



Product Collection

Innovative Eco-Friendly Plating & Packaging

VerTerra Product Catalog

VerTerra is a leading brand in the eco-friendly dinnerware industry. Since 2006, we have been providing sustainable alternatives to traditional disposable tableware. Our product range is made from natural, biodegradable materials, making them an ideal choice for those looking to reduce their impact on the environment. Our products not only look beautiful, but they are also practical and cost-effective, providing operational efficiency and reducing labor costs. With a commitment to sustainability, VerTerra has become the go-to choice for leaders and innovators in the industry.



sku 01-22-05B, 01-01-10B, 01-22-10D, 01-22-15B, VT-2417

Contents

4-5

About Us

- 4 About Us
- 5 Social & Global Responsibility

6-15

Palm Collection

- 7 Why Palm?
- 8 Our Process
- 10 Palm Plates
- 11 Palm Trays
- 13 Palm Bowls
- 15 Palm with Lids & Clamshells

16-19

To-Go

- 17 Paperboard Bento Boxes
- 18 Kraft Paper Boats
- 19 Hot/Cold Paper Cups & Lids
- 22 Collapsible Boxes
- 23 Vento (Bento) Boxes

20-35

Trays + Boards

- 25 Fixed Side Trays
- 26 Collapsible Trays
- 29 Covered Smallware Trays
- 29 Covered Catering Trays
- 32 Solid Wood Trays & Bowls
- 34 Chef Boards

36-41

Cutlery + Eco²

- 36 Cutlery
- 37 Cutlery Kits
- 39 Eco² Bamboo Paddles
- 40 Eco² Cones & Boats
- 41 Eco² Straws

42-51

Service + Support

- 42 Personalization Options
- 44 Customer Commitment
- 46-51 F&B Concepts



FOLLOW US

Follow us to stay up to date on the latest trends and uses for VerTerra Dinnerware. Want to be featured next year? Tag us on Facebook, Instagram, LinkedIn, and TikTok.



@verterra



@verterradinnerware



@verterradinnerware



@verterra_official

QUESTIONS?

212-760-1200
INFO@VERTERRA.COM

WHOLESALE/DISTRIBUTOR INQUIRY?

SALES@VERTERRA.COM

OFFICIAL HOUSE
PURVEYOR TO THE JAMES
BEARD FOUNDATION



OFFICIAL PALM LEAF
PLATE OF THE
INTERNATIONAL
CATERERS
ASSOCIATION



OFFICIAL COMPOSTABLE
OF NACE - NATIONAL
ASSOCIATION FOR
CATERING AND EVENTS



About Us

VerTerra Dinnerware has earned its reputation as the leader in sustainable dining plateware, serveware, and food packaging. Since our inception in 2006, we've been driven by a mission to revolutionize the single-use food packaging industry, replacing environmentally damaging materials with our innovative, eco-friendly alternatives. Our signature product launching in 2007 – The Palm Leaf Plate: Dinnerware from Fallen Leaves® – symbolizes this commitment.

Our entire range of products, from plates to cups, trays, boxes, utensils, and more, is crafted from 100% renewable resources like fallen palm leaves, balsa wood tree trunks, bamboo, and sugarcane. This commitment to sustainability has not only earned us USDA Bio-Preferred and BPI-certified compostable credentials, but also the trust and loyalty of businesses in the F&B industry.

★
Int'l Hotel Motel Show
**BEST NEW
PRODUCT**

★
NY Restaurant Show
**PEOPLE'S
CHOICE**

★
Ihmrs
**BEST NEW
PRODUCT - TABLETOP**

★
Planet Edible
**SUSTAINABILITY
AWARD**

★
Edible Magazine
**SUSTAINABILITY
AWARD**

★
National Products Expo East
**BEST NEW
PRODUCT**

GLOBAL & SOCIAL RESPONSIBILITY

VerTerra's commitment extends beyond products, directly impacting global communities and the environment.

Over the span of 17 years, VerTerra has focused on employing women in its factories, fostering economic opportunities for over 10,000 women in rural India and Indonesia.

We've successfully prevented the production of over 50 million pounds of plastic.

We've proudly produced over 8 billion palm plates, a quantity so vast that it could stretch from Earth to the moon and back.

VerTerra champions carbon footprint reduction through zero-waste manufacturing, recycling production water, and turning leaf scraps into nutrient-rich compost.

SUSTAINABLE CERTIFICATIONS



BPI Compostable: The Biodegradable Products Institute Certification program is a third-party verification of ASTM standards for compostable products in North America.



USDA: The U.S. Department of Agriculture Certified Biobased Product assures a consumer that the product contains a USDA-verified amount of renewable biological ingredients.



CMA: Compost Manufacturing Alliance is a global leader in providing industrial composting facilities an acceptance standard for compostables by performing field disintegration testing. VerTerra Palm products have been shown to completely decompose in 60 days or less.

"It is with pleasure that I share the The James Beard Foundation enjoys and appreciates using VerTerra at our events, and our chefs do as well. The line of plates and bowls are the perfect sizes for your special events whether they are seated dinners or walk about receptions. They are not only beautiful, and very photogenic, but sturdy as well."

Shelley Menaged, Special Events Coordinator
THE JAMES BEARD FOUNDATION



sku 01-22-15B

Why Palm?

DINNERWARE FROM FALLEN LEAVES®

Our signature product launched in 2007 - The Palm Leaf Plate: Dinnerware from Fallen Leaves® began the eco-friendly trend. VerTerra is the award-winning, leader in palm dinnerware production and the only integrated manufacturer of palm leaf plates. We own our factories which affords us the ability to produce the highest standard. Our palm leaf products are created solely from unused palm leaves and water. Our Dinnerware is all natural and is made without any added chemicals. Our designs are recognized by the Cooper Hewitt Design Museum - elegant but durable - our products are microwave and oven safe and can handle hot or cold food, liquids, and oils.

Pat. and Pat. Pending: www.verterra.com/pages/patent

SUSTAINABLE

Our dinnerware is made from palm leaves (that would otherwise be burned), steam, heat and pressure. No plants or trees are cut or harmed in the process.

BIODEGRADABLE

Our dinnerware will naturally break down at home or in an industrial compost.

CERTIFIED COMPOSTABLE

VerTerra products are BPI-certified compostable and tests have shown that soil containing VerTerra compost enhances plant growth by over 15%.

DURABLE + VERSATILE

Our products can with stand food that is hot, cold, wet, or dry. They are naturally water and oil resistant. VerTerra dinnerware will not leak, soften or impart taste.

MICROWAVE + OVEN SAFE

VerTerra dinnerware can withstand two minutes in the microwave on a high heat setting or up to 45 minutes in the oven at 350 ° F as long as they are 6" from the heat source.



sku 01-01-753



sku 01-27-136

Our Process

DINNERWARE FROM FALLEN LEAVES®

BORROWED FROM THE EARTH AND RETURNED

VerTerra palm dinnerware is made in our network of factories in India, where employees work in a safe environment, receive fair wages, and access to health care. The production process is simple and transparent: after collecting fallen leaves that would normally be burned, we apply steam, heat and pressure to transform the leaves into dinnerware that will compost naturally in two months.

Our priority is to be true to the Earth. We are always developing new ways to make the entire process - from gathering materials, to delivering our palm leaf dinnerware to your party - more Eco-friendly.

The first step in making our leaf dinnerware is to collect fallen leaves from plantations. Trees are not cut down during this process. The leaves are then brought into the factory, where they are sprayed with high-pressure water, steamed and UV-sterilized. As a creation of only two products, palm leaves and water, our palm leaf dinnerware is completely non-toxic and chemical free. Our dinnerware can withstand up to 2 minutes in the microwave on a high heat setting or up to 45 minutes in the oven at 350° F, as long as they are at least 6" from the heat source. Over 80% of the water used in this process is recaptured and reused. In fact, the whole manufacturing processes only requires 10% of the energy used in recycling. No chemicals, lacquers, glues, bonding agents, or other toxins are added to our compostable products, which keeps your meal and our Earth free from harm.

Pat. and Pat. Pending: www.verterra.com/pages/patent



sku 01-03-5DR



sku 07-75-05C



01

Gather Leaves

Fallen Palm leaves are collected and brought to our factories in India.

02

Steam & Press

The leaves are then steamed + sterilized then they are pressed into shape.

03

Heat

The palm leaves are then heated to finish the product. They will now retain their shape.

04

Use & Enjoy

The products are ready to display culinary creations + inspire new uses.

05

Compost

The Products are BPI Certified compostable in an industrial facility or can be composted at home.

06

Back to the Earth

Soil containing VerTerra compost enhances plant growth by 15%.

WHY YOU'LL LOVE DINNERWARE FROM FALLEN LEAVES®

All-natural product made from only palm leaves, steam, heat and pressure

Palm leaves would otherwise be burned as waste

Certified compostable in fewer than 60 days in an industrial facility

No heat transference

BPI-certified 100% compostable



Palm leaf becoming VerTerra Dinnerware



sku 01-00-401, 01-22-6x9D, 01-03-182, 01-01-322



sku 0-0-40b

Palm Plates

DINNERWARE FROM FALLEN LEAVES®

Our wide range of dinnerware is the solution to matching your sustainability goals with your business practices. Pat. and Pat. Pending: www.verterra.com/pages/patent



7" ROUND PLATE
sku 01-01-20B
Qty: 300
sku 01-01-20H
Qty: 100

8" ROUND PLATE
sku 01-01-22B
Qty: 300

9" ROUND PLATE
sku 01-01-24B
Qty: 300

10" ROUND PLATE
sku 01-01-25B
Qty: 300
sku 01-01-25H
Qty: 100

10" DEEP ROUND PLATE
sku 01-00-30D
Qty: 300



12" ROUND SHALLOW PLATE
sku 01-01-30H
Qty: 100

6" ROUND LIP PLATE
sku 01-33-15B
Qty: 300
sku 01-33-15H
Qty: 100

9" ROUND LIP PLATE
sku 01-33-25B
Qty: 300

4"x 4" PLATE
sku 01-22-10B
Qty: 600

4"x 4" DEEP PLATE
sku 01-22-10D
Qty: 600
sku 01-22-10DH
Qty: 100

5"x 5" PLATE
sku 01-22-13B
Qty: 300
sku 01-22-13H
Qty: 100



6"x 6" PLATE
sku 01-22-15B
Qty: 300

7"x 7" PLATE
sku 01-00-16B
Qty: 300

7"x 8.5" PLATE
sku 01-22-22B
Qty: 300

8"x 8" PLATE
sku 01-20-20B
Qty: 300

9"x 9" PLATE
sku 01-20-25B
Qty: 300



9"x 9" TWO COMPARTMENT PLATE
sku 02-25-02C
Qty: 300

9" x 9" THREE COMPARTMENT PLATE
sku 02-25-03C
Qty: 250

9" x 9" FOUR COMPARTMENT PLATE
sku 02-25-04C
Qty: 300

9" x 9" FIVE COMPARTMENT PLATE
sku 02-25-05C
Qty: 300

10"x 10" PLATE
sku 01-20-25C
Qty: 300

Palm Trays

DINNERWARE FROM FALLEN LEAVES®



2"x 4" MINI TRAY
sku 01-22-05B
Qty: 600

4"x 10" TRAY
sku 01-22-18B
Qty: 300

4.5"x 6" TRAY
sku 01-22-12B
Qty: 300

6"x 9" DEEP TRAY
sku 01-22-6X9D
Qty: 300

8" x 12" TRAY
sku 01-22-8X12
Qty: 200



10"x 14.5" TRAY
sku 01-00-35T
Qty: 50

10"x 15.5" TRAY
sku 01-00-40T
Qty: 50

12"x 22" OVAL TRAY
sku 01-20-12X22
Qty: 50



sku 01-00-35T, plate 01-22-18B, cutlery kit V1-24H



bowl sku 01-00-13B | plate sku 01-00-24B

Bowls

DINNERWARE FROM FALLEN LEAVES®



The possibilities are endless with our range of bowls. The smaller sizes are the industry standard for tastings. The larger sizes elegantly display main dishes, entrées, salads, and more! Our dinnerware is designed to be able to handle hot and cold food, liquids, and oils.

Pat. and Pat. Pending: www.verterra.com/pages/patent



3"x 3" BOWL
(1.5oz)
sku 01-01-11B
Qty: 600



5"x 5" BOWL
(12oz)
sku 01-00-18B
Qty: 300



6"x 6" BOWL
(12oz)
sku 01-00-13B
Qty: 300



6"x 8" BOWL (12oz)
sku 01-00-15B
Qty: 300
sku 01-00-15H
Qty: 100



8"x 8" BOWL (16oz)
sku 01-00-20B
Qty: 300



2.5" ROUND BOWL (2oz)
sku 01-01-02B
Qty: 600



3.5" ROUND BOWL (4oz)
sku 01-01-10B
Qty: 600



5" ROUND DEEP BOWL (10oz)
sku 01-00-5DR
Qty: 300



8" ROUND SALAD BOWL (22oz)
sku 01-00-22B
Qty: 200



6.5" DEEP PYRAMID BOWL (16oz)
sku 02-22-6PY
Qty: 300



6"x 11" TWO COMPARTMENT BOWL (12oz/6oz)
sku 01-00-13P
Qty: 200



sku 01-01-10B



sku 01-01-10B



sku VT-BX-750

Palm With Lids



PALM BOWL & LID COMBO

Our Palm Leaf To-Go Container is the perfect way for customers to pack, serve and eat all in one. This combo is fully compostable and an elegant addition to our line of palm products. Microwave and oven safe, stackable and perfect for meal delivery and drop off.



4.75" x 6.75" BOWL COMBO (17oz)
sku VT-BX-500
Qty: 200



8.4" x 6.6" BOWL COMBO (26oz)
sku VT-BX-750
Qty: 200



9" x 5.5" BOWL COMBO (32oz)
sku VT-BX-1000
Qty: 125

RIM LOCK CLAMSHELLS / Lids measure 4" in height

Our patent-pending Rim-Lock lid system transforms our palm plate into a secure, mobile food container. The design cleverly locks the plate under the rim once closed, ensuring food remains stationary and safe during transportation. Our Rim-Lock Clamshells are crafted from eco-friendly, recyclable PET material.



6" RIM LOCK CLAMSHELL*
sku VT-LD-6X6PT
Qty: 150
*6" palm plate sold separately



8" RIM LOCK CLAMSHELL*
sku VT-LD-8X8PT
Qty: 150
*8" palm plate sold separately



9" RIM LOCK CLAMSHELL*
sku VT-LD-9X9PT
Qty: 150
*9" palm plate sold separately



sku VT-LD-9X9PT, plate 01-20, 263, bowl 01-01-15



sku VT-LD-8X8PT, knife+fork VT-CE-FK3



sku VT-PB-9X7-3C
sku VT-PBW-7X7-4C
fork sku VT-E2-MF
knife sku VT-E2-MK

Paper Board To-Go



VerTerra's amazing patent pending hybrid marries the elegant features of our wooden boxes with the economical savings of Paper Board. True separation means the foods in the compartments will not mix, 2 lid & 2 front locks providing a tamper evident seal. And our patented reflexive / fold back lid is built in for a clean table presentation.

Pat. and Pat. Pending: www.verterra.com/pages/patent

BENTO BOXES



9"x 7"x 2" 3 COMPARTMENT
BENTO BOX
sku VT-PB-9X7-3C
Qty: 200



11"x 9"x 2" 3 COMPARTMENT
BENTO BOX
sku VT-PB-11X9-3C
Qty: 150



10"x 10"x 2" 3 COMPARTMENT
BENTO BOX
sku VT-PB-10X10-3C
Qty: 120



7"x 7"x 2" 4 COMPARTMENT
BENTO BOX/WINDOW LID
sku VT-PBW-7X7-4C
Qty: 200



9"x 7"x 2" 3 COMPARTMENT
BENTO BOX/WINDOW LID
sku VT-PBW-9X7-3C
Qty: 200



9"x 9"x 2" 4 COMPARTMENT
BENTO BOX/WINDOW LID
sku VT-PBW-9X9-4C
Qty: 100

KRAFT BOXES WITH LIDS / Lids measure 1" in

Certified compostable bases paired with recycled PET lids, these eco-friendly boxes are perfect for wraps, single-serving burgers, and foot-long hot dogs. Measuring 2" when assembled, they're stackable and feature a snap-in-place locking design to keep the lid securely in place.



6"x 5"x 1" KRAFT BOX
sku VT-PBL-6X5X1
Qty: 200



8.75"x 3.5"x 1" KRAFT BOX
sku VT-PBL-8.75X3.5X1
Qty: 200



8"x 4"x 1" KRAFT BOX
sku VT-PBL-8X4X1
Qty: 200



12"x 3"x 1" KRAFT BOX
sku VT-PBL-12X3X1
Qty: 200



COMPOSTABLE BOATS



COMPOSTABLE BOAT (1/2LB)
sku VT-KFT-1/2
Qty: 1000

COMPOSTABLE BOAT (1LB)
sku VT-KFT-001
Qty: 1000

COMPOSTABLE BOAT (2LB)
sku VT-KFT-002
Qty: 1000

COMPOSTABLE BOAT (3LB)
sku VT-KFT-003
Qty: 500

COMPOSTABLE BOAT (4LB)
sku VT-KFT-004
Qty: 500

COMPOSTABLE BOAT (5LB)
sku VT-KFT-005
Qty: 500

Compostable Cups

Discover the environmental and functional benefits of Verterra's compostable paper cups and lids, a versatile solution for all your beverage needs. Able to hold both hot and cold liquids, these cups are available in sleek black and classic white (black not shown).

PAPER CUPS / lids sold separately

Available in white and black (black not shown)



COMPOSTABLE CUP (4oz)
sku VT-HTCUP-04W (white)
Qty: 1000
sku VT-HTCUP-04B (black)
Qty: 1000



COMPOSTABLE CUP (8oz)
sku VT-HTCUP-08W (white)
Qty: 1000
sku VT-HTCUP-08B (black)
Qty: 1000



COMPOSTABLE CUP (12oz)
sku VT-HTCUP-12W (white)
Qty: 1000
sku VT-HTCUP-12B (black)
Qty: 1000



COMPOSTABLE CUP (16oz)
sku VT-HTCUP-16W (white)
Qty: 1000
sku VT-HTCUP-16B (black)
Qty: 1000

LIDS

PAPER



CPLA



COMPOSTABLE PAPER LID
(fits 8oz cup)
sku VT-HTCUP-08W-LIDPW (white)
Qty: 1000

COMPOSTABLE PAPER LID
(fits 12, 16, 20oz cup)
sku VT-HTCUP-LIDPW (white)
Qty: 1000

COMPOSTABLE CPLA LID
(fits 4oz cup)
sku VT-HTCUP-04W-LIDCW (white)
Qty: 2000
sku VT-HTCUP-04-LIDCB (black)
Qty: 2000

COMPOSTABLE CPLA LID
(fits 8oz cup)
sku VT-HTCUP-08W-LIDCW (white)
Qty: 1000

COMPOSTABLE CPLA LID
(fits 12, 16, 20oz cup)
sku VT-HTCUP-LIDCW (white)
Qty: 1000
sku VT-HTCUP-LIDCB (black)
Qty: 1000

KRAFT PAPER FRY CUPS



COMPOSTABLE FRY CUP (8oz)
sku VT-PPR-FRY-08
Qty: 250



COMPOSTABLE FRY CUP (12oz)
sku VT-PPR-FRY-12
Qty: 250



COMPOSTABLE FRY CUP (16oz)
sku VT-PPR-FRY-16
Qty: 250



sku WB-CB-8xl

Pat. and Pat. Pending: www.verterra.com/pages/patent

Collapsible Boxes



Our sleek and modern to-go-boxes are a line of eco-friendly food containers that enhance any food service experience. The collapsible boxes have an attached "flip-back" lid which means they store completely flat and pop-open instantly saving 95% of storage space. Made from balsa wood and rice paper, these boxes are sturdy, strong, stackable, oil resistant, water resistant, lightweight and biodegradable. Available in a wide range of sizes.

Pat. and Pat. Pending: www.verterra.com/pages/patent

READY IN SECONDS! SIMPLY UNFOLD TO LOCK IN PLACE

The collapsible boxes store flat and pop open in three easy steps. Step 1 - lift the lid, Step 2 - gently pull interior sides up, Step 3 - snap into place and you're done.



VerTerra Product Catalog

Info@VerTerra.com | 212.760.1200 | **verterra** 21



sku WB-BB-6X6



sku WB-BB-6X8

COLLAPSIBLE BOXES



4"x 6"x 2" **SMALL BOX**
sku TG-CB-4X6
Qty: 300



4"x 6"x 2" **SMALL BOX W/ WINDOW LID**
sku WB-CB-4X6
Qty: 300



6"x 6"x 1" **SMALL BOX**
sku TG-CB-6X6
Qty: 300



7"x 7"x 3" **MEDIUM BOX**
sku TG-CB-7X7H
Qty: 100



6"x 8"x 3" **MEDIUM BOX W/ WINDOW LID**
sku WB-CB-6X8H
Qty: 100



6"x 8"x 3" **MEDIUM BOX W/ WINDOW LID**
sku WB-CB-6X8
Qty: 50



8"x 11"x 3" **LARGE BOX**
sku TG-CB-8X1
Qty: 100



8"x 11"x 3" **LARGE BOX W/ WINDOW LID**
sku WB-CB-8X1
Qty: 50



8"x 11"x 2" **LARGE BOX**
sku TG-CB-1X8
Qty: 100



11"x 15"x 2" **X-LARGE BOX**
sku TG-CB-1X5H
Qty: 50



11"x 15"x 3" **X-LARGE BOX**
sku TG-CB-5X1H
Qty: 50

VENTO™ (VARIABLE BENTO) COLLAPSIBLE BOXES



A new dimension to the patented collapsible box, the Vento Collapsible boxes include changeable bento inserts. Click-in dividers create six different possibilities: single compartment or split 2, 3, 4, or 6 compartment box.



6"x 8"x 3" **MEDIUM BOX (3 Dividers)**
sku TG-BB-6X8
Qty: 50



6"x 8"x 3" **MEDIUM BOX W/ WINDOW LID (3 Dividers)**
sku WB-BB-6X8
Qty: 50



8"x 11"x 3" **LARGE BOX (3 Dividers)**
sku TG-BB-8X1
Qty: 50



8"x 11"x 3" **LARGE BOX W/ WINDOW LID (3 Dividers)**
sku WB-BB-8X1
Qty: 50

CLICK N LOCK

The Click N Lock features two-piece double-walled boxes, offering exceptional durability, stackability, and leak resistance—perfect for saucy foods.



3"x4"x2" **PETITE TO-GO-BOX**
sku TG-LB-3X4
Qty: 300



7"x9"x3" **MEDIUM TO-GO-BOX**
sku TG-LB-7X9H
Qty: 50



sku TG-CB-8X1



sku TG-CB-1X5 / TG-CB-1X1



Pat. and Pat. Pending: www.verterra.com/pages/patent

Smallware & Serveware



Discover our unique smallware and serveware tray collection. Made from surplus balsa wood and rice paper, these lightweight, space-saving trays are 100% certified compostable. Our collapsible trays ship flat and assemble in seconds. The minimalist smallware is great for dips, snacks, and small portions. While our versatile serveware is ideal for events, drop-off catering and dinner parties.

FIXED SIDED TRAYS



2"x 3" MINI TRAY
sku TG-DE-2X3
Qty: 300



3"x 8" SMALL TRAY
sku TG-DE-3X8
Qty: 300



3"x8" BOAT
sku TG-HD-3X8
Qty: 300



5"x 5" SQUARE
sku TG-SE-5X5
Qty: 300



5"x 7" MEDIUM RECTANGLE
sku TG-DE-5X7
Qty: 300



7"x 7" SQUARE
sku TG-DE-7X7
Qty: 300



7"x 7" x 4" MEDIUM TRAY CROSS DIAGONAL PARTITION
sku TG-DE-07D
Qty: 50



11"x 15"x 1.25" FIXED SIDED LARGE TRAY
sku TG-DE-1X5
Qty: 100



12"x 12"x 1" FIXED SIDED TRAY
sku TG-DE-12S
Qty: 100



12"x 12"x 4" LARGE TRAY CROSS DIAGONAL PARTITION
sku TG-DE-12DH
Qty: 25

COLLAPSIBLE TRAYS



6"x 6" SMALL SQUARE TRAY
sku TG-CS-6X6
Qty: 300



11"x 15"x 2" LARGE COLLAPSIBLE TRAY
sku TG-CS-1X5
Qty: 100



11"x 15"x 3" DEEP LARGE COLLAPSIBLE TRAY
sku TG-CS-5X1
Qty: 100

REDEFINING DROP-OFF CATERING.



sku TG-CT-4X4
sku TG-LB-3X7
sku TG-3X4-3



sku TG-CT-5.6x5.6

Grab & Go



VerTerra's classic to-go boxes use an eco-friendly balsa wood base. Coupled with a recycled and recyclable PET lid featuring an innovative patent-pending closure that securely locks for safety and stacking. These durable and stylish serving pieces are ideal for all your drop-off and delivery needs.

COVERED SMALLWARE TRAYS / base and lids ship as a combo pack

Lids measure 1" in height unless specified



4.6"x 4.6" TRAY
sku TG-CT-4.6X4.6
Qty: 100



5.6"x 5.6" TRAY
sku TG-CT-5.6X5.6
Qty: 100



6"x8"x1" TRAY
sku TG-CT-6X8X1
Qty: 100



6"x8"x2" TRAY
sku TG-CT-6X8S
Qty: 100



6"x8"x3" DEEP TRAY
sku TG-CT-6X8D
Qty: 100



9.8"x 3" TRAY*
sku TG-CT-9.8X3
Qty: 100
*Lids measure 1.5" in height



11.8"x 2.6" TRAY*
sku TG-CT-11.8X2.6
Qty: 100
*Lids measure 1.5" in height



7"x2" TRAY
sku TG-CT-7X2
Qty: 100



7.7"x3" TRAY*
sku TG-CT-7.7X3
Qty: 100
*Lids measure 1.5" in height



7"x 5" TRAY
sku TG-CT-7X5
Qty: 100



7"x 7" TRAY
sku TG-CT-7X7
Qty: 100



sku TG-CT-8X10D



sku TG-CT-7.7X3, bowl sku 01-01-10



Covered Trays

Experience the unmatched convenience and functionality of Verterra Covered Catering Trays, designed with a sturdy locking lid for easy handling and capable of accommodating a variety of foods such as sandwiches and salads, making them an ideal, versatile solution for all your serving occasions.

COVERED CATERING TRAYS / base and lids ship as a combo pack

Lids measure 1" in height unless specified



8"x 11"x 1" SHALLOW TRAY
sku TG-CT-8XIX1
Qty: 50



8"x 11"x 2" TRAY
sku TG-CT-8XIX2
Qty: 50



8"x 11"x 3.5" DEEP TRAY
sku TG-CT-8XIID
Qty: 50



11"x 15"x 1" TRAY
sku TG-CT-11XI51
Qty: 50



11.8"x 15"x 3" TRAY
sku TG-CT-11XI5
Qty: 50



12"x 12" TRAY*
sku TG-CT-12XI2
Qty: 25
*Lids measure 3.5" in height



14"x 14" TRAY*
sku TG-CT-14XI4
Qty: 25
*Lids measure 3.5" in height



16"x 16" TRAY LID*
sku TG-LD-16XI6
Qty: 25
*Lids measure 3.5" in height

16"x 16" TRAY
sku TG-CT-16XI6
Qty: 25



Solid Wood Trays & Bowls

VerTerra offers an array of solid wood trays and bowls that are designed with a paper liner, ensuring an elegant yet practical solution for serving. The trays and bowls are not just aesthetically pleasing making them a great choice for professional caterers or home entertaining.

SOLID WOOD TRAYS - PAPER LINED / paper liner included (not shown)



10"x 10" SOLID WOOD TRAY
sku VT-WUD-10X10
Qty: 10

12"x 12" SOLID WOOD TRAY
sku VT-WUD-12X12
Qty: 10

14"x 14" SOLID WOOD TRAY
sku VT-WUD-14X14
Qty: 10

16"x 16" SOLID WOOD TRAY
sku VT-WUD-16X16
Qty: 10

18"x 18" SOLID WOOD TRAY
sku VT-WUD-18X18
Qty: 10



12"x 16" SOLID WOOD TRAY
sku VT-WUD-12X16
Qty: 10



12"x 18" SOLID WOOD TRAY
sku VT-WUD-12X18X1
Qty: 10



12"x 21" SOLID WOOD TRAY
sku VT-WUD-12X21X1
Qty: 10



14"x 21" SOLID WOOD TRAY
sku VT-WUD-14X21X1
Qty: 10

ANGLED SOLID WOOD TRAYS - NOT SHOWN / paper liner included

8"x 11" ANGELED SOLID WOOD TRAY
sku VT-WUD-8x11-ANG
Qty: 10

12"x 12" ANGELED SOLID WOOD TRAY
sku VT-WUD-12x12-ANG
Qty: 10

14"x 14" ANGELED SOLID WOOD TRAY
sku VT-WUD-14X14-ANG
Qty: 10

16"x 16" ANGELED SOLID WOOD TRAY
sku VT-WUD-16X16-ANG
Qty: 10

11"x 15" ANGELED SOLID WOOD TRAY
sku VT-WUD-11X15-ANG
Qty: 10

SOLID WOOD BOWLS



6"x 6"x 3" SOLID WOOD BOWL
sku VT-WUD-6X6X3
Qty: 10



12"x 12"x 3" SOLID WOOD BOWL
sku VT-WUD-12X12X3
Qty: 10



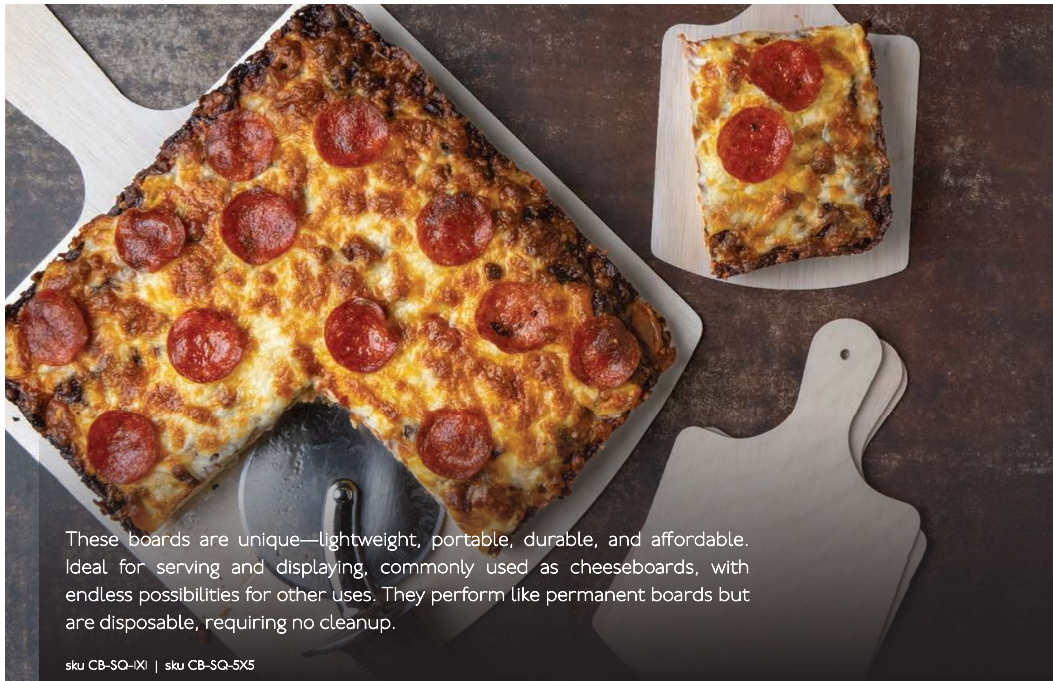
14"x 14"x 3" SOLID WOOD BOWL
sku VT-WUD-14X14X3
Qty: 10



sku VT-WUD-16x16

Chef Boards

CHEESE • CHARCUTERIE • SANDWICHES • PIZZA • SUSHI



These boards are unique—lightweight, portable, durable, and affordable. Ideal for serving and displaying, commonly used as cheeseboards, with endless possibilities for other uses. They perform like permanent boards but are disposable, requiring no cleanup.

sku CB-SQ-IXI | sku CB-SQ-5X5



sku CB-RC-8X2, CB-RC-2X4
bowl 01-01-11B, fork sku VT-2408



5"x 5" BOARD
PERSONAL BOARD
sku CB-SQ-5X5
Qty: 200



8"x 8" BOARD
2-4 PERSON BOARD
sku CB-SQ-8X8
Qty: 100



11"x 11" BOARD
5-10 PERSON BOARD
sku CB-SQ-IXI
Qty: 50



2"x 4" BOARD
COCKTAIL & TASTING BOARD
sku CB-RC-2X4
Qty: 200



5"x 10" BOARD
2-4 PERSON BOARD
sku CB-RC-5XI
Qty: 100



8"x 12" BOARD
5-10 PERSON BOARD
sku CB-RC-8X2
Qty: 100

Wooden Cutlery

* No wood taste



HEAVY WEIGHT



7" WOODEN
SPOON
sku VT-2418
Qty: 1000

7" WOODEN
FORK
sku VT-2420
Qty: 1000

7" WOODEN
KNIFE
sku VT-2419
Qty: 1000

MEDIUM WEIGHT



7" WOODEN
SPOON
sku VT-E2-MS
Qty: 1000

7" WOODEN
FORK
sku VT-E2-MF
Qty: 1000

7" WOODEN
KNIFE
sku VT-E2-MK
Qty: 1000

LIGHT WEIGHT



6" WOODEN
SPOON
sku VT-E2-I3
Qty: 1000

6" WOODEN
FORK
sku VT-E2-I1
Qty: 1000

6" WOODEN
KNIFE
sku VT-E2-I2
Qty: 1000

TASTING



4" WOODEN
TASTING SPOON
sku VT-2406
Qty: 2500

4" WOODEN
TASTING SPOON
sku VT-2407
Qty: 2500

5.5" TWO-PRONGED
TASTING FORK
sku VT-2408
Qty: 10,000

Cutlery Kits

* No wood taste



HEAVY WEIGHT CUTLERY KIT



7" CUTLERY KIT
sku VT-2417
Qty: 300

MEDIUM WEIGHT CUTLERY KIT



7" CUTLERY KIT
sku VT-E2-MC
Qty: 400

LIGHT WEIGHT CUTLERY KIT



7" CUTLERY KIT
sku VT-E2-LC
Qty: 400

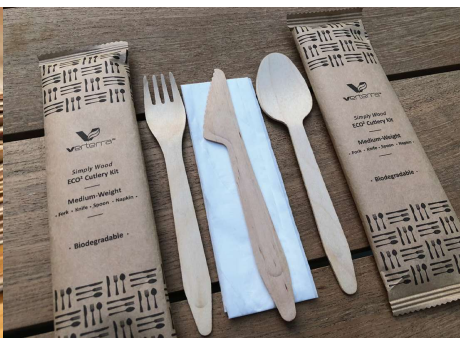
CLICK N EAT



7" WOODEN CLICK N EAT
sku VT-CE-FK3
Qty: 300



sku V-2420, V1-2419



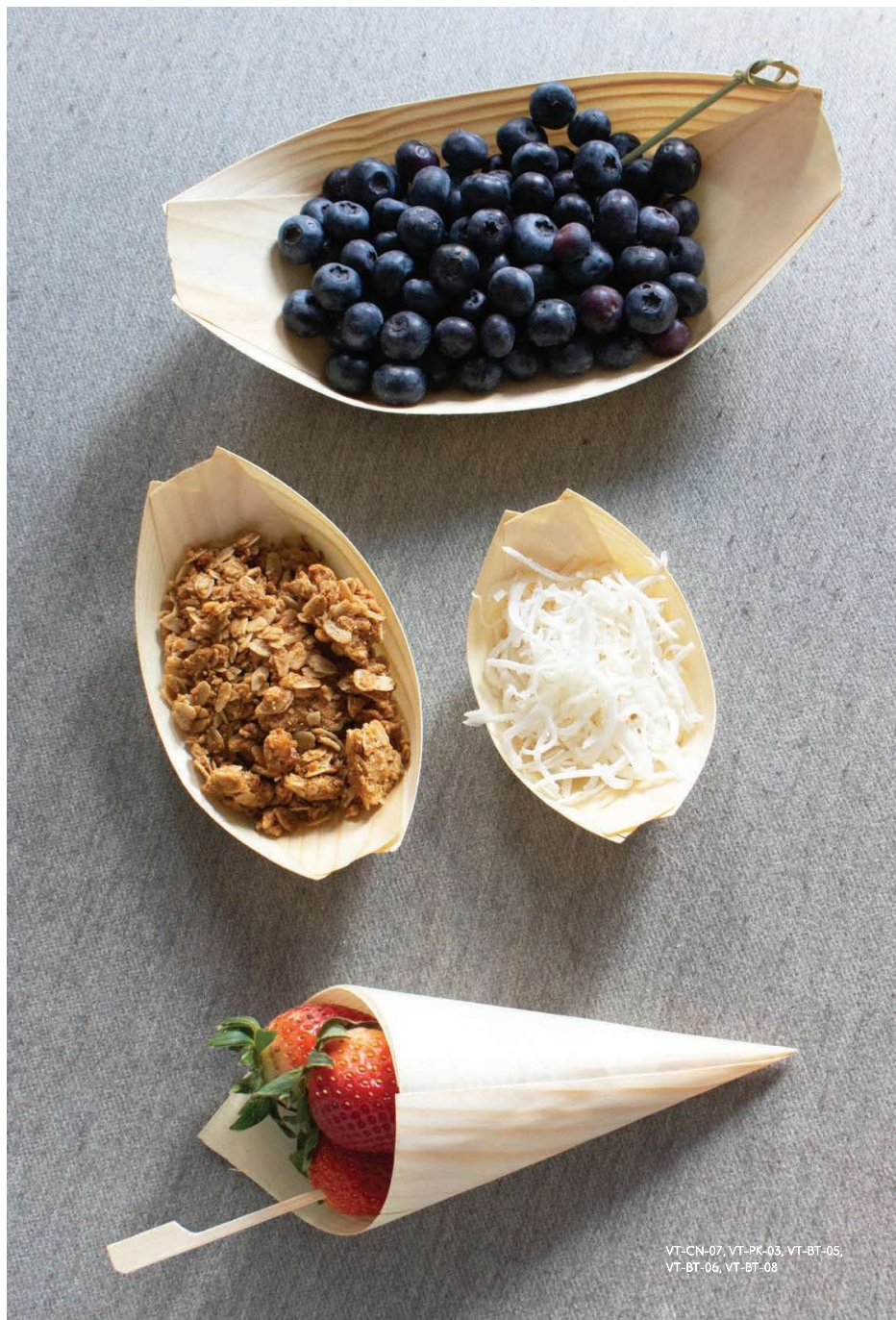
sku V1-E2-VC



sku V1-2426



sku 1G-CB-8X, small box sku 1C-LB-5X4



VT-CN-02, VT-PK-03, VT-BT-05,
VT-BT-06, VT-BT-08

Eco² Economically Eco-Friendly™



We proudly offer an eco-friendly product line that strikes a balance between affordability and style. Although these products may not be as durable as our premium line, they offer a cost-effective option for those who still want to prioritize sustainability.

Pat. and Pat. Pending: www.verterra.com/pages/patent

ECO²™ BAMBOO PADDLES

A simple accessory for your culinary creations, our bamboo paddles are perfect for appetizers to kabobs, a great alternative when a fork isn't needed.

| | | | | | |
|---|---|---|---|---|---|
|  |  |  |  |  |  |
| 3.5" BAMBOO PADDLE PICK sku VT-PK-03 Qty:5000 | 4" BAMBOO PADDLE PICK sku VT-PK-04 Qty:5000 | 6" BAMBOO PADDLE PICK sku VT-PK-06 Qty:5000 | 7" BAMBOO PADDLE PICK sku VT-PK-07 Qty:2500 | 8" BAMBOO PADDLE PICK sku VT-PK-08 Qty:2500 | 10" BAMBOO PADDLE PICK SIDE sku VT-PK-10S Qty:2500 |



sku VT-PK-06

sku VT-PK-04

Eco² Economically Eco-Friendly™



Our versatile range of cones and boats are the go-to choice for events and outdoor festivities. With their unbeatable affordability, these cost-effective solutions effectively offer an eye-catching visual presentation, all while remaining budget-friendly.

ECO²™ WOODEN CONES



3" CONE
sku VT-CN-03
Qty: 1000

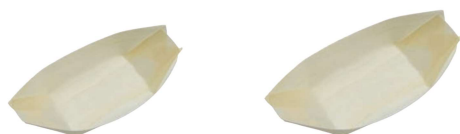
5" CONE
sku VT-CN-05
Qty: 1000

8" CONE
sku VT-CN-08
Qty: 1000



sku VT-CN-08

ECO²™ WOODEN BOATS



5" WOODEN BOAT
sku VT-BT-05
Qty: 1000

6" WOODEN BOAT
sku VT-BT-06
Qty: 1000



8" WOODEN BOAT
sku VT-BT-08
Qty: 1000



sku VT-CN-05



sku VT-BT-06

Pat. and Pat. Pending: www.verterra.com/pages/patent

Eco² Economically Eco-Friendly™



Our Stable Straws are all natural drinking straws that are 100% biodegradable and plastic free. Enjoy a guilt free, anti-soggy drinking straw that is restaurant quality, eco-friendly, free of dyes, gluten free, and toxin free, all while having no taste or odor.

STABLE STRAWS

5" HAY STRAW
sku STR-05
Qty: 2000

8" HAY STRAW
sku STR-08
Qty: 2000



sku VT-STR-05, VT-STR-08



sku STR-05

Personalization

From elevating your brand with personalized logos on our products to Custom Packaging Full-Service Solutions, we provide a comprehensive suite of services designed to enhance and align with your brand identity while standing out in the market with an eco-friendly product line.



OPTION 1. STANDARD PERSONALIZATION SERVICE

Make your brand stand out with our Standard Customization Service, where we seamlessly incorporate your logo into our existing products. We ensure your branding is distinct and memorable when you add a personal touch like your logo on our Palm, Balsa, or Utensils.

Dinnerware from Fallen Leaves®: Palm Collection

The maximum size for the logo is 7"x4" (center only), while the smallest is 1"x1" on the corner of a 6" plate.

Balsa Wood

We also offer logo placements on the top or front panels of Balsa collapsible boxes and for the Wood Trays, either on the inside or outside.

Cutlery

Add your logo on the handle of the utensils or printed on the outside of the bag of your chosen Cutlery Kit.

Paperboard

Add full color prints, custom text or codes printed inside or out on this versatile product.

Estimated fulfillment timeline is approximately 60-90 days.

OPTION 2. SEMI-CUSTOM PERSONALIZATION SERVICE

Our Semi-Custom Service offers the flexibility of adding branded elements to our existing products. Choose your product, send us your artwork, and we'll create a personalized piece that aligns with your brand identity.

- Adding items such as Cheese Paper, Belly Bands, Insert Pieces, and accessory kits in pre-production.
- Your products come packed with your customization and ready to use.
- The process is simple: pick an existing product, send us your artwork, we create a mock-up for approval.
- Contract agreement required.
- Estimated fulfillment timeline is approximately 60-90 days.

OPTION 3. CUSTOM PACKAGING FULL-SERVICE SOLUTION

For those seeking a truly unique sustainable, eco-friendly packaging solution, we offer a fully customizable service. From size requirements to performance criteria, we work closely with you to create a prototype that meets your vision, ensuring a tailor-made package that stands out against the competition.

- This involves a thorough discussion about your specific size requirements, usage, volume requirements, and performance criteria.
- After understanding your vision, we present a prototype for your review.
- Upon your sign off confirmation, we move into production.



Customer Commitment

At VerTerra, we're committed to supporting the industry in its quest for sustainable practices. We understand the critical role of affordable, environmentally friendly disposable and food packaging products. With our services and products, we aim to help you make the transition towards an eco-friendlier business model as seamless as possible. Our promise to our customers:

Multiple Communication Preferences: We are readily available for consultation and support via phone, email, in-person, or virtual meetings to answer all your queries promptly.

Customized Industry Pricing: Understanding that every business is unique, we offer customized industry pricing tailored to your specific needs.

Order Management: We work with you and your team to develop programs to streamline ordering and maintain stock levels, ensuring smooth operations and optimal inventory at all times.

Expertise: With almost two decades of experience, we provide counsel on disposable solutions for F&B businesses, leveraging our deep knowledge of the industry.

Distribution & Fulfillment: We have two warehouse locations; Los Angeles, CA, and NJ that enable us to offer coast-to-coast shipping and fast delivery, ensuring your orders reach you in a timely manner.

Custom Order Guides: To assist with your specific requirements, we also offer custom order guides for your team or your customers, making ordering easy and effectively for existing and new team members or customers.

At VerTerra, we're not just a service provider but a partner in your journey towards sustainability. We're here to support you every step of the way.



Industry Concepts

ECO-FRIENDLY PRODUCTS FIT FOR EVERY PURPOSE + INDUSTRY

VerTerra has a vast collection of products specifically designed to be multi-purpose. The wide variety allows our products to work seamlessly with a magnitude of industries across the food and beverage landscape. Between the palm leaf dinnerware, space saving collapsible boxes, chef boards, and serveware, VerTerra has a product for every need.

FAST CASUAL

Our product range fits the need of many QSR and Fast Casual Concepts. Our line of fast casual items are the solution for an affordable and aesthetically pleasing customer experience. Whether your focus is organic, locally sourced, farm to table or another innovative food concept, match your plating and packaging with your food all while driving home the message of sustainability to your



SPORTS SERVICE

Our Palm + Balsa products are great for stadiums, arenas, and racetracks. Our products are portable, lightweight, and durable. Perfect for concessions and catered services. Avoid clean up by using sustainable disposable that are eco-friendly and compostable for your sports service needs!



HOTELS

Create the perfect ambience in-room, poolside, at events, or as an amenity with our products. VerTerra is the answer to maintaining a high standard of guest experience with significantly lower cost. Our products perform and feel like permanent versions with the convenience of single-use: eliminate "slippage", breakage, loss, and keep your costs in line with your usage. In addition, save man power, prep/clean up, and storage all while maintaining your environmental goals.

OUTDOOR/POOLSIDE



sku 01-00-13P, 01-00-5B, TG-CS-5X



sku 02-25-03C, 01-00-40T, 01-22-5B

AMMENITIES



sku TG-DE-2x3, TG-DE-425, S'R-05



sku TG-DE-X5, 01-01-B

IN-ROOM DINING



sku TG-DE-5X/ CB-SO-5X5, TG-DE-07D, TG-DE-2x3



sku 01-22-05B, 01-22-03, 01-22-43B

IN-ROOM DINING



sku TG SE 5X5, CB S'2 6X8, TG DE 07D



sku TG DE IX5, TG DE 07D

POOL SIDE MEALS



sku TC DE 12D-H, TC CB IX5H



sku STR 05, STR 08

PICK UP PACKAGING



sku VT-PR-11x9-3C



sku VT-PR-750

SMALL AND MINI BUBBLE EVENTS



sku TG-RC-1x1



sku TG-RC-1x1

CATERING

VerTerra is the ultimate sustainable solution to catering. We offer products that are perfect for on and off premise. From buffets to a seated event or passed appetizers, you will love the lightweight durable products with lower staffing needs for service and cleanup. Your customers will love the modern appearance and will enjoy that the products are environmentally friendly.



sku 01-00-138, CB-SQ-8x7



sku TG-CS-1X5, TG-S-475



sku 0-20-258



sku CB-SQ-8x8



sku VT-7170, /T-7419, 01-00-183



sku TG-77-47D, TG-DF-07D



sku TG-C3-1X5F



sku TG-C3-6X6



sku AB-3B-6X8



sku TG-CT-4x16

SUSHI

Almost as if every product in our collection was designed to enhance the look of this delicious food the VerTerra line matches uniquely and perfectly to this cuisine.



sku TG-CB-6X8



sku WB-CB-6X8



sku TG-C3-8x1



sku TG-C1-4X2, G-C-4.6X4.6

TASTINGS

Our minis have become the tasting industry standard with over 500+ major events using our products, such as: Aspen F&W, Feast Portland, Palm Beach Food and Wine, and more. Our "small" the 2.5", 3", 3.5", 4", and 6" products make it easy for you to run a compostable event, lowering staffing needs, and the added bonus of gorgeous food images. Our smalls will showcase the food and your event in the best light.



sku 01-01-103, V-2406



sku 01-20-203



sku 01-22-108



sku 01-22-108



sku 01-22-108



sku 01-22-108



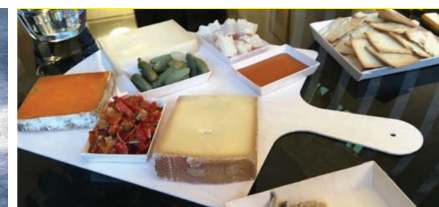
sku 01-22-108

CHEESE & CHARCUTERIE

Our elegant compostable products enhance your presentation and margin while also offering your customers convenience. Minimize setup and cleanup - just simply throw away or compost after use. Highlight your specialty offerings on VerTerra chef boards! Sell more than just cheese, sell an experience.



sku TG-C-77X5, TC-C-114X1



sku C7-SO-1X1, sku TG-S7-5X5



sku CB-SQ-5X5

BAKERIES + CHOCOLATIERS

Upgrade your packing by using VerTerra balsa wood boxes to instantly make your packaged goods look more desirable. Use them for to-go, gift packaging, and more! Our boxes are practical, priced right, and sustainable - while being sleek and stylish at the same time. Since our boxes are light-weight and store flat you won't have to worry about storage space!



sku TG-C-B-4X5



sku TG-C-B-5X1



sku TG-C-B-7X7



SETTING THE TABLE FOR A SUSTAINABLE FUTURE



Verterra.com 212.760.1200 Info@Verterra.com

90A WASHINGTON STREET NORWALK, CT 06854