

PSI RETAIL CATALOG 2026



Table of Contents

INSIGNIA BY PSI

Custom Printed Bags	4
---------------------	---

PAPER SHOPPERS

Recycled Kraft Paper Shoppers	6
White Kraft Paper Shoppers	7
Solid Tints on Kraft	8
Solid Tints on White Kraft	8
White / Kraft Turn Top Shoppers	9
Colored Turn Top Shoppers	9
Natural Tint Shadow Stripe	9
Ice Collection	10
Safari Collection	10
Stock Designs on White Kraft	11
Kraft Bags with Black Handles	11
Coastal Vibes Paper Shoppers	13
Mountain Vibes Paper Shoppers	13

E-COMMERCE

Corrugated Mailer Boxes	15
Corrugated Pillow Style Presentation Boxes	15
Poly Mailers	16
Vela Tissue Bags	16
Designer Gift Card Pockets	17
Designer Folders	17

LUXURY BAGS

Matte Euro Totes	19
Non-Laminated Natural Kraft Euro Totes	20
Non-Laminated Colored Euro Totes	20

Gloss Euro Totes	21
Rose & White Pearl Luster Euro Totes	21
Inverted Trapezoid Euro Totes	23
White Soft Touch Euro Totes	23
Small Purse Boxes	24
Large Purse Boxes	24
White Soft Touch Purse	24
Le Clutch Purse Boxes	25
Geo Luxe Euro Totes	25
Food Service Euro Totes	26
Bottle Euro Totes	26
Black Beater-Dyed Die Cut Bags	27
Kraft Die Cut Bags	27
White Fashion Laminated Gift Bags	27
White Fashion Die Cut Laminated Bags	27

POLY BAGS

Poly Pouches	29
Frosted Clear Soft Touch Drawstring Pouches	29
High Density Food Service Poly Shoppers	30
White Low Density Bags	30
Frosted Clear Poly Die Cuts	31
Frosted Colored Poly Die Cuts	31
Frosted Clear Poly Flexi-Loops	32
Frosted Clear Poly Flexi-Loops - Economy Line	32
Frosted Colored Poly Flexi-Loops	34
Frosted Clear Euro Totes	35
Super Clear PP Bags	35
Frosted Colored Die Cut Merchandise Bags	36
Frosted Clear Die Cut Merchandise Bags	36
Harlequin Design Die Cut Bags	36

REUSABLE BAGS

USA Non-Woven PP Shoppers	38
USA Non-Woven Sonic Weld Die Cut Bags	39
Non-Woven PP Shoppers	40
Non-Woven PP Pouches	40
Non-Woven PP Tuff Seal Die Cut Merchandise Bags	41
Non-Woven PP Tuff Seal Shopping Bags	41
White Matte Laminated Non-Woven PP Tuff Seal Bags	41
Non-Woven PP Food Service Bags	42
Euro-Style Non-Woven PP Bags	42

BOXES

Giftware Boxes	44
Apparel Boxes	45
Jewelry Boxes	45

TISSUE







Solid Colored Wrapping Tissue	47-48
Medley Program Wrapping Tissue	48
Assortments Colored Wrapping Tissue	48
White Tissue	48
Recycled Kraft	48
Satinique Tissue	49
Precious Metals Tissue	49
All Occasion Tissue	50
Botanicals Tissue	51
Pearlescence Tissue	51
Season's Greetings Tissue	51
Gemstone Tissue	52
Colored Wax Tissue	52
Swirl Industrial SpiroPack	53
Slivv Sleeves	53
Rolled Tissue	54
Flat Packed Tissue Sheets	54

GENERAL INFORMATION

Custom Information	55
Imprint Methods — Hot Stamp	56-57
Imprint Methods — Flexo-Ink	58
Terms & Guidelines — Order Information	59-60
Terms & Guidelines — Shipping Information	60-61
Terms & Guidelines — Products & Production	61-62
Terms & Guidelines — Artwork & Proofs	62-63
Terms & Guidelines — Post-Printing Processes	63-64



IMPORTANT SYMBOLS

-  Great for food service!
-  On sale with limited stock available.
-  Great for e-commerce customers!
-  Select foils can be used on this product. See page 57 for more info.
-  Available by special order.
-  Made in the USA.

GENERAL INFORMATION BEFORE USING THIS CATALOG

PLEASE NOTE: Product dimensions, colors, and handles may vary within acceptable industry standards. Production time is only 10-15 business days after proof approval for orders under 6,000 impressions. Rush service is available. Please read our terms and guidelines for more specific information (Pages 59-64).

Pricing is subject to change due to a number of factors including higher material costs, tightness of supplies, rising labor costs and transportation costs. Please check with your customer service representative for product availability and the most up-to-date product pricing.

Insignia Custom Paper Bag Manufacturing

Custom paper bags with full-coverage printing and a wide range of customization made to reflect your brand, your way.

We're bringing the trusted PSI standard to Bag Manufacturing!

Contact us today and discover what you've been missing!



Insignia
by PSI

INSIGNIA BY PSI

Showcase your brand with fully customized, premium paper bags—proudly crafted in our Carrollton, TX facility. Insignia is here to elevate your brand!



OUR INSIGNIA PRODUCTION WORKFLOW



PAPER SHOPPERS

RECYCLED KRAFT PAPER SHOPPERS

Kraft paper shopping bags with a serrated top edge and twisted paper handles. Contains a minimum of 40% post consumer recycled content. *PLEASE NOTE: Bag sizes and imprint areas vary slightly depending on Manufacturer.



ITEM CODE	NAME	SIZE	CS PK	CS WT	MAX IMPRINT - HOT STAMP (A)	MAX IMPRINT - FLEXO-INK (A)
0508KFT	Bluebonnet	5.25 x 3.25 x 8.375	250	13	3.5 x 3.5	3 x 3.5
5313KFT	Boot	5.25 x 3.25 x 13	250	16	3.5 x 8	3 x 7.5
0808 KFT	Pecan	8 x 5 x 8	250	16	6 x 3.5	6 x 3.5
0810KFT	Lone Star	8 x 4.75 x 10.5	250	20	6 x 6	6 x 5
1010KFT	Armadillo	10 x 5 x 10	250	24	8 x 6	8 x 5
1012KFT ✂	Howdy	10 x 6.75 x 12	250	28	8 x 7	8 x 6.5
1013KFT	Cowboy	10 x 5 x 13	250	26	8 x 8	8 x 7.5
1111KFT	Cactus	11.75 x 8 x 11.75	250	34	9 x 7	9 x 7
1215KFT ✂	Chili	12 x 9 x 15.75	200	34	10 x 8	10 x 9
1313KFT ✂	Square Dance	13 x 7 x 13	250	35	11 x 8	11 x 7.5
1315KFT	Tex-Mex	13 x 6 x 15.75	250	35	11 x 8	11 x 9
1317KFT ✂	Guitar	13 x 7 x 17	250	42	11 x 8	11 x 9
1415KFT ✂	Rodeo	14 x 9.75 x 16	200	40	12 x 8	12 x 9
1612KFT	Longhorn	16 x 6 x 12	250	37	12 x 7	14 x 6.5
1619KFT	Big Tex	16 x 6 x 19.25	200	40	12 x 8	14 x 9
1818KFT	Rio Grande	18 x 7 x 18.5	200	46	12 x 8	14 x 9

*****PLEASE NOTE, WE INTERCHANGE BETWEEN MANUFACTURERS DEPENDING ON AVAILABILITY. IF ONE KIND IS DESIRED OVER THE OTHER, IT MUST BE NOTED ON THE PURCHASE ORDER FOR BOTH NATURAL KRAFT AND WHITE KRAFT ITEMS*****

Hot Stamp and Flexo-Ink decoration available, see pages 57-58 for more information.

WHITE KRAFT PAPER SHOPPERS

White paper shopping bags with a serrated top edge and twisted paper handles. *PLEASE NOTE: Bag sizes and imprint areas vary slightly depending on Manufacturer.



ITEM CODE	NAME	SIZE	CS PK	CS WT	MAX IMPRINT - HOT STAMP (A)	MAX IMPRINT - FLEXO-INK (A)
0508KFT	Bluebonnet	5.25 x 3.25 x 8.375	250	13	3.5 x 3.5	3 x 3.5
5313KFT	Boot	5.25 x 3.25 x 13	250	16	3.5 x 8	3 x 7.5
0808 KFT	Pecan	8 x 5 x 8	250	16	6 x 3.5	6 x 3.5
0810KFT	Lone Star	8 x 4.75 x 10.5	250	20	6 x 6	6 x 5
1010KFT	Armadillo	10 x 5 x 10	250	24	8 x 6	8 x 5
1012KFT ✕	Howdy	10 x 6.75 x 12	250	28	8 x 7	8 x 6.5
1013KFT	Cowboy	10 x 5 x 13	250	26	8 x 8	8 x 7.5
1111KFT	Cactus	11.75 x 8 x 11.75	250	34	9 x 7	9 x 7
1215KFT ✕	Chili	12 x 9 x 15.75	200	34	10 x 8	10 x 9
1313KFT ✕	Square Dance	13 x 7 x 13	250	35	11 x 8	11 x 7.5
1315KFT	Tex-Mex	13 x 6 x 15.75	250	35	11 x 8	11 x 9
1317KFT ✕	Guitar	13 x 7 x 17	250	42	11 x 8	11 x 9
1415KFT ✕	Rodeo	14 x 9.75 x 16	200	40	12 x 8	12 x 9
1612KFT	Longhorn	16 x 6 x 12	250	37	12 x 7	14 x 6.5
1619KFT	Big Tex	16 x 6 x 19.25	200	40	12 x 8	14 x 9
1818KFT	Rio Grande	18 x 7 x 18.5	200	46	12 x 8	14 x 9

*****PLEASE NOTE, WE INTERCHANGE BETWEEN MANUFACTURERS DEPENDING ON AVAILABILITY. IF ONE KIND IS DESIRED OVER THE OTHER, IT MUST BE NOTED ON THE PURCHASE ORDER FOR BOTH NATURAL KRAFT AND WHITE KRAFT ITEMS*****

Hot Stamp and Flexo-Ink decoration available, see pages 57-58 for more information.

SOLID TINTS ON KRAFT SHOPPERS

Solid colors printed on kraft paper with kraft twisted paper handles. Our black kraft bags have matching black twisted paper handles.



 BROWN
[BRO-M] - 0810, 1612

 BLACK - HAS BLACK HANDLES
[BLT-M]

 EVERGREEN
[EVE-M]

 NAVY
[NAV-M]

 SLATE GRAY
[GRA-M] - 0810, 1612

ITEM CODE	SIZE	CS PK	CS WT	MAX IMPRINT - HOT STAMP (A)	MAX IMPRINT - FLEXO-INK (A)
0508[...]*	5.25 x 3.25 x 8.375	250	13	3.5 x 3.5	3 x 3.5
0810[...]	8 x 4.75 x 10.5	250	21	6 x 6	6 x 5
1612[...]	16 x 6 x 12	250	36	12 x 7	14 x 6.5

*SIZE 0508[...] IS AVAILABLE IN BLACK [BLK-M], EVERGREEN [EVE-M], AND NAVY [NAV-M].

Hot Stamp and Flexo-Ink decoration available, see pages 57-58 for more information.

SOLID TINTS ON WHITE KRAFT

Solid colors printed on white kraft paper with white twisted paper handles.

 TURQUOISE
[TUR-M]

 DRAGON FRUIT
[DRA-M]

 CAMEL
[CAM-PSI]

 PURPLE
[PUR-PSI]

 BRIGHT YELLOW
[YEL-PSI]



ITEM CODE	NAME	SIZE	CS PK	CS WT	MAX IMPRINT - HOT STAMP (A)	MAX IMPRINT - FLEXO-INK (A)
0508[...]	Bluebonnet	5.25 x 3.25 x 8.375	250	13	3.5 x 3.5	3 x 3.5
0810[...]	Lone Star	8 x 4.75 x 10.5	250	21	6 x 6	6 x 5
1612[...]	Longhorn	16 x 6 x 12	250	36	12 x 7	14 x 6.5

Hot Stamp and Flexo-Ink decoration available, see pages 57-58 for more information.

TURN TOP SHOPPERS - THEY'RE BACK!

Paper turn top bag with J-cut twisted paper handles. This bag is 100% recyclable. Our black turn top bags are made with black beater-dyed paper. Navy and Greige bags are colored tinted on white paper.



ITEM CODE	SIZE	GSM	CS PK	MAX IMPRINT - HOT STAMP (A)	MAX IMPRINT - FLEXO-INK (A)
8548[...]	8.5 x 4.75 x 8	150	200	6 x 4.5	6 x 4.5
1413[...]	14 x 6 x 13.5	150	100	11 x 8	11 x 8

Hot Stamp and Flexo-Ink decoration available, see pages 57-58 for more information.

NATURAL TINT SHADOW STRIPE SHOPPERS

Tone on tone shadow stripe pattern printed on solid tinted kraft paper bags to give interest to the eye. Made from at least 40% post consumer & 11% post industrial fibers. Black bags have matching black twisted paper handles. White bags have matching white twisted paper handles.



ITEM CODE	NAME	SIZE	CS PK	CS WT	MAX IMPRINT - HOT STAMP (A)	MAX IMPRINT - FLEXO-INK (A)
0508SS[...]	Bluebonnet	5.25 x 3.25 x 8.375	250	13	3.5 x 3.5	3 x 3.5
0810SS[...]	Lone Star	8 x 4.75 x 10.5	250	21	6 x 6	6 x 5
1612SS[...]	Longhorn	16 x 6 x 12	250	36	12 x 7	14 x 6.5

Hot Stamp and Flexo-Ink decoration available, see pages 57-58 for more information.

ICE COLLECTION

White kraft bag with 100% ice overprint and white handles. Varnish coating gives this bag a sparkly satin look.

 LIGHT PINK ICE
[PIN-M]



ITEM CODE	NAME	SIZE	CS PK	CS WT	MAX IMPRINT - HOT STAMP (A)	MAX IMPRINT - FLEXO-INK (A)
0810[...]	Lone Star	8 x 4.75 x 10.5	250	21	6 x 6	6 x 5
1612[...]	Longhorn	16 x 6 x 12	250	36	12 x 7	14 x 6.5

Hot Stamp and Flexo-Ink decoration available, see pages 57-58 for more information.

SAFARI COLLECTION

Metallic tints on kraft with twisted paper handles. Made with 50% recycled materials, 40% PC recycled materials & 10% post industrial recycled materials.

 HIHO SILVER
[HIHO-M]



ITEM CODE	NAME	SIZE	CS PK	CS WT	MAX IMPRINT - HOT STAMP (A)	MAX IMPRINT - FLEXO-INK (A)
0508[...]	Bluebonnet	5.25 x 3.25 x 8.375	250	13	3.5 x 3.5	3 x 3.5
0810[...]	Lone Star	8 x 4.75 x 10.5	250	21	6 x 6	6 x 5
1612[...]	Longhorn	16 x 6 x 12	250	36	12 x 7	14 x 6.5

Hot Stamp and Flexo-Ink decoration available, see pages 57-58 for more information.

COLOR DESIGNS ON WHITE KRAFT

Color designs printed on white kraft paper with white twisted paper handles.

-  NAVY GINGHAM
[GIN-PSI]
-  FRACTAL PINK
[FRA-PSI]
-  YELLOW DIAMOND
[DIA-PSI]



ITEM CODE	NAME	SIZE	CS PK	CS WT	MAX IMPRINT - HOT STAMP (A)	MAX IMPRINT - FLEXO-INK (A)
0810[...]	Lone Star	8 x 4.75 x 10.5	250	21	6 x 6	6 x 5
1612[...]	Longhorn	16 x 6 x 12	250	36	12 x 7	14 x 6.5

Hot Stamp and Flexo-Ink decoration available, see pages 57-58 for more information.

KRAFT BAGS WITH BLACK HANDLES

Kraft paper shopping bags with black twisted paper handles.

-  KRAFT
[KFBK-PSI]



ITEM CODE	NAME	SIZE	CS PK	CS WT	MAX IMPRINT - HOT STAMP (A)	MAX IMPRINT - FLEXO-INK (A)
0810[...]	Lone Star	8 x 4.75 x 10.5	250	21	6 x 6	6 x 5
1612[...]	Longhorn	16 x 6 x 12	250	36	12 x 7	14 x 6.5

Hot Stamp and Flexo-Ink decoration available, see pages 57-58 for more information.

INTRODUCING OUR NEW PAPER SHOPPERS!

COASTAL & MOUNTAIN VIBES COLLECTION

Paper Shoppers Inspired by Nature
FEATURING UNIQUE INSIDE PRINTING



WAVE DESIGN PRINTED INSIDE EVERY BAG!



MOUNTAIN DESIGN PRINTED INSIDE EVERY BAG!

COASTAL VIBES COLLECTION 🇺🇸 -NEW!

Solid color printed outside & wave design printed inside on white paper with white twisted paper handles.

- CORAL
[COR-PSI]
- LILAC HAZE
[LIL-PSI]
- SEAFOAM GREEN
[SEA-PSI]



16 x 6 x 12

ITEM CODE	NAME	SIZE	CS PK	CS WT	MAX IMPRINT - HOT STAMP (A)	MAX IMPRINT - FLEXO-INK (A)
0810[...]	Lone Star	8 x 4.75 x 10.5	250	21	6 x 6	6 x 5
1612[...]	Longhorn	16 x 6 x 12	250	36	12 x 7	14 x 6.5

Hot Stamp and Flexo-Ink decoration available, see pages 57-58 for more information.

MOUNTAIN VIBES COLLECTION 🇺🇸 -NEW!

Solid color printed outside & mountain design printed inside on kraft paper with kraft twisted paper handles.

- REDWOOD
[WOO-PSI]
- GLACIER MIST
[GLA-PSI]
- AUTUMN
[AUT-PSI]



16 x 6 x 12

ITEM CODE	NAME	SIZE	CS PK	CS WT	MAX IMPRINT - HOT STAMP (A)	MAX IMPRINT - FLEXO-INK (A)
0810[...]	Lone Star	8 x 4.75 x 10.5	250	21	6 x 6	6 x 5
1612[...]	Longhorn	16 x 6 x 12	250	36	12 x 7	14 x 6.5

Hot Stamp and Flexo-Ink decoration available, see pages 57-58 for more information.

MADE IN USA PAPER SHOPPERS

Our domestic bags deliver fast with made-in-America quality you can count on.



CORRUGATED MAILER BOXES

Reversible natural kraft / 100% tinted black 1 piece folding boxes. Minimum of 100 pcs per order.



ITEM CODE	SIZE	GSM	BUNDLE	CS WT	MAX IMPRINT - HOT STAMP (A)
1173KBMAILER	11.25 x 7.25 x 3	200	25	12	9 x 4.5
1595KBMAILER	15 x 9.25 x 5.25	200	25	20	10 x 6

Hot Stamp and Flexo-Ink decoration available, see pages 57-58 for more information.

CORRUGATED PILLOW STYLE PRESENTATION BOXES

Natural kraft plain and natural kraft dipped in solid black corrugated pillow boxes.



ITEM CODE	COLOR	SIZE	FLUTE	CS PK	CS WT	MAX IMPRINT - HOT STAMP (A)	MAX IMPRINT - FLEXO-INK (A)
BOS0912KFT	KRAFT	9 x 2 x 12	F	100	23	6 x 5	6 x 5
BOS0912BLKT	KRAFT / BLACK	9 x 2 x 12	F	100	23	6 x 5	6 x 5
BOS1419KFT	KRAFT	14.25 x 2 x 19	F	50	27	8 x 8	8 x 8
BOS1419BLKT	KRAFT / BLACK	14.25 x 2 x 19	F	50	27	8 x 8	8 x 8

Hot Stamp and Flexo-Ink decoration available, see pages 57-58 for more information.

POLY MAILERS

Plain stock minimum order of 2 packs, may combine sizes. Printed and hot stamped minimum of 2 packs per size.



19 x 24 14.5 x 19 12 x 15.5 10 x 13



ITEM CODE	SIZE	CS WT	MIL	PACK	MAX IMPRINT - HOT STAMP (A)	MAX IMPRINT - FLEXO-INK (A)
1013WTMAILER	10 x 13	4	2.5	100	8 x 7	8 x 7
1215WTMAILER	12 x 15.5	5	2.5	100	10 x 8	10 x 8
1419WTMAILER	14.5 x 19	5	2.5	100	12 x 8	12 x 9
1924WTMAILER	19 x 24	11	2.5	100	12 x 8	14 x 9

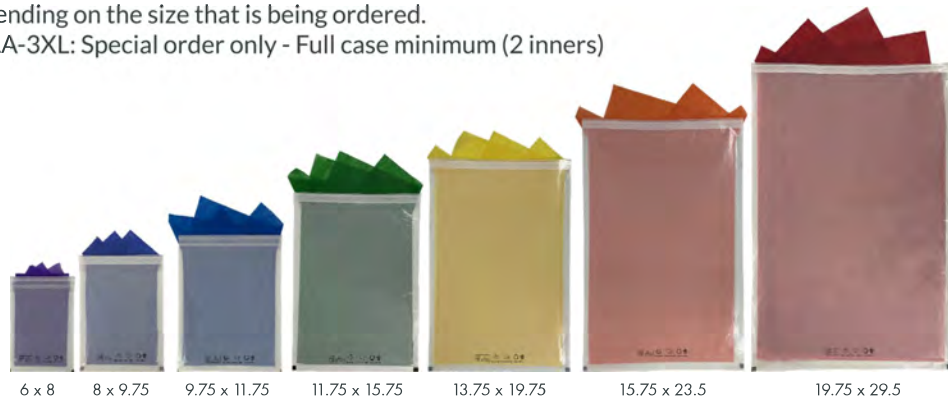
POLY MAILERS ARE BUNDLED IN PLASTIC PACKS OF 100. SHIPPING BOXES WILL BE FILLED WITH AS MANY PACKS THAT WILL FIT; THERE IS NO SET NUMBER PACKS PER BOX. IF YOU WOULD LIKE TO SET UP SPECIFIC SHIPPING/PACKING INSTRUCTIONS, PLEASE CONTACT YOUR SALES REP PRIOR TO PLACING THE ORDER AS THERE WILL BE AN ADDITIONAL CHARGE.

Hot Stamp and Flexo-Ink decoration available, see pages 57-58 for more information.



VELA TISSUE BAGS

The sustainable alternative to plastic poly bags. Product made from 21.5# / 35gsm fully recyclable paper. Side air holes near the bottom allow for flat packing. 500 minimum per size to print or hot stamp. Please note: The inner quantity per case varies depending on the size that is being ordered.

*4060VELA-2XL & 5075VELA-3XL: Special order only - Full case minimum (2 inners)



6 x 8 8 x 9.75 9.75 x 11.75 11.75 x 15.75 13.75 x 19.75 15.75 x 23.5 19.75 x 29.5

ITEM CODE	SIZE	CS WT	GSM	PACK	MAX IMPRINT - HOT STAMP (A)	MAX IMPRINT - FLEXO-INK (A)
1520VELA-XS	6 x 8 + 1.5	10	35	250	4 x 5	4 x 5
2025VELA-S	8 x 9.75 + 1.5	14	35	250	6 x 6.75	6 x 6.75
2530VELA-M	9.75 x 11.75 + 1.5	15	35	250	7 x 8	7 x 8
3040VELA-L	11.75 x 15.75 + 1.5	22	35	250	9 x 8	9 x 9
3550VELA-XL	13.75 x 19.75 + 1.5	29	35	250	11 x 8	11 x 9
4060VELA-2XL 	15.75 x 23.5 + 1.5	24	35	250	12 x 8	13 x 9
5075VELA-3XL 	19.75 x 29.5 + 1.5	36	35	250	12 x 8	14 x 9

Hot Stamp and Flexo-Ink decoration available, see pages 57-58 for more information.

DESIGNER GIFT CARD POCKET

Natural kraft plain, black beater-dyed, white kraft paper gift card envelope with string closure.



ITEM CODE	COLOR	SIZE	GSM	CS PK	CS WT	MAX IMPRINT - HOT STAMP (B)
PAS0404WHT	WHITE	4.375 x 4.375	250	100	5	3 x 3
PAS0404BLK	BLACK	4.375 x 4.375	250	100	5	3 x 3
PAS0404KFT	KRAFT	4.375 x 4.375	250	100	5	3 x 3

Hot Stamp decoration available, see page 57 for more information.

DESIGNER FOLDER

Natural kraft plain, black beater-dyed, white kraft folder with pocket on right side.



ITEM CODE	COLOR	SIZE	GSM	CS PK	CS WT	MAX IMPRINT - HOT STAMP (B)	MAX IMPRINT - FLEXO-INK (A)
PAS0409BLK	BLACK	4.5 x 9	250	100	6	FRONT: 3.5 x 7 POCKET: 3.5 x 2.5	FRONT ONLY: 3.5 x 7
PAS0409WHT	WHITE	4.5 x 9	250	100	6	FRONT: 3.5 x 7 POCKET: 3.5 x 2.5	FRONT ONLY: 3.5 x 7
PAS0409KFT	KRAFT	4.5 x 9	250	100	6	FRONT: 3.5 x 7 POCKET: 3.5 x 2.5	FRONT ONLY: 3.5 x 7

Hot Stamp and Flexo-Ink decoration available, see pages 57-58 for more information.

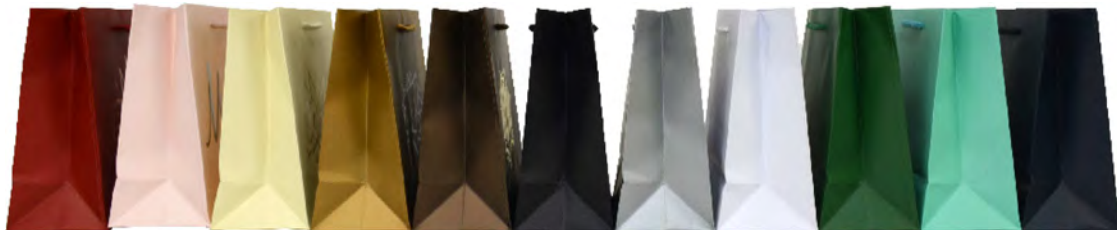
CUSTOM BOXES

Our custom design team is available to help you build a box to package your products properly. We offer a huge variety of custom domestic and overseas options and will work with you to achieve your packaging needs.



MATTE LAMINATED EURO TOTES

Traditional shape matte laminated paper euro tote with closely matching handles.***
Matching purse boxes available in certain colors on [page 24](#).



ITEM CODE	SIZE	GSM	CS PK	CS WT	MAX IMPRINT - HOT STAMP (A)
6363[...]	6.5 x 3.5 x 6.5	180	200	22	4 x 3
8494[...]	8 x 4 x 9	180	200	30	6 x 5
1310[...]	13 x 4.5 x 10	180	200	49	8 x 6
1613[...]	16 x 4.75 x 13	180	100	33	12 x 7
2016[...]	20 x 6 x 16	180	100	48	12 x 8

*HAS A MATCHING PURSE STYLE GIFT BAG

**MATTE NAVY, MATTE GARNET, MATTE EMERALD GREEN, & MATTE PINK CHIFFON ARE ONLY AVAILABLE IN 8494, 1310, AND 1613.

***NOTE: WE ARE TRANSITIONING ALL LUXURY BAGS TO COTTON TWILL RIBBON HANDLES. ROPE HANDLE AVAILABILITY IS LIMITED AND WILL BE REPLACED AS STOCK RUNS OUT. PLEASE CONTACT YOUR SALES REP OR CUSTOMER SERVICE FOR CURRENT AVAILABILITY.

Hot Stamp decoration available, see page 57 for more information.

NON-LAMINATED EURO TOTES



NON-LAMINATED NATURAL KRAFT EURO TOTES

Traditional shape, 100% kraft paper euro tote with closely matching handles.* Matching purse style bag available on [page 24](#). Natural kraft is made from 100% recycled content.

ITEM CODE	SIZE	GSM	CS PK	CS WT	MAX IMPRINT - HOT STAMP (A)
4414KTEURO	4 x 4 x 14	170	200	22	2.5 x 7
6363KTEURO	6.5 x 3.5 x 6.5	170	200	20	4 x 3
8494KTEURO	8 x 4 x 9	170	200	30	6 x 5
1310KTEURO	13 x 4.5 x 10	170	200	44	8 x 6
1613KTEURO	16 x 4.75 x 13	170	100	30	12 x 7
2016KTEURO	20 x 6 x 16	170	100	48	12 x 8

NON-LAMINATED COLORED EURO TOTES

Traditional shape paper euro tote with closely matching handles.* Matching purse style bag available on [page 24](#).

ITEM CODE	SIZE	GSM	CS PK	CS WT	MAX IMPRINT - HOT STAMP (A)
8494[...]	8 x 4 x 9	180	200	30	6 x 5
1310[...]	13 x 4.5 x 10	180	200	44	8 x 6
1613[...]	16 x 4.75 x 13	180	100	30	12 x 7

*NOTE: WE ARE TRANSITIONING ALL LUXURY BAGS TO COTTON TWILL RIBBON HANDLES. ROPE HANDLE AVAILABILITY IS LIMITED AND WILL BE REPLACED AS STOCK RUNS OUT. PLEASE CONTACT YOUR SALES REP OR CUSTOMER SERVICE FOR CURRENT AVAILABILITY.

Hot Stamp decoration available, see page 57 for more information.

GLOSS EURO TOTES

Traditional shape gloss laminated paper euro tote with closely matching handles.* Matching purse style bag available on [page 24](#).

 GLOSS BLACK
[GBK]

 GLOSS WHITE
[GWH]



8 x 4 x 9

6.5 x 3.5 x 6.5

16 x 4.75 x 13

13 x 4.5 x 10

ITEM CODE	SIZE	GSM	CS PK	CS WT	MAX IMPRINT - HOT STAMP (A)
6363[...]	6.5 x 3.5 x 6.5	180	200	22	4 x 3
8494[...]	8 x 4 x 9	180	200	30	6 x 5
1310[...]	13 x 4.5 x 10	180	200	49	8 x 6
1613[...]	16 x 4.75 x 13	180	100	33	12 x 7
2016[...]	20 x 6 x 16	180	100	48	12 x 8

NOTE: WE ARE TRANSITIONING ALL LUXURY BAGS TO COTTON TWILL RIBBON HANDLES. ROPE HANDLE AVAILABILITY IS LIMITED AND WILL BE REPLACED AS STOCK RUNS OUT. PLEASE CONTACT YOUR SALES REP OR CUSTOMER SERVICE FOR CURRENT AVAILABILITY.

Hot Stamp decoration available, see page 57 for more information.

ROSE & WHITE PEARL LUSTER EURO TOTES

Non-laminated euro totes with matching inserted flat cotton twill ribbon handles, 40% recycled content. White pearl luster euro totes are coated with a varnish to give it a pearlized satin finish.

 ROSE
[ROS]

 WHITE
[WHT]



16 x 4.75 x 13

13 x 4.5 x 10

8 x 4 x 9

ITEM CODE	COLOR	SIZE	GSM	CS PK	CS WT	MAX IMPRINT - HOT STAMP (A)
LPS0809WHT	WHITE	8 x 4 x 9	145	200	24	6 x 5
LPS1310WHT	WHITE	13 x 4.5 x 10	145	100	21	8 x 6
LPS1613WHT	WHITE	16 x 4.75 x 13	145	100	28	12 x 7
PAS0809ROS	ROSE	8 x 4 x 9	150	200	24	6 x 5
PAS1310ROS	ROSE	13 x 4.5 x 10	150	100	21	8 x 6
PAS1613ROS	ROSE	16 x 4.75 x 13	150	100	28	12 x 7

Hot Stamp decoration available, see page 57 for more information.

BAG PAIRING IDEAS

Boost the power of your brand identity when you mix and match our bags.



INVERTED TRAPEZOID EURO TOTES

Inverted trapezoid shape matte laminated paper euro tote with closely matching handles.**

BLACK
[MBK]

GOLD DUST
[GDU]

IVORY
[MIV]

WHITE
[MWH]



ITEM CODE	SIZE	GSM	CS PK	CS WT	MAX IMPRINT - HOT STAMP (A)
4646[...]	4.5/6.25 x 4 x 6	180	200	22	3 x 3
7104[...]	7.5/10 x 4 x 8.75	180	200	31	5 x 5
1216[...]	12.5/16 x 5.25 x 11	180	100	31	10 x 6.5

*MATCHING PURSE STYLE GIFT BAG AVAILABLE FOR [GDU].

**NOTE: WE ARE TRANSITIONING ALL LUXURY BAGS TO COTTON TWILL RIBBON HANDLES. ROPE HANDLE AVAILABILITY IS LIMITED AND WILL BE REPLACED AS STOCK RUNS OUT. PLEASE CONTACT YOUR SALES REP OR CUSTOMER SERVICE FOR CURRENT AVAILABILITY.

Hot Stamp decoration available, see page 57 for more information.

WHITE SOFT TOUCH EURO TOTES

Traditional shape paper soft touch laminated paper euro tote with closely matching handles.** Matching purse style bag available on [page 24](#).



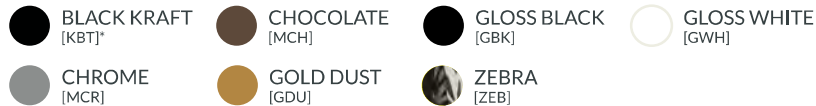
ITEM CODE	SIZE	GSM	CS PK	CS WT	MAX IMPRINT - HOT STAMP (A)
9407STWH	9 x 4.5 x 7	180	200	22	7 x 4
1309STWH*	13.5 x 5 x 9	180	100	30	11 x 6

*COMES WITH A 33" SHOULDER LENGTH HANDLE.

**NOTE: WE ARE TRANSITIONING ALL LUXURY BAGS TO COTTON TWILL RIBBON HANDLES. ROPE HANDLE AVAILABILITY IS LIMITED AND WILL BE REPLACED AS STOCK RUNS OUT. PLEASE CONTACT YOUR SALES REP OR CUSTOMER SERVICE FOR CURRENT AVAILABILITY.

Hot Stamp decoration available, see page 57 for more information.

PURSE BOXES



SMALL PURSE BOXES

3 dimensional pyramid shaped purse style bag ideal for gift cards and small gifts with 0.5" wide closely matched satin ribbons (separately bundled).

ITEM CODE	SIZE	GSM	CS PK	CS WT	MAX IMPRINT - HOT STAMP (B)
423[...]*PURSE	4.5 x 2 x 3.75	210	100	6	3.5 x 2.25
423[...]*PURSE	4.5 x 2 x 3.75	260	100	6	3.5 x 2.25

LARGE PURSE BOXES

3 dimensional pyramid shaped purse style bag ideal for small gifts with 1.5" wide closely matched satin ribbon (separately bundled)

ITEM CODE	SIZE	GSM	CS PK	CS WT	MAX IMPRINT - HOT STAMP (A)
835[...]*PURSE	8 x 3.5 x 5.5	260	100	12	6 x 3

Hot Stamp decoration available, see page 57 for more information.

WHITE SOFT TOUCH PURSE

3 dimensional pyramid shaped soft touch purse style bag ideal for gift cards and small gifts with 0.5" wide white grosgrain ribbon (separately bundled).



ITEM CODE	SIZE	GSM	CS PK	CS WT	MAX IMPRINT - HOT STAMP (B)
524STWPURSE	5 x 2.75 x 4.5	230	100	9	4 x 3.5

Hot Stamp decoration available, see page 57 for more information.

LE CLUTCH PURSE BOXES - NEW!

Chic and unique clutch-style gift boxes with a full interior color and thick grosgrain ribbon. It only needs a simple ribbon tie for the perfect finishing touch. Ideal for upscale gift packaging and retail presentation.



ITEM CODE	ITEM NAME	SIZE	GSM	CS PK	CS WT	MAX IMPRINT - HOT STAMP (B)
524[...]	PURSE LE CLUTCH MINI	5 x 2.75 x 4.5 + 1.5	190	100	15	3 x 1.5
1311[...]	PURSE LE CLUTCH PURSE	13.5 x 6.5 x 11.5 + 3.7	210	100	30	11 x 6

Hot Stamp and Flexo-Ink decoration available, see pages 57-58 for more information.

GEO LUXE EURO TOTES - NEW!

Matte laminated euro tote with a bold geometric interior print. It features a secure locking top and contrasting 5/8th" grosgrain ribbon handles, adding a touch of luxury. Perfect for high-end retail and gift packaging.



ITEM CODE	SIZE	GSM	CS PK	CS WT	MAX IMPRINT - HOT STAMP (A)
0909[...]	9.75 x 5.25 x 9.5 + 2	210	100	22	7.5 x 5

Hot Stamp decoration available, see page 57 for more information.

FOOD SERVICE EURO TOTES

Traditional shape matte laminated paper euro tote bag with closely matching handles* and a wider gusset for food service. Top reinforced cardboard insert in handle folds and bottom board allows for heavier items to be carried in this bag.

 BLACK
[MBK]

 WHITE
[MWH]



GUSSET VIEW



ITEM CODE	SIZE	GSM	CS PK	MAX IMPRINT - HOT STAMP (A)
1313[...]	13 x 8.5 x 13	180	100	7 x 7

*NOTE: WE ARE TRANSITIONING ALL LUXURY BAGS TO COTTON TWILL RIBBON HANDLES. ROPE HANDLE AVAILABILITY IS LIMITED AND WILL BE REPLACED AS STOCK RUNS OUT. PLEASE CONTACT YOUR SALES REP OR CUSTOMER SERVICE FOR CURRENT AVAILABILITY.

Hot Stamp decoration available, see page 57 for more information.

BOTTLE EURO TOTES

Traditional shape matte laminated paper euro tote bag with closely matching handles.* Top reinforced cardboard insert in handle folds and bottom board allows for heavier items to be carried in this bag.

 BLACK
[MBK]

 WHITE
[MWH]



ITEM CODE	SIZE	GSM	CS PK	CS WT	MAX IMPRINT - HOT STAMP (A)
5515[...]	5 x 5 x 15	180	200	26	3 x 7

*NOTE: WE ARE TRANSITIONING ALL LUXURY BAGS TO COTTON TWILL RIBBON HANDLES. ROPE HANDLE AVAILABILITY IS LIMITED AND WILL BE REPLACED AS STOCK RUNS OUT. PLEASE CONTACT YOUR SALES REP OR CUSTOMER SERVICE FOR CURRENT AVAILABILITY.

Hot Stamp decoration available, see page 57 for more information.

DIE CUT BAGS -THEY'RE BACK!

Bags with parallelogram die cut handles are made with 40% PCW paper. This bag is made with thick gauge paper that makes it feel more like a box than a bag. Black beater-dyed, kraft or white laminated bag options available.



BLACK BEATER-DYED DIE CUT BAGS

ITEM CODE	SIZE	GSM	CS PK	CS WT	MAX IMPRINT - HOT STAMP (A)	MAX IMPRINT - FLEXO-INK (A)
7310BLK	7 x 3 x 10	210	100	14	5 x 6	5 x 4.5
8312BLK	8.5 x 3.5 x 12	210	100	20	6 x 7	6.5 x 6.5
1215BLK	12.5 x 5 x 15	210	100	32	10 x 8	10 x 7.5

KRAFT DIE CUT BAGS

ITEM CODE	SIZE	GSM	CS PK	CS WT	MAX IMPRINT - HOT STAMP (A)	MAX IMPRINT - FLEXO-INK (A)
7310DCKFT	7 x 3 x 10	210	200	26	5 x 6	5 x 4.5
8312DCKFT	8.5 x 3.5 x 12	210	200	34	6 x 7	6.5 x 6.5
1215DCKFT	12.5 x 5 x 15	210	100	32	10 x 8	10 x 7.5

Hot Stamp and Flexo-Ink decoration available, see pages 57-58 for more information.

WHITE FASHION DIE CUT LAMINATED BAGS

Gloss laminated paper bags with die cut handle. Built to feel like a box, this bag is made with heavy gauged paper.

ITEM CODE	SIZE	GSM	CS PK	CS WT	MAX IMPRINT - HOT STAMP (A)
8512WHT	8.5 x 3 x 12	210	100	19	6 x 7

WHITE FASHION LAMINATED GIFT BAGS

Gloss laminated small gift bags with matching grosgrain ribbon.

ITEM CODE	SIZE	GSM	CS PK	CS WT	MAX IMPRINT - HOT STAMP (A)
0402WHT	4.5 x 2.5 x 6.25	210	100	8	3 x 3

Hot Stamp decoration available, see page 57 for more information.

CUSTOM LUXURY BAGS

Custom bags allow you to turn your dream bag into reality. Choose your own shape, style or finish to make your brand stand out.



POLY POUCHES

LDPE poly pouch printed frosted solid color on one side, clear on other side with matching satin ribbon pulls.



ITEM CODE	SIZE	MIL	CS PK	MAX IMPRINT - HOT STAMP (A)
0682[...]	6 x 2 x 8.75	3	200	4 x 4
1216[...]	12 x 4 x 16	3	100	10 x 8

PLEASE NOTE: ARTWORK SIZE MAY NEED TO BE REDUCED TO HELP THE IMPRINT NOT WRINKLE ONCE DRAWSTRINGS ARE PULLED

Hot Stamp decoration available, see page 57 for more information.

FROSTED CLEAR SOFT TOUCH DRAWSTRING POUCHES

A luxurious feel that enhances any product it contains, this soft touch pouch is stylish and affordable! Poly soft touch pouch with grey satin ribbon.



ITEM CODE	SIZE	MIL	CS PK	CS WT	MAX IMPRINT - HOT STAMP (A)
PLS0507STFRS	5 x 7	2.75	200	6	3 x 3
PLS0609STFRS	6.5 x 9	2.75	200	7	4 x 4

PLEASE NOTE: ARTWORK SIZE MAY NEED TO BE REDUCED TO HELP THE IMPRINT NOT WRINKLE ONCE DRAWSTRINGS ARE PULLED

Hot Stamp decoration available, see page 57 for more information.

HIGH DENSITY FOOD SERVICE POLY SHOPPERS

White hi-density poly shoppers with plastic clip loop handles, cardboard top and bottom.



ITEM CODE	SIZE	MIL	CS PK	CS WT	MAX IMPRINT - HOT STAMP (A)
1214WHD	12 x 10 x 14	2.5	250	45	9 x 8

Hot Stamp decoration available, see page 57 for more information.

WHITE LOW DENSITY BAGS

White LDPE poly merchandise bags with fold over die cut made in low density poly for a smooth glossy look and feel.

*Bottom Gusset Only. Low density bags can only be flexo-ink printed with 1 color.



ITEM CODE	SIZE	MIL	CS PK	CS WT	MAX IMPRINT - HOT STAMP (A)	MAX IMPRINT - FLEXO-INK (A)
0912WLD	9 x 12	2.25	500	11	6 x 6	7 x 6.5
1215WLD	12 x 15 + 3*	2.25	500	18	8 x 7	10 x 8
1518WLD	15 x 18 + 3*	2.25	500	27	9 x 8	13 x 9

FLEXO-INK PRINTING AVAILABLE FOR 1 COLOR ONLY (CAN BE 2 SIDED BUT SUBJECT TO ART DEPARTMENT APPROVAL FIRST)

Hot Stamp and Flexo-Ink decoration available, see pages 57-58 for more information.

FROSTED CLEAR POLY DIE CUTS

Hi-density poly die cut handle bags with slotted cardboard bottom.



ITEM CODE	SIZE	MIL	CS PK	CS WT	MAX IMPRINT - HOT STAMP (A)	MAX IMPRINT - FLEXO-INK (A)
0710FRS	7 x 3.5 x 10.5	3.5	500	25	5 x 6.5	5 x 5
7315FRS ✕	7.75 x 3.5 x 15	4	250	18	5 x 8	5.5 x 8
1013FRS	10 x 5 x 13	4	250	24	8 x 8	8 x 8
1615FRS	16 x 6 x 15	4	250	40	12 x 8	14 x 9
2408FRS	24 x 8 x 24	4.5	125	52	12 x 8	N/A

FLEXO-INK PRINTING AVAILABLE FOR 1 COLOR ONLY (CAN BE 2 SIDED BUT SUBJECT TO ART DEPARTMENT APPROVAL FIRST)

Hot Stamp and Flexo-Ink decoration available, see pages 57-58 for more information.

FROSTED COLORED POLY DIE CUTS

Frosted color hi-density poly die cut with slotted cardboard bottom.



ITEM CODE	SIZE	MIL	CS PK	CS WT	MAX IMPRINT - HOT STAMP (A)	MAX IMPRINT - FLEXO-INK (A)
7310[...]	7 x 3.5 x 10.5	4	500	24	5 x 6.5	5 x 5
1615[...]	16 x 6 x 15	4	250	40	12 x 8	14 x 9

FLEXO-INK PRINTING AVAILABLE FOR 1 COLOR ONLY (CAN BE 2 SIDED BUT SUBJECT TO ART DEPARTMENT APPROVAL FIRST)

Hot Stamp and Flexo-Ink decoration available, see pages 57-58 for more information.

FROSTED CLEAR POLY FLEXI-LOOPS

Flexi (soft) loop hi-density poly handle bags with slotted cardboard bottom. Our Economy line is made with 3 mil or less gauge HDPE poly film.



FROSTED CLEAR POLY FLEXI-LOOPS

ITEM CODE	SIZE	MIL	CS PK	CS WT	MAX IMPRINT - HOT STAMP (A)	MAX IMPRINT - FLEXO-INK (A)
5383FFL	5 x 3 x 8	4	250	10	3.5 x 3.5	3 x 3.5
5313FFL ✂	5 x 3 x 13	4	250	13	3.5 x 8	3 x 7.5
8474FFL	8 x 4 x 7	4	250	15	6 x 3.5	N/A
8510FFL	8 x 5 x 10	4	250	19	6 x 6	6 x 5
1013FFL	10 x 5 x 13	4	250	26	8 x 8	8 x 7.5
1313FFL ✂	13 x 7 x 13	4	250	35	9 x 8	11 x 7.5
1415FFL ✂	14 x 10 x 15	4	200	42	10 x 8	12 x 8
1612FFL	16 x 6 x 12	4	250	38	12 x 7	14 x 6.5
1616FFL	16 x 6 x 16	4	250	45	12 x 8	14 x 8
1718FFL	17 x 7 x 18	4	200	45	12 x 8	14 x 9

FROSTED CLEAR POLY FLEXI-LOOPS - ECONOMY LINE

ITEM CODE	SIZE	MIL	CS PK	CS WT	MAX IMPRINT - HOT STAMP (A)	MAX IMPRINT - FLEXO-INK (A)
8474ECC	8 x 4 x 7	3	250	10	6 x 3.5	N/A
8510ECC	8 x 5 x 10	3	250	13	6 x 6	6 x 5
9915ECC ✂	9.75 x 9.25 x 15.5	2.5	200	13	7 x 9	7.5 x 8
1013ECC	10 x 5 x 13	3	250	15	8 x 8	8 x 8
1612ECC	16 x 6 x 12	3	250	19	12 x 7	14 x 6.5
1718ECC	17 x 7 x 18	3	200	45	12 x 8	14 x 9

FLEXO-INK PRINTING AVAILABLE FOR 1 COLOR ONLY (CAN BE 2 SIDED BUT SUBJECT TO ART DEPARTMENT APPROVAL FIRST)

Hot Stamp and Flexo-Ink decoration available, see pages 57-58 for more information.

CUSTOM POLY BAGS

We offer custom overseas poly bags with customizable options such as size, style, gauge, print areas, colors, handles and much more.



FROSTED COLORED POLY FLEXI-LOOPS

Frosted color flexi (soft) loop hi-density poly handle bags with slotted cardboard bottom.



- RED

[RFL]

ORANGE

[OFL]

OCEAN BLUE

[OCBL]

HOT PINK

[HPF]

EVERGREEN

[EFL]

ESPRESSO

[ESP]
- BLACK

[BFL]

SAGE

[SAGE] - 8510



ITEM CODE	SIZE	MIL	CS PK	CS WT	MAX IMPRINT - HOT STAMP (A)	MAX IMPRINT - FLEXO-INK (A)
8474BFL	8 x 4 x 7 [BFL only]	4	250	14	6 x 3.5	N/A
8510[...]	8 x 5 x 10	4	250	19	6 x 6	6 x 5
1612[...]	16 x 6 x 12	4	250	37	12 x 7	14 x 6.5

FLEXO-INK PRINTING AVAILABLE FOR 1 COLOR ONLY (CAN BE 2 SIDED BUT SUBJECT TO ART DEPARTMENT APPROVAL FIRST)

Hot Stamp and Flexo-Ink decoration available, see pages 57-58 for more information.

FROSTED CLEAR EURO TOTES

Frosted clear hi-density poly euro totes with white macrame handles reinforced with clear rigid plastic foldover tops and white grommets, and a slotted cardboard bottom.



ITEM CODE	SIZE	MIL	CS PK	CS WT	MAX IMPRINT - HOT STAMP (A)
6373ROP	6 x 3 x 7	4	250	16	4 x 3.5
8510ROP	8 x 5 x 10	4	250	24	6 x 6
1111ROP ✂	11 x 9 x 11	4	250	45	7 x 7
1210ROP	12 x 4.5 x 10	4	250	40	9 x 6
1612ROP	16 x 6 x 12	4	250	47	12 x 7
1916ROP	19 x 6 x 16	4.5	125	32	12 x 8

Hot Stamp decoration available, see page 57 for more information.

SUPER CLEAR PP BAGS

See-through clear LDPE poly flexi-loop bag with bottom board and matching soft loop handles.

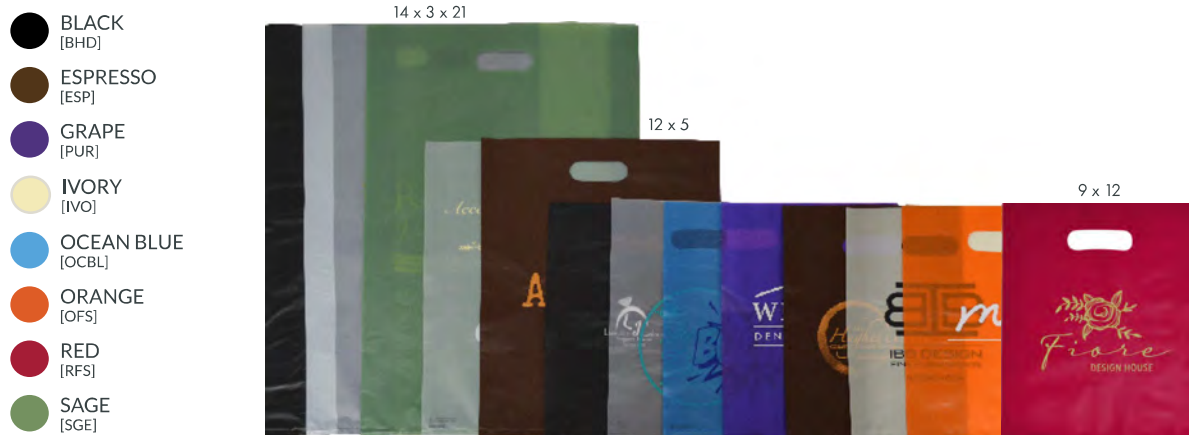


ITEM CODE	SIZE	MIL	CS PK	CS WT	MAX IMPRINT - HOT STAMP (A)
0810CLR	8 x 5 x 10	4	250	21	6 x 6
1212CLR	12 x 6 x 12	4	250	31	8 x 8

Hot Stamp decoration available, see page 57 for more information.

FROSTED DIE CUT MERCHANDISE BAGS

Frosted hi-density poly merchandise bags with die cut handles, pinch bottom. 1421 sized bags have a side gusset.



FROSTED COLORED DIE CUT MERCHANDISE BAGS

ITEM CODE	SIZE	MIL	CS PK	CS WT	MAX IMPRINT - HOT STAMP (A)	MAX IMPRINT - FLEXO-INK (A)
0912[...]*	9 x 12	2.5	500	9	7 x 7	7 x 6.5
1215[...]**	12 x 5	2.5	500	16	9 x 8	10 x 9
1421[...]**	14 x 3 x 21	2.5	500	31	10 x 8	12 x 9

*0912[...] ONLY AVAILABLE IN 1 COLOR FOR FLEXO-INK

**FLEXO-INK PRINTING AVAILABLE FOR 1 COLOR ONLY (CAN BE 2 SIDED BUT SUBJECT TO ART DEPARTMENT APPROVAL FIRST)

FROSTED CLEAR DIE CUT MERCHANDISE BAGS

ITEM CODE	SIZE	MIL	CS PK	CS WT	MAX IMPRINT - HOT STAMP (A)	MAX IMPRINT - FLEXO-INK (A)
0912FRS*	9 x 12	2.5	500	9	7 x 7	7 x 6.5
1215FRS**	12 x 5	2.5	500	16	9 x 8	10 x 9
1421FRS**	14 x 3 x 21	2.5	500	31	10 x 8	12 x 9

*0912[...] ONLY AVAILABLE IN 1 COLOR FOR FLEXO-INK

**FLEXO-INK PRINTING AVAILABLE FOR 1 COLOR ONLY (CAN BE 2 SIDED BUT SUBJECT TO ART DEPARTMENT APPROVAL FIRST)

Hot Stamp and Flexo-Ink decoration available, see pages 57-58 for more information.

HARLEQUIN DESIGN DIE CUT BAGS

Frosted clear hi-density poly die cut printed with metallic gold harlequin design, slotted cardboard bottom.



ITEM CODE	SIZE	MIL	CS PK	CS WT	MAX IMPRINT - HOT STAMP (A)
7310HAR	7 x 3.5 x 10.5	4	250	13	5 x 6
1615HAR	16 x 6 x 15	4	250	41	12 x 8

Hot Stamp decoration available, see page 57 for more information.

BAG PAIRING IDEAS

Match soft color bags with vibrant solid color bags and add personality to your brand.



REUSABLE BAGS

USA NON-WOVEN PP SHOPPERS -NEW!

Bags made in the USA! These reusable bags have Sonic Weld sealed seams and reinforced seals on handles.



-  BLACK [BLK]
-  RED [RED]
-  ROYAL BLUE [BLU]
-  WHITE [WHT]
-  TAN [TAN]
-  ORANGE** [OR]
-  HOT PINK** [HP]
-  STEEL GRAY** [GRA]
-  CERISE** [CER]
-  LIME GREEN** [LGR]
-  NAVY** [NAV]
-  CHOCOLATE** [CHO]
-  PURPLE** [PUR]



ITEM CODE	SIZE	HANDLE	CK PK	CS WT	GSM	MAX IMPRINT - HOT STAMP (C)
0910US[...]	9 x 5 x 10	1 x 16	100	10	90	6 x 5
1210US[...]	12 x 8 x 10	1 x 18	100	13	90	8 x 5
1213US[...]	12 x 8 x 13	1 x 18	100	15	90	8 x 6
1310US[...]	13 x 7 x 10	1 x 18	100	13	90	9 x 5
1313US[...]	13 x 7 x 13	1 x 18	100	15	90	9 x 6
1612US[...]	16 x 7 x 12	1 x 18	100	15	90	12 x 6
1717US[...]	17.5 x 7 x 17.5	1 x 18	100	20	90	12 x 8

**ORANGE IS ONLY AVAILABLE IN 1210, 1213, 1313 AND 1612.

**HOT PINK IS ONLY AVAILABLE IN 1210 AND 1612.

**STEEL GRAY AND CERISE ARE ONLY AVAILABLE IN 1313 AND 1612.

**LIME GREEN IS ONLY AVAILABLE IN 1213.

**NAVY, CHOCOLATE AND PURPLE ARE ONLY AVAILABLE IN 1612.

Hot Stamp decoration available, see page 57 for more information. Select foils can be used on this product.

USA NON-WOVEN PP SONIC WELD DIE CUT MERCHANDISE BAGS -NEW!

Bags made in the USA! These reusable bags have Sonic Weld sealed seams with die cut handles.



ITEM CODE	SIZE	GSM	CS PK	CS WT	MAX IMPRINT - HOT STAMP (C)
0912US[...]	9 x 12	90	200	12	6 x 6
1215US[...]	12 x 15	90	200	15	8 x 7
1518US[...]	15 x 18	90	200	19	11 x 8

*NOTE: THE COLORS LISTED MAY BE ORDERED IN EACH AVAILABLE SIZE. PLEASE CONTACT YOUR SALES REPRESENTATIVE FOR FURTHER INFORMATION.

Hot Stamp decoration available, see page 57 for more information. Select foils can be used on this product.

NON-WOVEN PP SHOPPERS ⚠

Bags have a gusset pocket on one side and features a sturdy reinforced x-stitched handle for carrying heavy items.

- BLACK [BLK]
- CHOCOLATE [CHOC]
- CORPORATE BLUE [CORPB]
- IVORY [IVO] - 1010
- SPRING GREEN [SPG] - 1010
- PINK FACE / ORANGE GUSSET [OP] - 1315
- WHITE FACE / BLACK GUSSET [BW]



ITEM CODE	SIZE	HANDLE	CK PK	CS WT	GSM	MAX IMPRINT - HOT STAMP (C)
1010[...]	10 x 5 x 10	1 x 18	100	10	100	7 x 6
1315[...]	13 x 6 x 15	1 x 28	100	16	100	9 x 8
1916BLK	19 x 7 x 16 [BLK only]	1 x 28	100	21	100	12 x 8

Hot Stamp decoration available, see page 57 for more information. Select foils can be used on this product.

NON-WOVEN PP POUCHES ★🌐

Non-woven PP pouches with matching drawstring ribbon. 75 GSM outside layer, 45 GSM inside layer.

- RED [RED] - 1216, 1622
- CHOCOLATE [CHO]
- BLACK [BLK]
- WHITE [WHT]



ITEM CODE	SIZE	CS PK	CS WT	MAX IMPRINT - HOT STAMP (C)
7103[...]	7 x 10 x 3	100	5	5 x 4.5
1216[...]	12 x 16 x 4	100	8	10 x 8
1622[...]	16 x 22 x 5	100	14	12 x 8

PLEASE NOTE: ARTWORK SIZE MAY NEED TO BE REDUCED TO HELP THE IMPRINT NOT WRINKLE ONCE DRAWSTRINGS ARE PULLED

Hot Stamp decoration available, see page 57 for more information. Select foils can be used on this product.

NON-WOVEN PP TUFF SEAL DIE CUT MERCHANDISE BAGS ★⚠

Non-woven bags with heat sealed seams and reinforced seals on die cut handles.



ITEM CODE	SIZE	GSM	CS PK	CS WT	MAX IMPRINT - HOT STAMP (C)
1012[...]	10 x 12	80	100	8	7.75 x 7.5
1317[...]	13.8 x 17.7	80	100	8	10 x 8

Hot Stamp decoration available, see page 57 for more information. Select foils can be used on this product.

NON-WOVEN PP TUFF SEAL SHOPPING BAGS ★⚠



NON-WOVEN PP TUFF SEAL SHOPPING BAGS

Available in black and white. Heat sealed seams and reinforced seals on handles.

ITEM CODE	SIZE	GSM	CS PK	CS WT	MAX IMPRINT - HOT STAMP (C)
1612[...]	16 x 5 x 12	70	100	8	12 x 7

WHITE MATTE LAMINATED NON-WOVEN PP TUFF SEAL SHOPPING BAGS

Available in white. Matte lamination makes this bag feel sturdy.

ITEM CODE	SIZE	GSM	CS PK	CS WT	MAX IMPRINT - HOT STAMP (C)
1214WLWHT	12 x 6.5 x 14	70	100	11	9 x 8

Hot Stamp decoration available, see page 57 for more information. Select foils can be used on this product.

NON-WOVEN PP FOOD SERVICE BAGS ★🍴⚠️

Bags have a pocket on 1 side, gusset and reinforced grommets at top for added strength. Food service bags have a bottom PP board.

- BLACK
[BLK]
- RED
[RED]
- WHITE
[WHT]



ITEM CODE	SIZE	HANDLE	CK PK	CS WT	GSM	MAX IMPRINT - HOT STAMP (C)
1214[...]	12 x 10 x 14	1.125 x 28	100	30	100	9 x 8

Hot Stamp decoration available, see page 57 for more information. Select foils can be used on this product.

EURO-STYLE NON-WOVEN PP BAGS ★⚠️

White NWPP with gray piping and a gray snap button closure. Matching gray rope handles are inserted into silver grommets.



ITEM CODE	SIZE	GSM	CS PK	CS WT	MAX IMPRINT - HOT STAMP (C)
1412WGR	14 x 4.5 x 12	100	100	27	8 x 7

Hot Stamp decoration available, see page 57 for more information. Select foils can be used on this product.



BAG PAIRING IDEAS

Our bags are made to pair with each other for ultimate brand consistency and recognition.



GIFTWARE BOXES

Boxes 100% Recycled Kraft Pinstripe or White Gloss.

-  100% RECYCLED KRAFT PINSTRIPE
[197]
-  WHITE GLOSS
[000]

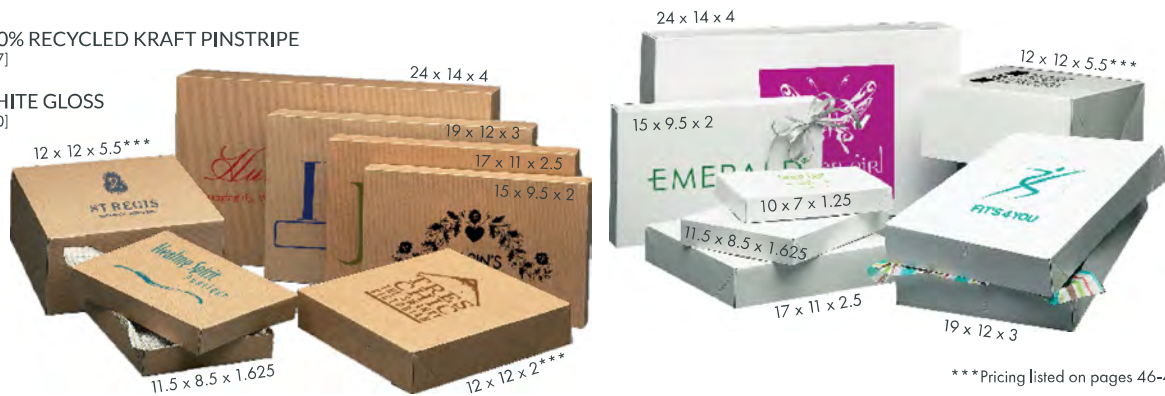


STYLE #	ITEM CODE	SIZE	DESCRIPTION	CS PK	CS WT	MAX IMPRINT - HOT STAMP (B)
#82	54103-[...]	3 x 3 x 2	1PC QL	100	4	2 x 2
#57	54111-[...]	4 x 4 x 4	1PC QL	100	8	3 x 3
#58	54112-[...]	5 x 5 x 3.5	1PC QL	100	11	4 x 4
#59	54115-[...]	6 x 4.5 x 4.5	1PC QL	100	14	5 x 3.5
#60	54113-[...]	6 x 6 x 4	1PC QL	100	17	5 x 5
#61	54114-[...]	6 x 6 x 6	1PC QL	100	21	5 x 5
#17	54120-[...]	8 x 8 x 3.5	1PC QL	100	24	7 x 7
#83	54121-000	8 x 8 x 6	1PC QL	50	16	7 x 7
#41	54135-000	9 x 9 x 5.5	1PC QL	50	18	8 x 8
#67	54119-[...]	9 x 4.5 x 4.5	1PC QL	100	20	8 x 3.5
#86	54131-[...]	12 x 6 x 6	1PC QL	50	33	10 x 4
#520	54125-[...]	12 x 12 x 2.5	2 PC Pop Up	50	20	CALL FOR INFO
#521	54136-[...]	12 x 12 x 5.5	2 PC Pop Up	50	19	CALL FOR INFO

APPAREL BOXES

100% RECYCLED KRAFT PINSTRIPE
[197]

WHITE GLOSS
[000]



***Pricing listed on pages 46-47

STYLE #	ITEM CODE	SIZE	DESCRIPTION	CS PK	CS WT	MAX IMPRINT - HOT STAMP (B)	MAX IMPRINT - FLEXO-INK (A)
#501*	610-000	10 x 7 x 1.25	2 PC Pop Up	100	17	8 x 5	N/A
#503	611-[...]	11.5 x 8.5 x 1.625	2 PC Pop Up	100	22	9.5 x 6.5	7.25 x 4.25
#506	615-[...]	15 x 9.5 x 2	2 PC Pop Up	100	29	10 x 7.5	10 x 4.5
#518	617-[...]	17 x 11 x 2.5	2 PC Pop Up	50	20	10 x 7.5	11 x 5
#519	619-[...]	19 x 12 x 3	2 PC Pop Up	50	27	10 x 7.5	12 x 5
#524	624-[...]	24 x 14 x 4	2 PC Pop Up	25	23	10 x 7.5	14 x 5

*AVAILABLE IN WHITE GLOSS ONLY

**FLEXO-INK ONLY AVAILABLE ON KRAFT BOXES

Hot Stamp and Flexo-Ink decoration available, see pages 57-58 for more information.

JEWELRY BOXES

NATURAL KRAFT
[326]

WHITE KROME
[005]



STYLE #	ITEM CODE	SIZE	CS PK	CS WT	MAX IMPRINT - HOT STAMP (B)
#21	21-[...]	2.5 x 1.5 x 0.875	100	3	1.5 x 0.5
#32	32-[...]	3.0625 x 2.125 x 1	100	4	2 x 1
#33	33-[...]	3.5 x 3.5 x 1	100	6	2.5 x 2.5
#33-D	33D-[...]	3.5 x 3.5 x 1.5	100	7	2.5 x 2.5
#53	53-[...]	5.25 x 3.75 x 0.875	100	8	4.25 x 2.75
#75	75-[...]	7 x 5.5 x 1	50	7	6 x 4.5
#82-A	82A-[...]	8 x 2 x 0.875	100	7	7 x 1
#508	273-001/005	14.5 x 4.5 x 0.75	100	19	12 x 3

Hot Stamp decoration available, see page 57 for more information.

BAG PAIRING IDEAS

Mix and match categories for delightful combinations that will reinforce your company identity.





 Aloe [ALO]	 Apple Green [APP]	 Apricot 🍑 [APR]	 Aquamarine [AQU]	 Black [BLK]
 Blush [BLUSH]	 Boysenberry [BOY]	 Brown [BRO]	 Bright Turquoise [BTU]	 Burnt Orange [BUR]
 Buttercup [BUT]	 Caribbean Blue [CAR]	 Cerise [CER]	 Cherry Red [CHE]	 Cinnamon [CIN]
 Citrus Green [CIT]	 Claret [CLR]	 Cool Mint [COO]	 Coral [COR]	 Dark Pink [DKP]
 Eggplant [EGGPLANT]	 Evergreen [EVE]	 Fiesta Blue [FIE]	 Flamingo [FLA]	 French Vanilla [FRE]
 Goldenrod [GOL]	 Cool Gray [GRA]	 Green Tea [GRE]	 Harvest Gold [HAR]	 Holiday Green [HGR]
 Honeysuckle 🍷 [HON]	 Island Pink [ISL]	 Ivory [IVD]	 Kelly Green [KEL]	 Khaki [KHA]
 Lavender [LAV]	 Light Blue [LBL]	 Light Gray [LGR]	 Lilac [LIL]	 Limon [LIM]
 Light Pink [LPK]	 Mandarin Red [MAN]	 Midnight Blue [MID]	 Mulberry [MUL]	 Olive [OLV]
 Orange [ORA]	 Pacific Blue [PAC]	 Pansy [PAN]	 Parade Blue [PAR]	 Peach [PEA]
 Peacock [PEACOCK]	 Pistachio [PIS]	 Plum [PLU]	 Purple [PUR]	 Raspberry [RAS]
 Raw Sienna [RAW]	 Scarlet [SCA]	 Sky Blue [SKY]	 Slate Gray [SLA]	 Sandstone [STO]
 Tan [TAN]	 Taupe [TAUPE]	 Teal [TEA]	 Turquoise [TUR]	 Willow [WIL]
 Yellow [YEL]				

COLORED WRAPPING TISSUE

Item Code: 2030[...] 10# basis weight 20" x 30" quire fold sheets, 480 sheets per ream, 1 ream wrap, 5 reams per case.
Approximate ream weight: 7 lbs. Colors are shown on previous page.

MEDLEY PROGRAM

Randomly assorted colored tissue interwoven within the same inner. Medley Mix: 12 assorted colors / inner, Medley Brights: 6 bright & bold colors / inner, Medley Lights: 5 pastel colors + white / inner

CATEGORY	SATINWRAP ITEM NO.	WT	DESCRIPTION	SHEETS / INNER	INNERS PER CASE
Medley	2030BRI	7	Medley Brights	480	5
Medley	2030LIG	7	Medley Lights	480	5
Medley	2030MED	7	Medley Mix	480	5

ASSORTMENTS COLORED WRAPPING TISSUE

Fashionable assortment packages offering a variety of colors within one package. All tissue within these packages are quire fold 20" x 30" sheets.

CATEGORY	SATINWRAP ITEM NO.	PK WT	DESCRIPTION	SHEETS / INNER	INNERS PER CASE
Assortment	2030BK/WT	5	BLACK & WHITES	240	4
	2030RSGOLDASSORT	15	ROSE GOLD ASSORTMENT	200	4
Popular	2030POP	7	POPULAR PACK 5R	480	5
	2030SPR	7	SPRING PACK	480	5
Retail Assortment	1520RETASST	7	RETAIL THERAPY	200	8

WHITE TISSUE

White tissue has neutral pH.

DESCRIPTION	INNER/CS	ITEM CODE	SHT / INNER
20" x 30" flat 2 ream wrap [10 rm/cs]	5	WTP2030	960
20" x 30" quire fold 1 ream wrap [5 rm/cs]	5	2030WQF	480
18" x 27" flat 2 ream wrap [10 rm/cs]	5	1827WHITE	960
15" x 20" flat 2 ream wrap [20 rm/cs]	10	WTP1520	960
20" x 30" flat recycled white tissue [5 rm/cs]	5	2030RWHT	480

RECYCLED KRAFT

100% recycled fibers, 10% pc content, 10# basis weight.

DESCRIPTION	INNER/CS	ITEM CODE	SHT / INNER
20" x 30" kraft flat 2 ream wrap (10 inners/case)	5	2030RKFT	960
20" x 30" quire fold 1 ream wrap (5 inners/case)	5	2030KQF	480
15" x 20" recycled kraft flat 2 ream wrap	10	1520REC	960

CATEGORY LEVELS FOR DECORATIVE TISSUE

Satinique Tissue, Gemstone Tissue, All Occasion Tissue, Precious Metals, Pearlescence Tissue, Season's Greetings, Botanicals Tissue.

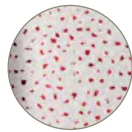
CATEGORY LEVEL	INNER WT
A (240 Sheets/Inner)	5
B (200 Sheets/Inner)	4
C (200 Sheets/Inner)	4
D (100 Sheets/Inner)	4
E (200 Sheets/Inner)	4
F (200 Sheets/Inner)	4
G (200 Sheets/Inner)	4

SATINIQUE TISSUE

These may be purchased in full case lots or by individual packs. Packed four packages per case. 20" x 30" Soft Fold Tissue.



EM1001SILVER (E) 🏠
Embossed Silver Linen



HS1001 (C)
Red



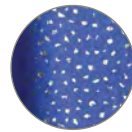
HS1002 (C)
Gold



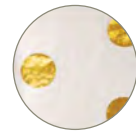
HS1004 (C)
Silver



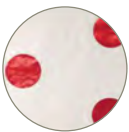
HS1008 (C)
Red on Red



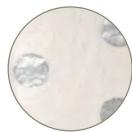
HS1009 (C)
Silver on Blue



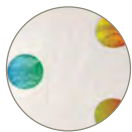
HS1010 (C)
Gold Hot Spots



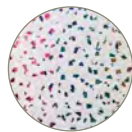
HS1011 (C)
Red Hot Spots



HS1012 (C)
Silver Hot Spots



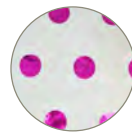
HS1014 (C)
Rainbow Hot Spots



HS1015 (C)
Rainbow Reflections



HS1016 (C)
Black on Black
Hot Spot



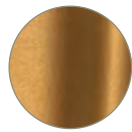
HS1017 (C)
Pink Hot Spots

PRECIOUS METALS TISSUE

20" x 30" soft fold tissue.



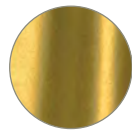
0041SIL (B)
Silver 1 Sided



0045COP (B)
Copper 1 Sided



0075BRT (B)
Gold 1 Sided



0198GOL (B)
Gold Leaf 1 Sided



0220SIL (B)
Silver/Gold Celebration



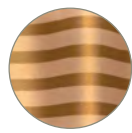
0224GOL (A)
Gold Stars



0231ELE (B)
Elegance



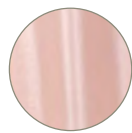
0232FLE (A)
Fleur De Lis



0272GOL (B)
Gold Stripes



0327SIL (A)
Silver Stars



0354RGD (B)
Rose Gold Tissue



0367BST (B)
Metallic Brush Strokes



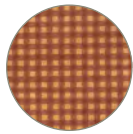
0957SIL (D) 🏠
Silver 2 Sided



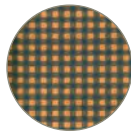
0965GOL (D) 🏠
Gold 2 Sided

ALL OCCASION TISSUE

20" x 30" soft fold tissue.



0022RKG (A)
Red Gingham



0023GKG (A)
Green Gingham



0143BAB (B)
Baby Prints



0184DRA (A)
Dragonflies



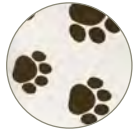
0185ZEB (A)
Zebra



0196LEO (B)
Leopard



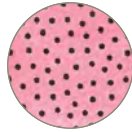
0199BLK (A)
Black Toile



0210PUP (A)
Puppy Paws



0221CON (A)
Contemporary Hearts



0247SPE (A) 🕒
Speckled Raspberry



0248SPE (A)
Speckled White



0250NEO (B)
Neapolitan Dots



0255FAS (B)
Fashion Lines



0256ISA (B)
Island Dots



0341BLA (A)
Black Dots on White



0342WHI (A)
White Dots on Black



0343BLA (A)
Black Stripes on White



0344SPO (B) 🕒
Spot On



0345SPO (B)
Confetti Dots



0349AWN (A)
Awning Stripe



0350PEA (B)
Peacock



0351VID (A) 🕒
Vidalia



0357GMA (B) ⚠️
Grandma's Kitchen



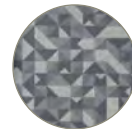
0358WIN (B)
Wine Not



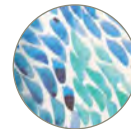
0359OLD (A) 🕒
Olde World



0360LOT (B) 🕒
Lotsa Dots



0361PRI (B) 🕒 ⚠️
Prismatic



0362SEA (B)
Sea Glass



0364BMW (B)
Black Marble



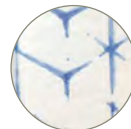
0365GMI (B)
Gold Marble on Ivory



0369SAFPARK (B) 🕒
Safari Park



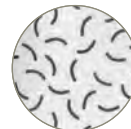
0370MEDDOTS (B) 🕒 ⚠️
Mediterranean Dots



0371SHIBORI (B)
Shibori



0372RODEO (B)
Rodeo Drive



0377SQUI (A) 🕒
Squiggles



0378EMOJI (B) ⚠️
Emoji



0379NIGHT (B)
Night Sky



0384TERA (B)
Terazzo



0389BEH (B)
Be Human



0390COZY (A)
Cozy Comfort Plaid



0392OMB (B)
Pink Ombre



0393VIN (A)
Vintage Damask

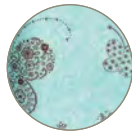


BOTANICALS TISSUE

20" x 30" soft fold tissue.



0107BIR (A)
Birds Nest



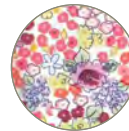
0286BUT (A) 🕯️
Butterflies



0305PUR (B)
Purple Passion



0309FLO (B)
Floral Lines



0325LIB (B) 🕯️
Liberty Bloom



0337FLO (B)
Flowers at Large



0352COT (B)
Cottage Rose



0353WED (B) 🕯️
Wedgewood Blossoms



0363TRO (A) 🕯️
Tropical Mist



0376WAT (B)
Watercolor Floral



0385BBLOSS (A)
Backyard Blossoms



0386EUCA (B)
Eucalyptus



0388CAN (A)
Cannabis



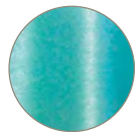
0391BLOOM (B)
Bloom Field



0394SUN (B) 🕯️
Sunflower

PEARLESENCE TISSUE

20" x 30" soft fold tissue.



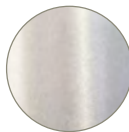
CRY1001 (E)
Bright Turquoise
1 Sided



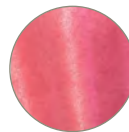
CRY1004 (E)
Scarlet 1 Sided



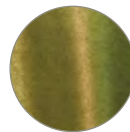
CRY1007 (E)
Black Brass 1 Sided



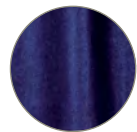
CRY1008 (E)
White 1 Sided



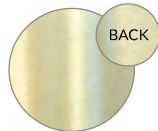
CRY1009 (E)
Cerise 1 Sided



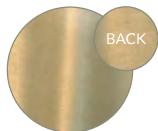
CRY1010 (E)
Green Tea 1 Sided



CRY1012 (E)
Midnight Blue 1 Sided



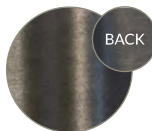
CRY2000 (F)
Champagne 2 Sided



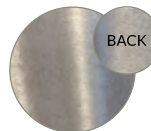
CRY2001 (F)
Sun Gold 2 Sided



CRY2002 (F)
Antique Gold 2 Sided



CRY2003 (F)
Antique Silver 2 Sided



CRY2004 (F)
Pewter 2 Sided



CRY3000 (G)
Bronze 2 Sided



CRY3001 (G)
Copper 2 Sided

SEASON'S GREETING TISSUE

20" x 30" soft fold tissue.



0230PEA (B)
Pearl/Silver
Snowflakes



0298SEA (B)
Season's Greetings
Snowflakes



0321TOT (A) 🕯️
Total Holly



0338PRE (B)
Presently Plaid



0356PEP (A)
Peppermint Stripes



0368HHDT (B) 🕯️
Happy Holly Days



0375PLAID (B)
Perfectly Plaid



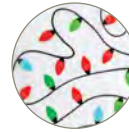
0380SPI (A)
Spiraling Snowflakes



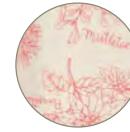
0381BUF (B)
Buffalo Plaid



0382CLA (A)
Classy Flakes



0383LPAR (B)
Light Parade



0387WIN (A)
Winter Topiary

GEMSTONE TISSUE

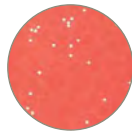
20" x 30" soft fold tissue.



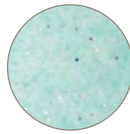
GS1000RSGLD(B)
Rose Gold on Blush



GS1001 (B)
White Diamond



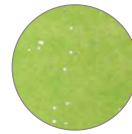
GS1002 (B)
Ruby



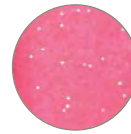
GS1003 (B)
Aquamarine



GS1004 (B)
Onyx



GS1005 (B)
Peridot



GS1006 (B)
Hot Pink Sapphire



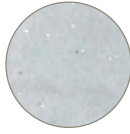
GS1008 (B)
Citrine



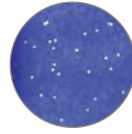
GS1009 (B)
Blue Topaz



GS1010 (B)
Amethyst



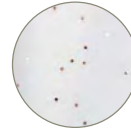
GS1011 (B)
Granite



GS1012 (B)
Blue Sapphire



GS1013 (B)
Gold Dust



GS1017RSGLDWHT(B)
Rose Gold on White



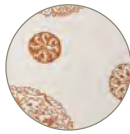
GS1018 (B)
Gold Gemstones
on White



GS2000 (B)
Diamond Snowflakes



GS2001 (B)
Gold Pearl Trees



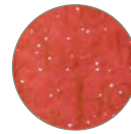
GS2003 (B)
Medallions



GS2005 (B)
Just Snowflakes



GS2006 (B)
Noel



GS2008 (B)
Ho Ho Ho



GS2009 (B)
Frosty's Face



GS2010 (B) 🏠
Rose Gold Trees on Pink

COLORED WAXED TISSUE

20" x 30" flat sheets, 250 sheets per package, 5 inners per case.



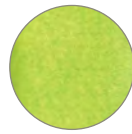
WAXEBLK



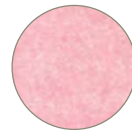
WAXEBUT 🏠
SPECIAL ORDER



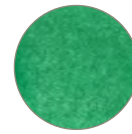
WAXECER



WAXECIT



WAXEDKP 🏠
SPECIAL ORDER



WAXEKEL 🏠
SPECIAL ORDER



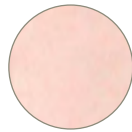
WAXEKHA



WAXEKFT



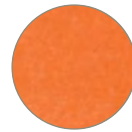
WAXELAV



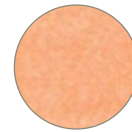
WAXELTP



WAXEOLV



WAXEORA 🏠
SPECIAL ORDER



WAXEPEA



WAXESCA 🏠
SPECIAL ORDER



WAXEWHT 🏠
SPECIAL ORDER



WAXEYEL 🏠
SPECIAL ORDER

SWIRL INDUSTRIAL SPIROPACK

This SpiroPack spiral tissue paper void fill is a unique and innovative alternative to traditional crinkle fill and packing peanuts. SpiroPack’s patented flat design takes up 80% less space on your packing station than crinkle shred. The connected spiral design allows for easy packing during fulfillment and easy cleanup for consumers during unboxing.



-  BLACK
[SPIROBLACK]
-  KRAFT
[SPIROKRAFT]
-  WHITE
[SPIROWHITE]
-  RED
[SPIRORED]
-  CERISE
[SPIROCERISE]
-  FRENCH VANILLA
[SPIROFRENCH]



CATEGORY

KRAFT - INNER CARTON (2 ROLLS)

WHITE - INNER CARTON (2 ROLLS)

COLORS - INNER CARTON (2 ROLLS)

SLIVV SLEEVES







100% recycled paper transport sleeves that deliver a renewable protective alternative to plastic bubble wrap. Innovative honeycomb design stretches and adapts its shape to the product. 6 packs of 100 each per box. *AVAILABLE UPON SPECIAL ORDER ONLY.



ITEM CODE	SIZE	CS PK
SLIVVMINI	2.4 x 9.4	150
SLIVVPRO	3 x 11.8	100
SLIVVMEGA	3.9 x 13.4	100

ROLLED TISSUE

Heavy duty packing paper in bright colors. 20# paper counter rolls. Approximately 1,800 ft per roll. *AVAILABLE UPON SPECIAL ORDER ONLY.

-  BLACK [BLK]
-  CERISE [CER]
-  CITRUS GREEN [CIT]
-  LIGHT GRAY [LTG]
-  PARADE BLUE [PAR]
-  WHITE [WHT]
-  KRAFT [KFT] - TIS1803KFT ONLY










ITEM CODE	SIZE	DESCRIPTION
TIS1803KFT	18"	BLACK
TIS1803[...]	18"	COLOR
TIS2403BLK	24"	BLACK
TIS2403[...]	24"	COLOR

FLAT PACKED TISSUE SHEETS

Heavy duty packing paper in bright colors. 20# paper counter sheets. *TIS2030[...] is available in [NAT] and [WHT]. 15# paper counter sheets. **AVAILABLE UPON SPECIAL ORDER ONLY.



-  BLACK [BLK]
-  BLUSH [BLU]
-  BUTTERCUP [BUTT]
-  CERISE [CER]
-  CITRUS GREEN [CIT]
-  LIGHT GRAY [LTG]
-  NATURAL* [NAT]
-  PARADE BLUE [PAR]
-  SCARLET [SCAR]
-  VANILLA [VAN]
-  WHITE* [WHT]

ITEM CODE	SIZE	SHEET PK	DESCRIPTION
TIS1824BLK	18 x 24	1400	BLACK
TIS1824[...]	18 x 24	1400	COLOR
TIS2436BLK	24 x 36	700	BLACK
TIS2436[...]	24 x 36	700	COLOR
TIS2030[...]*	20 x 30	1400	COLOR

CUSTOM TISSUE

Custom printed wrapping tissue is the most cost-effective form of advertising. Accentuate your brand, image, or special promotion with tissue paper printed 1 to 6 colors on white, kraft, or any of the SatinWrap solid colors* (including Gemstones and Pearlescence Tissues).

Production Time: 4-6 weeks after proof approval
 Imprint Colors: PMS color match
 Art Requirements: Vectorized PDF, EPS or Adobe Illustrator

Plate Charge: Subject to review of art
 Metallic Ink: Add 5%
 Ink Coverage: 25% or less, non-metallic ink

Custom Printed Tissue, 1 color, 1 side, 480 sheets/inner
 (Pricing per inner)

1 PMS COLOR	10 INNERS	20 INNERS	30 INNERS
-------------	-----------	-----------	-----------

White/Kraft

Colors*

CALL FOR QUOTE

*Limited colors available for 10 inners: Black, Buttercup, Cabernet, Cerise, Citrus Green, Claret, Evergreen, French Vanilla, Holiday Green, Ivory, Khaki, Lavender, Midnight Blue, Olive, Orange, Parade Blue, Purple.

*Larger quantity breaks available by special request.

COLOR PRINTING REAM MINIMUMS:

1-color printing for 10 inners.
 2-color printing for 30 inners.
 3-color printing for 50 inners.
 4-color printing for 70 inners.
 5-6 color printing for 100 inners.

In addition, we offer the following specialty items:
 Custom printing on "Precious Metals": Min. 30 inners
 Custom printing on "Pearlescence": Min. 50 inners
 Custom printing on "Gemstone": Min. 20 inners

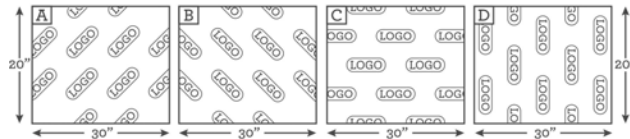
QUOTING REQUIREMENTS

1. Tissue Color
2. PMS Ink Color(s)
3. Ink Coverage (%)
4. Finished Sheet Size
5. Quantity of Inners Required
6. How Inners will be Packaged

FOB:

Mill (Gardner, MA 01440)

or Delivered (if delivered, please supply City, State & Zip)



ART REQUIREMENTS AND PROOFING:

We are glad to accept your digital artwork via disk, email or courtesy of an FTP site. All art should be vectorized, in either PDF, EPS or Adobe Illustrator format, and should have a minimum resolution of 300dpi.

If supplying a finished layout, please be sure that it is made to the following specifications: 20" wide x 18" repeat. (Feel free to contact your Customer Service Representative with any questions).

If supplying a single (1-up) logo, please be sure to confirm the following:

1. Logo size
2. Spacing (between logos in the same row)
3. Spacing (between rows)
4. Design direction (see options A, B, C or D shown to the left)

CUSTOM DESIGN CENTER

We offer complete custom design services for bags and tissue paper. We can craft a bag to almost any imagination. From euro totes, non-woven, paper, and poly bags, we've done it all! Follow these steps to begin:

1) Determine the Bag Size and Features

Dimensions and features the client is looking for is imperative. We can create a bag in any size but knowing the intended use will make this process easier. Determine if your client needs any additional elements including closures, pockets, special handles, piping, etc.

2) Choose the Materials

We can build a bag using non-woven polypropylene, paper, or plastic based upon your client's needs and budget. We are also able to accommodate many different custom handles from twisted paper to ropes, ribbons, and plastic.

3) Prepare the Artwork

The artwork for the bag is by far the most important and will make the most impact. We accept art files in the forms of PDF, EPS, and AI Files. All files must be vector artwork. Please consult our general art guidelines for more details.



HOT STAMP

HOT STAMP PRICING

CODE	PRICES PER BAG 1 COLOR / 1 SIDE	MINIMUM TO PURCHASE
A	Paper / Poly / Euro Bags / Vela Tissue Bags / Pillow Boxes	2 cases / per bag size
B	Gift, Jewelry, Apparel, & Purse Boxes / Designer Pockets and Folders	2 cases / per box size
C	Reusable Bags (Limited Foils)	2 cases / per bag size
D	Corrugated Mailer Boxes	4 bundles / per box size (100 pieces)

ADDITIONAL INFORMATION

- For each additional color or side, duplicate the price in chart above.
- Bags using the same plate may be combined for total bags.
- Please note we do not break cases.
- Foil Color Change Fee *
- Please read through our General Terms and Conditions for more information regarding imprinted items.
- Customers are responsible for collecting copyright or trademark authorizations.

FLAT PLATE COST

Please add 1" to height and width of your image and multiply together. For 2 color jobs, each color will require a separate plate. To calculate the cost of the plate for each color, separate art first and measure each individual color image separately.

*Plate sizes larger than 120" are Premium sizes and include additional charges.



FOIL COLORS

Please order by number and name listed. PMS matches are not available on hot stamp foils. Allow 1/8" movement for multiple color registration; additional plate cost will be incurred for each color. ★ Foil colors that will hot stamp on Non-Woven Bags.
 *Shimmer foils not available for poly products.



185
Clear



111 ★
Matte White



108 ★
Metallic Silver
Close to PMS 877



109 ★
Matte Silver



157
Matte Gray
Close to PMS 431



131 ★
Metallic Graphite
Close to PMS BLK7



132 ★
Metallic Black



119 ★
Matte Black



101 ★
Matte Gold
Close to PMS 871



100 ★
Metallic Gold
Close to PMS 871



176
Matte Taupe
Close to PMS 400



159
Metallic Champagne
Close to PMS 7530



115
Matte Brown
Close to PMS 161



138
Metallic Brown
Close to PMS 161



116 ★
Metallic Copper
Close to PMS 876



117
Matte Copper
Close to PMS 876



180
Rose Gold
Close to PMS 8042



145
Matte Pink
Close to PMS 196



184
Caribbean Pink
Close to PMS 1905



181
Matte Bubblegum
Close to PMS 223



152
Plum Shimmer
Close to PMS 241



148
Metallic Light Pink
Close to PMS 7430



122
Dark Pink
Close to PMS 205



110 ★
Metallic Fuchsia
Close to PMS 252



103
Matte Red
Close to PMS 186



154
Garnet Shimmer
Close to PMS 200



102 ★
Metallic Red
Close to PMS 187



118
Matte Cabernet
Close to PMS 188



135 ★
Metallic Cabernet
Close to PMS 188



143
Candy Apple Red
Close to PMS 200



114
Matte Purple
Close to PMS 268



178
Purple Shimmer
Close to PMS 527



182
Matte Eggplant
Close to PMS 7672



130 ★
Metallic Purple
Close to PMS 2627



141
Metallic Lavender
Close to PMS 2715



106
Blue Shimmer
Close to PMS 7453



183
Cyan
Close to PMS 631



133 ★
Metallic Navy
Close to PMS 294



113
Matte Navy
Close to PMS 2955



158
Aqua Marine Shimmer
Close to PMS 320



129
Metallic Teal
Close to PMS 322



175
Matte Turquoise
Close to PMS 326



128
Metallic Lime
Close to PMS 369



161
Forest Shimmer
Close to PMS 349



107
Metallic Green
Close to PMS 3415



134
Metallic Dark Green
Close to PMS 554



172
Forest Green
Close to PMS 3292



120
Matte Dark Green
Close to PMS 533



149
Buttercream
Close to PMS 7402



177
Matte Lemon
Close to PMS 107



139
Matte Yellow
Close to PMS 1235



144
Matte Orange
Close to PMS 1575



156
Pumpkin
Close to PMS 179

FLEXO-INK

FLEXO-INK PRICING

CODE	PRICES PER BAG 1 COLOR / 1 SIDE	MINIMUM TO PURCHASE
A	Paper / Poly / Euro Bags / Vela Tissue Bags / Apparel Boxes	2 cases / per bag size

2 COLOR IMPRINT ON ALL SIZES, 3 & 4 COLOR IMPRINTS ON 10X13 SIZES & ABOVE

All multicolor print orders under 1,000 bags must use individual color pricing listed in chart above.

NUMBER OF COLORS	MINIMUM 1,000 / PER BAG SIZE - 2,800 BAGS	3,000+ BAGS
2 colors	CALL FOR A QUOTE	
3 colors		
4 colors		

- Ink price listed is per bag / per side on multicolor prints. Prices include total ink charge per bag.
- Each color will need its own individual plate.
- For double sided printing, add a flip the flap charge per 1,000 bags. (Must see art)
- Valid on paper shopping bags, merchandise bags and poly mailers.

FLAT PLATE COST

Please add 1" to height and width of your image and multiply together. For 2 color jobs, separate art and then measure to find cost of each color.

MISCELLANEOUS CHARGES

- Metallic Ink Charge (Price Per Lot / M) *
 - Custom Ink Charge (Flat Fee) *
- *CALL FOR MORE DETAILS ON FEES AND CHARGES

ADDITIONAL INFORMATION

- Please read through our General Terms and Conditions for more information regarding imprinted items.
- Customers are responsible for collecting copyright or trademark authorizations.



211
White



208
Metallic Silver
PMS 877U



219
Black



200
Metallic Gold
PMS 872U



216
Metallic Copper
PMS 875U



215
Brown
PMS 490U



218
Maroon
PMS 208U



203
Red
PMS 199U



235
Cabernet
PMS 235U



222
Rhodamine Red



214
Purple
PMS 526U



241
Periwinkle
PMS 535U



258
Aqua
PMS 3125U



206
Blue
PMS 299U



286
Reflex Blue



213
Navy
PMS 294U



229
Teal
PMS 322U



261
Evergreen
PMS 343U



228
Lime
PMS 376U



251
Ecogreen
PMS 382U



236
Sage
PMS 5565U



237
Olive
PMS 5815U



277
Sunflower
PMS 121U



244
Orange
PMS 165U

ORDER INFORMATION

Purchase Orders - All orders must be submitted as an attached document (PDF, Word, Excel) via e-mail to ensure accuracy and are subject to approval. Any scanned orders must be legible. Please have the PO number in the subject line & attach artwork. (See Artwork guidelines on pages 62-63 for more information on artwork submissions).

Please include as much information as possible, as orders can be delayed due to missing information (shipping address & account number (if third party or collect), item code, size & color, imprint type & color (if needed), any rushes, promo codes to be used, etc.).

Different sizes of bags using the same plate can be combined for print and hot stamp lot charges.

Please be advised that case breaking is not available and orders must in full case quantities.

For plain stock, the minimum order quantity is 1 case.

For Post Printed items, the minimum order quantity is 2 cases per item. (We can accommodate only imprinting one case, but a "One Case Fee" will need to be added per bag size/per order).

We will acknowledge every purchase order received in writing prior to production. Please review your acknowledgement carefully and contact us immediately if you see any discrepancies. (If changes need to be made, please refer to the "Cancellations and Changes" section below).

Pricing is subject to change at our discretion, and any pricing changes will be sent via e-mail.

Any pricing quotes will be sent in writing via email. Pricing quotes given over the phone are not valid and will not be honored.

For any new customers, you will need to be fully set up in our system before we process your purchase order. (See Payment & Credit terms section).

Changes and Cancellations - All changes to orders or cancellations of orders, must be in writing via e-mail and will not be honored unless it's acknowledged by Packaging Solutions. An updated purchase order document may need to be submitted for major changes.

Any changes made to an order may delay production & shipping and can only be accepted if the order has not begun production.

Changes or cancellations after acknowledgement are subject to all incurred costs including artwork, set up, plate charges, and any already produced bags.

If a plate was created before a cancellation was sent in, we will keep the plate on file here at Packaging Solutions unless it is specifically requested for the plate to be shipped to the customer or distributor.

Additional Fees - For Flexo-ink orders, Metallic ink charge is per 1,000. Custom Ink charge is per color per order.

Foil/Ink Change Fee is per extra color per order. One Case Fee is per size only imprinting 1 case/per order.

Plate Information - Due to normal wear and tear of plates, Hot Stamp and Flexo-ink plates may need to be repurchased by the customer & remade if they are deemed

unusable by our Production Department.

Plates are only kept on file for 3 years. After 3 years they will be discarded or recycled. All Flexo-Ink & Hot Stamp orders that have not been reordered in 3 years and plates have already been discarded will require artwork to be sent to create new proofs and new plates.

Plates are kept on file here at Packaging Solutions and will not be shipped to a designated party, unless otherwise stated, even if an order is cancelled after plates are created (see Cancellation section below). Plates can be requested to ship to the customer or distributor for a Plate Return Fee.

Any plates produced during a free plate promotion remain the property of Packaging Solutions. Customers or distributors may request these plates to be shipped to them; however, the plate must be purchased at that time and will be subject to both the plate cost and the applicable Plate Return Fee.

Post-Dated Orders - Post-dated orders are scheduled to ship on the specified future date of your choosing. These orders will begin production in time for that designated shipping date.

However, if you or your customer needs the order earlier than planned, please notify us at least 10-15 business days prior to the newly requested shipping date to allow us to adjust production.

Requests made fewer than 10 days before the desired shipping date may require a rush production fee to meet the updated timeline. Without sufficient lead time, we may not be able to accommodate expedited production without these additional fees.

Returns - Only plain, non-imprinted bags may be returned for credit. We must be notified and a return authorization number assigned within 30 days of the shipment date. A 20% restocking fee will be applied as well as all original freight and return freight charges incurred.

We will issue return labels to get the items back. The return will be processed within 2-3 business days. The email with the return labels will come from UPS directly. Any old UPS/shipping labels need to be removed from the packages. The return labels will only be valid for 1-2 weeks (the label instructions will indicate the validity timeframe). Once the return labels are affixed to the returning cases, they can then be given to the customers usual UPS driver or dropped off the nearest UPS location.

Packaging Solutions will not issue a credit until the product has been returned to our warehouse in the original packaging & it must be in a resellable state. We may ask for samples to be returned for inspection prior to authorization.

Inventory Availability - All orders are subject to acceptance based on inventory availability at the time. We cannot be held responsible for any inability to ship orders due to stock shortages & the order will not be cancelled until we receive a cancellation request in writing.

Orders that can be partially shipped will have the remaining amount placed on back-order and will not be cancelled until we receive a cancellation request in writing. Once product has been replenished, we will fulfill any back-ordered orders.

Payment & Credit Terms - New customers must complete a New Account Set Up Form and provide Resale Certificates (Uniform sales & tax form) for each state you are set up to resell our products.

New & existing customers wanting to establish credit terms (Net 30 days) must complete a Credit Application and provide credit references. Please allow 1-3 weeks for the credit application process, and please make sure your information on your application is correct for your references to ensure the application is processed in a timely manner. Packaging Solutions is not responsible for delays if contact information is wrong, or if your references do not reply in a timely manner.

All orders paying by Credit card will be processed but not go into production and will not be released to ship prior to payment being received.

We do not charge fees for Credit card payments, but we only accept Visa & Master Card. We do not take payments over the phone or through email for security reasons and to ensure your information stays safe. Any payment request will be sent via email from our Accounting Department via a link.

A Late Payment Fee charge of 1.5% per month will be added to any outstanding balances that have not been paid within the payment terms.

SHIPPING INFORMATION

FOB Carrollton, TX 75006

Any delivery dates are estimates, not guarantees. Packaging Solutions is not liable for late deliveries.

Small Package Shipments – Please specify any in-hands dates or preferred shipping method/carrier on your purchase order. If no account information is provided, we reserve the right to determine shipping methods for your orders to meet your in hands date.

Daily pick-ups are scheduled for UPS & FedEx. (See Transit maps on [page 61](#) for standard ground transit times). Other carriers will have to be scheduled for the next possible business day.

Addresses must be classified as Residential or Commercial. We will not be responsible for any extra incurred fees due to incorrect classifications, and we reserve the right to send additional invoices for any extra incurred fees after the invoice is sent.

Third Party & Receiver (Collect) Shipments

If you supply a carrier account, please specify if the account is a Third Party or a Receiver's account to ensure correct billing. We also need a valid/active account number with the account holder's name, complete billing address, & phone number.

All shipments sent on customer shipping account numbers (3rd party or collect) will incur a handling charge per shipment.

If a shipment is using a third party or received/collect, we will not be responsible for any lost or damaged goods or designated carrier delays. Any claims will need to be made by the account holder as we will not be able to make claims on the account holder's behalf.

LTL Freight & Truck Shipments - Any needed accessorial charges (Inside delivery, lift gate, residential/limited access deliveries, appointment deliveries, COD, redeliveries, & special deliveries) will incur additional fees wrapped into the shipping quote. PSI is not responsible for the rates that each shipping company charges for any accessories.

Any accessorial needs must be stated on the purchase order, quote request, or in writing via email.

If accessories are not provided but are later deemed required and added by the third party trucking companies, Packaging Solutions has the right to submit additional invoices after the original invoice is sent if necessary for the additional surcharges and extra charges.

International Shipments - Any shipments outside the U.S. including Alaska, Puerto Rico, Hawaii and the Caribbean must be shipped via a third-party account. All duties and taxes will be charged to the third-party shipper account provided.

A commercial invoice must be provided to us prior to shipment.

Customer Pick Up - Customer pick up or customer arranged pick-ups must be picked up within three weeks (15 business days) of being notified that it is ready for shipment to avoid incurring storage fees (see storage fees section).

The person or carrier picking up the order must provide the PO number and the company name for the shipment to be released.

If trying to arrange pick up for a plain stock order placed the same day, the order must be submitted before 12pm central time to be available to be picked up the same day if on terms.

If paying by credit card, any Customer Pick Up Orders will not be released until payment has been received.

Storage Fees - For all orders (Plain, Post Printed, or Custom), any completed order stored at our facility for more than 15 business days will incur a Storage Fee of \$20 per day. This fee applies to delays due to various circumstances, including but not limited to: awaiting receipt of a Bill of Lading (BOL), awaiting customer pickup, pending payment required for shipment release, awaiting corrected shipping information, or other similar situations.

Split Shipment - A split shipment charge will apply for each additional ship-to address, up to (4) addresses. For split shipments to five (5) or more addresses, PSI will process the order as separate sales orders and issue separate invoices.

Shipping Quotes - Any shipping estimates given before a purchase order is sent to Promo PSI is only informational and is subject to change.

Small package shipments & LTL Freight quotes will always be sent in writing via e-mail & estimates given over the phone are not valid.

Quotes are only valid for 5 business days. All special requirements (lift gate, residential, appointments, inside delivery, etc) must be provided at the time a quote is requested.

Claims for Incorrect, Misprinted, Defective Items

- Any claims for incorrect, misprinted, or defective merchandise must be made within 30 business days of receipt of order.

If your order is incorrect, misprinted, or defective, all supporting information must be sent to the customer service department along with multiple pictures. Packaging Solutions reserves the right to request the items be brought back for inspection before any credits, refund, or reprints are issued.

If items are brought back for inspection, but the items are deemed acceptable by PSI, the invoice will need to be paid in full, along with any return and reshipment fees to send the merchandise back to the customer.

Claims for Damaged Items - All shipments must be checked immediately upon arrival. Any visible damaged must be written on the bill of lading or documented by the shipping company by both the driver and receiver.

Any claims for damaged merchandise must be made within 30 business days of receipt of order if shipped via Prepaid & Add.

If products are damaged during shipping, the customer must let the carrier know of the damages prior to accepting the shipment and take pictures for claims purposes. All damaged items must be kept by the customer until the claims process is complete.

Additional Shipping Information - Packing

Lists will not automatically be provided. If a Packing List is needed, you need to request it on your purchase order, or you can provide one. We are not responsible for any pricing discrepancies for additional surcharges and extra charges added on by third party trucking companies.

Double-check the address before submitting your order. Any address correction fees will be automatically submitted as an additional invoice if the address was submitted incorrectly to Packaging Solutions.

We have the right to submit additional invoices after the

original invoice is sent or any extra fees, freight, duties, & taxes as necessary. These invoices will be dated to match the original ship date of the order.

Weights listed in our catalog are approximate weights per case. We cannot be responsible for variances in actual freight costs versus freight quotes.

PRODUCTS & PRODUCTION

Product Information - Item dimensions may vary +/- .5" to 1". Although we strive for consistency in color, some color variations may occur as a result of factory production lots.

Due to different viewing screens, product photos and color swatches in this catalog are approximate.

Plain & Post Printing Production Information

- Plain unprinted orders are shipped within 24-48 hours purchase order receipt (or after payment receipt if not on credit terms).

Hot Stamped & Flexo-Ink Printing orders lead times is 10-15 business days and begins after digital proof approval (or payment receipt if not on credit terms) for quantities of 6,000 or less. For more than 6,000 impressions, contact the customer service team for a lead time quote.

Rush Services are available for Hot Stamped & Flexo-Ink Printing orders under 3,000 impressions. Rush lead time will begin after proof approval (or payment receipt if not on credit terms).

7 working days = 10% of total order

5 working days = 20% of total order

4 working Days = 30% of total order

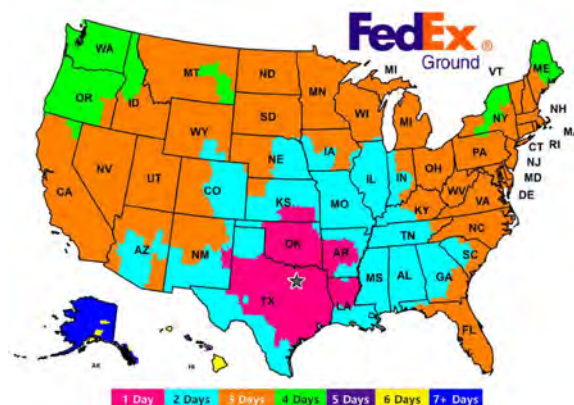
3 working Days = 50% of total order

Pre-Production Press proofs are available for a fee plus the cost of plates and art charges (if any).

A Plate Return fee will be charged per transaction requested.

Please allow for extra days for larger orders that require LTL Freight carriers to be scheduled. Packaging Solutions is not responsible for delays due to carriers picking up.

Custom Overseas Orders - Custom overseas orders are available. Minimums vary based on bag type and size. Custom orders not placed in over a year require a proof for artwork verification. If there is any discrepancy in the order details that raises concerns about the artwork, a proof will also be required. Custom orders may require a prepayment based on credit terms. Please call your sales representative for more details. Please note, orders placed (and orders still in process) in January and February may run into the Chinese New Year holiday and may have longer lead times.



Custom Insignia Orders - Bag dimensions may vary +/- 1/8" to 3/8". Although we strive for consistency in size, some size variations may occur.

Ink drawdowns will be ordered after proof approval for custom PMS colors. Drawdowns must be approved before production begins. Ink variance is normal during production.

In the event an ink drawdown approval is waived, Packaging Solutions assumes no liability for color variation. Final ink color approval shall be determined at the sole discretion of Packaging Solutions.

Overall Production Lead time is 6-8 weeks (depending on bag sizing) if no unforeseen delays and starts after ink drawdown approval is received.

Disclaimers - All orders are subject to product and production material availability. We are not liable for non-fulfillment of orders due to product shortage, delays due to strikes, customs, shipping, weather or any other unforeseen circumstances beyond our control.

10% over run / under run is acceptable in our industry. All overruns are subject to invoicing.

ARTWORK & PROOFS

Artwork Submission - All artwork, copy, logo size, and bag layout are subject to our approval.

We require vector artwork for all orders. Acceptable file extensions: .ai, .eps, and .pdf. Other file types or images may be acceptable if the file size is large enough, but will be subject to pre-approval by the art department.

Content inside the artwork file must be vector graphics. All fonts need to be converted to outlines, and any strokes must be expanded.

We recommend that you send us a copy of your artwork prior to submitting an order so that we can determine if we can print the artwork on the product that you would like.

Artwork sent via e-mail must reference the purchase order number in the subject line if not sent with the purchase order. On orders with multiple colors, please indicate color breaks on your artwork. We will not store digital artwork for longer than a 3 year period.

We prefer to not add websites, addresses, or make major changes since we are not in direct contact with the end user. If any charges besides resizing is wanted, it's best that you send a revised art file to the art department, otherwise art changes may be added to the order.

Full Artwork Recreation, or artwork that takes longer than 15 minutes to clean up, will incur art changes per quarter hour & will be added to the purchase order.

Trademarks, Copyright, & Use of Logos - All artwork & logos with or without trademarks, copyrights, and registration marks are shown in this catalog to demonstrate our post-printing capabilities and are not for sale. Any imprints in this catalog are for illustrative purposes only.

By placing an order with us, you represent and warrant that you have all the necessary permissions, rights and authority to place the order and you authorize us to print the artwork/logo received on your behalf. You grant us the right to copy, modify, distribute, and create vectorized content you send for the purpose of fulfilling your order and/or marketing products or services to you. Moreover, you represent and warrant that you have sufficient rights to permit us to copy, distribute, use, modify, the artwork for the purpose of fulfilling your order and/or marketing products or services to you.

Proofing - PDF versions of proofs will be sent to you via e-mail. Approved proofs must be signed and sent back to our art department for the lead time to begin. Placement of the artwork is approximate.

We will proof up to 2 proofs per order; for more than 2 proofs there will be a charge per proof.



Example of heavy ink coverage on large area.

Imprint Disclaimers - Ink or foil that is close to (or similar to) the same color of the bag being used, may not be visible.

Large areas of heavy coverage can appear patchy and uneven due to the crease from the gusset flap.

Text must be a minimum font size of 9 points to print legibly. (Some fonts may need to be bigger, depending on the areas inside letters, or if letters are too thin. Smaller sizes may have fill in, not print, or be illegible.)

Some artwork may need a white space placed in-between different pieces, to help with readability of the artwork.

Reversed out areas, small details, and tiny type may experience fill in. Thin lines & text may have to be adjusted and made thicker for visibility on the actual plate itself.

Registration marks and Trademarks may need to be adjusted to be visible, or to not have fill in.

Gradients and/or areas at less than 100% opacity (screens) will print as dots, not as a lighter color. The DPI (dots per inch) frequency will depend on the artwork. Any small details will not be visible as dots, and text may not be legible. Solid text laid over a screen may need white space added around to help with readability.



Digital artwork with varying levels of opacity.



Image as it would appear once printed with the screens.

Registration Tolerance- For Hotstamp Imprinting, as much as 1/8th of an inch of artwork shifting in any direction in the possible due to manual feeding.

For Flexo Ink Printing, as much as 3/8ths of an inch of artwork shifting in any direction in the is possible due to manual feeding.

Multicolor orders have a registration tolerance for each color as the imprint type as above in any direction.

Placement - Unless otherwise stated, the logo will be placed center best on the product and sized to fit in the Max Imprint Area.

Our production team will center the art as much as possible, but logos may be shifted slightly to help alleviate issues with the crease, fold, handle area, or sizing of the product.

Centering will be based off the image as a whole, so if placement needs to be based off the something specific and not the full image, we need to know before proofing or production.

Two-sided printing may be affected by the crease and fold of the bags, so the positioning may not be placed exactly center best on one or both sides.

Minimum placement on most products is 1" from the sides or bottom edge, and 0.5" below the handle area. (Please conatct the art department for more information if needed).

If Special Placement is needed, please notate the measurements on the purchase order before we proof the order. Note that all measurements must be in 1/4" increments.

Some logos may look off-center due to Registration Mark and Trademarks. If placement needs to be based off the logo itself and not the full image, we need to know before proofing or production.

POST-PRINTING PROCESSES

Flexo-Ink Printing - Flexo-Ink is transparent, so any ink color will take on the color of the bag underneath.

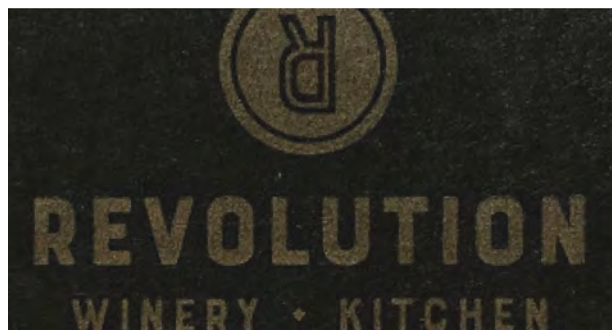
On kraft and tinted color bags, most ink colors will appear darker and may not look exactly like the PMS color requested. White ink, metallic inks, and light-colored inks always appear dull in color and may not be very visible or legible on any kraft or tinted paper shoppers.

Multi-color artwork may be adjusted to add space in-between colors to avoid inks mixing during printing, if mixing will cause issues.

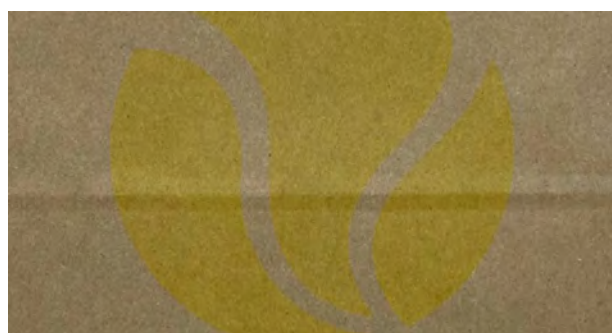
Inks are always laid lightest color first to darkest color last.



211 White Ink on Kraft Paper Shopper



200 Metallic Gold (PMS 871) Ink on Tinted Black Paper Shopper



277 Sunflower (PMS 121 U) Ink on Kraft Paper Shopper



4 colors of Flexo-Ink on White Paper Shopper



4 colors of Flexo-Ink on Kraft Paper Shopper

Hot Stamp Imprinting - Foil can have an uneven edge due to the product material itself (especially non-woven bags).

Foils may easily flake off if intentionally scratched. Thin lines or points may break off from the plate or even damage the product and may need to be adjusted by the art department.

Foil colors similar to, or the same color as the product, may not be visible or legible.

Matte foils have a higher chance for fill-in due to the higher temperature needed for adherence. Metallic foils are recommended for artwork that has smaller details, thin lines, or small text.

2-sided orders have more potential to crease the foil during the printing process. A smaller plate may need to be made to avoid the crease depending on the artwork.



113 Matte Navy foil on 8494MNV



119 Matte Black foil on 0810BLT-M

Insignia Artwork- Artwork may have to be adjusted or reduced in size to fit within printing area of the bag size due to glue or ink overlap.

Any artwork overlapping above the serrated edge may appear on the bottom of the bag. The bottom gusset logo may be updated to have your company's logo if desired. However, we will always put "Made in USA by PSI" underneath as it is required for compliance with various bag labeling laws and ordinances that mandate manufacturer identification.

Insignia orders use Water based ink, but Solvent ink may be used only if deemed necessary by Packaging Solutions.

On Kraft paper, most ink colors might appear darker and may not look exactly like the PMS color requested, although it should be close.

White ink and light-colored inks may appear dull in color and may not be very visible or legible. Multicolor artwork may be adjusted to add space to help with registration alignment if inks mix during printing, so if mixing will cause issues, space may be added between colors. Inks are always laid lightest color first to darkest color last.

Application of varnish is at the sole discretion of Packaging Solutions and will be determined based on artwork requirements. The addition or removal of varnish may alter the appearance of ink colors and result in color variance.

Each color might shift in any direction 1/16th of an inch to 1/8th of an inch.



ABOUT US

This year marks a major milestone in our company as we celebrate **30 years** of innovation, growth, and achievements! Founded in 1996, Packaging Solutions Inc. began with a simple mission: to deliver **Quality** products through **Style** and excellent customer **Service**.

Over the past three decades, we've grown from an operation with 2 foil hot stamping machines to a full-service post printing facility and most recently, a manufacturer of paper shopping bags & hot coffee cups, serving clients across the USA. Markets shift. Trends evolve. But our mission remains the same: to be your trusted packaging partner through good times and challenging ones.

We're excited for what's ahead, and even more excited to take the journey with you. Our dedicated team is always ready to help you so please give us a call, send us an email or if you're in town come and visit our facilities in Carrollton, Texas!

