

Karat[®]
BY LOLLICUP[™]

2025—2026
**ECO-FRIENDLY
PRODUCT CATALOG**



FROM OUR COMPANY TO YOURS

Dear valued customers,

At Karat® by Lollicup™, our goal is to offer a wide selection of premium foodservice products that will work for your individual business operations. As a foodservice manufacturer and distributor, we understand how important **quality, affordability, and dependability** are to operate a business. We strive to ensure that our products and services help you maintain an innovative establishment and to provide you with the tools you need to grow. As you flourish, we will be right there with you!

Our core values:

Quality

Karat® by Lollicup™ is committed to providing high quality premium products to suit our customers' unique needs, while continually working to expand our product offerings. Browse through our selection of product lines to find everything you need to keep your business running smoothly.

Affordability

We offer competitive prices to meet your operational needs. Whether it is for a new or established business, we will find the best solutions for your budget. Enjoy flexible shipping options on multiple products without the need to purchase in bulk. Choose your preferred shipping method and warehouse location or take advantage of our will call and pick-up options.

Dependability

Customer satisfaction is our top priority. We take great pride in providing excellent customer service before your order is placed through the time you receive it. We are here to help you with any special request, upcoming event, or any questions you may have.

We hope you find this material informative and our selection advantageous to your needs. Should you require specialty items or additional assistance, do not hesitate to give us a call.

Our best regards,

All of us at Karat® by Lollicup™

ABOUT US

Karat® by Lollicup™ began its legacy in 2000, when entrepreneurs Alan Yu and Marvin Cheng opened the very first Lollicup boba shop in San Gabriel, California. Today, the company is a rapidly growing manufacturer and distributor of premium beverage and foodservice products. Karat by Lollicup is also the parent company to four brands: Karat®, Karat Earth®, Tea Zone® and Total Clean®. These brands highlight innovative new products that stay on trend and offer cost-effective high-quality foodservice products for small and large businesses across the United States.

We focus on business-to-business growth by cultivating established partnerships among industry leaders while providing exceptional support for all our customers. Karat® by Lollicup™ headquarters are located in Chino, California with additional locations in Texas, Washington, South Carolina, New Jersey, Illinois, and Hawaii to allow for quick and efficient service nationwide and beyond. Karat® by Lollicup™ operates on customer satisfaction and always strives for excellence.



A Quick Reference

Please refer to the icon chart below to aid in your browsing.



IDEAL FOR
HOT DRINKS



IDEAL FOR
HOT FOODS



IDEAL FOR
COLD FOODS
/DRINKS



MICROWAVE
SAFE



DO NOT
MICROWAVE



CUSTOM
PRINTING
AVAILABLE

Material Resin ID Codes



PP



OTHER

Certifications



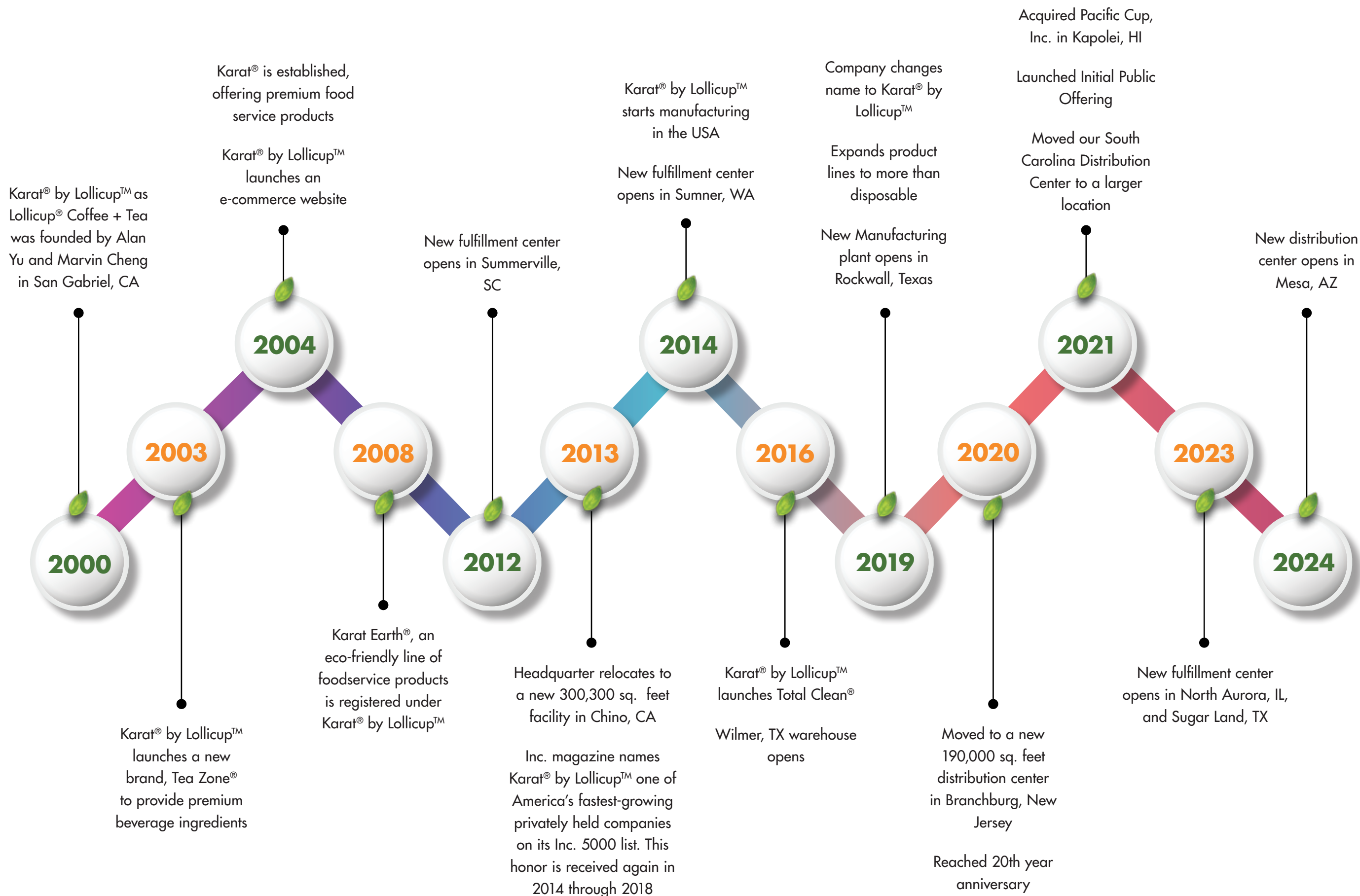
BPI CERTIFIED
COMPOSTABLE
PRODUCT



FORESTRY
INITIATIVE CERTIFIED
PRODUCT

- PLA POLYLACTIC ACID
- CPLA CRYSTALLIZED POLY LACTIC ACID

TIMELINE



DISTRIBUTION LOCATIONS

WASHINGTON
PUYALLUP





Compostable and Eco-Friendly Food
Service Disposables



6 WHAT IS PLA (POLYLACTIDE)

COLD CUPS & LIDS

- 7 ECO-FRIENDLY PLA CUPS & LIDS
- 9 ECO-FRIENDLY PAPER COLD CUPS & LIDS

HOT CUPS & LIDS

- 10 ECO-FRIENDLY PAPER HOT CUPS & LIDS

STIRRERS & STRAWS

- 12 ECO-FRIENDLY STIRRERS
- 13 ECO-FRIENDLY PAPER & PLA STRAWS

TO-GO PACKAGING

- 15 ECO-FRIENDLY PAPER SCOOP CUPS
- 16 ECO-FRIENDLY PAPER FOOD CONTAINERS & LIDS
- 18 BAMBOO FOOD TRAY
- 19 ECO-FRIENDLY PLA HINGED CONTAINERS
- 20 ECO-FRIENDLY PLA SALAD CONTAINERS & LIDS
- 21 MINERAL FILLED PP MEAT TRAYS & PLATES
- 22 MINERAL FILLED PP HINGED CONTAINERS
- 23 ECO-FRIENDLY PLA ROUND DELI CONTAINERS & LIDS
- 24 ECO-FRIENDLY PORTION CUPS & LIDS
- 25 BAGASSE HINGED CONTAINERS

- 27 BAGASSE PLATES
- 28 BAGASSE BOWLS & LIDS
- 30 BAGASSE TRAYS & LIDS

CATERING SUPPLIES

- 32 BAMBOO SKEWERS & PICKS

UTENSILS

- 33 ECO-FRIENDLY UTENSILS


WHAT IS PLA (POLYLACTIDE)?

Polylactic acid (PLA) is a thermoplastic derived from renewable resources. Common renewable resources used include corn starch, tapioca roots, or sugarcane. PLA is compostable where facilities exist.


INGEO™ PLA ATTRIBUTES

- APPEARANCE** - Excellent gloss, transparency, and clarity for cups and containers
- VERSATILITY** - Easy to shape, mold, emboss and print, allowing endless branding opportunities
- FOOD PRESERVATION** - Provides exceptional barrier to keep flavors tasting fresh
- BPA FREE** - Derived from all natural resources and free of the harmful chemical Bisphenol (BPA)


FACTS & ADVANTAGES OF PLA

**60% LESS**

non-renewable energy used

**80% LESS**

greenhouse gases

**100%**

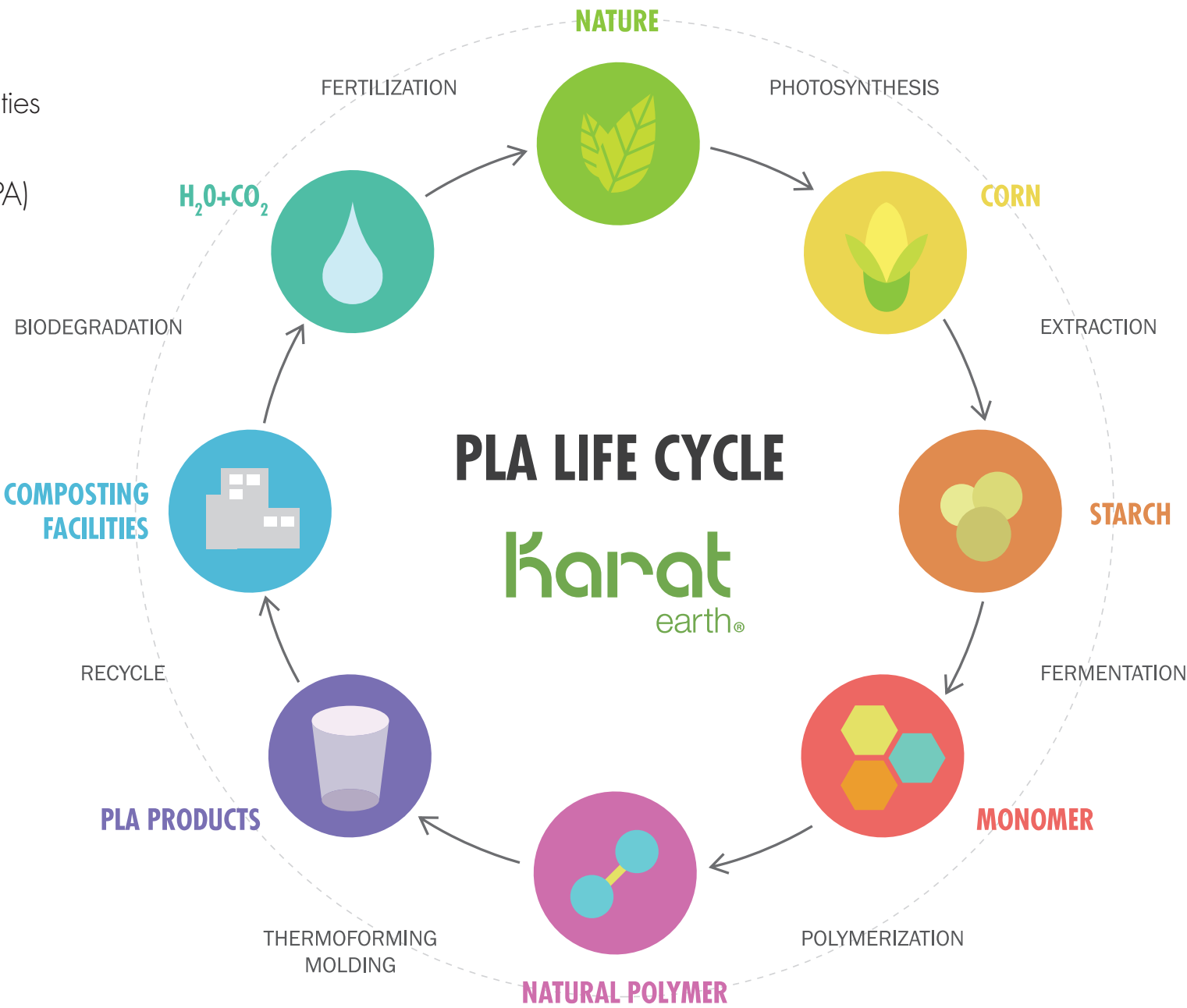
renewable resources (not oil)



MAKE THE SWITCH!

Karat® Earth PLA products are made with NatureWorks® Ingeo™ PLA. Ingeo is a biopolymer that is manufactured using plant sugars from field corn and from any sugar source. Ingeo is not petroleum-based, so it is nonvolatile and odorless if incinerated. Make the choice today, for a better tomorrow.

SELECT PRODUCTS HAVE CERTIFICATIONS BELOW:



ECO-FRIENDLY PLA CUPS & LIDS

Make the world a greener place by switching to Karat Earth® PLA disposables. Karat Earth uses only NatureWorks® Ingeo™ PLA plastic derived from renewable resources. Karat Earth PLA cups and lids are available in standard cup and lid sizes, making them an easy alternative. Karat Earth PLA products are compostable in commercial facilities.

✓ Key Features

- Made from renewable resources
- Select items are BPI® and/or Cedar Grove® certified
- Durable and shatter-proof
- Compostable in commercial facilities
- Clear and stock print design
- Custom printing available

PLA COLD CUPS



SIZE	RIM DIA. (mm)	CASE QTY	ITEM NO.
3 oz	62	2500/case	KE-KC3*
10 oz	78	1000/case	KE-KC10
12 oz	98	1000/case	KE-KC12
16 oz	98	1000/case	KE-KC16
20 oz	98	1000/case	KE-KC20
24 oz	98	600/case	KE-KC24
32 oz	107	300/case	KE-KC32

*NOT BPI® or Cedar Grove® certified.

PLA COLD CUPS
Stock Print “ONE EARTH”



SIZE	RIM DIA. (mm)	CASE QTY	ITEM NO.
9 oz	92	1000/case	KE-KC9G
10 oz	78	1000/case	KE-KC10G
12 oz	98	1000/case	KE-KC12G
16 oz	98	1000/case	KE-KC16G
20 oz	98	1000/case	KE-KC20G
24 oz	98	600/case	KE-KC24G

PLA FLAT LIDS for PLA COLD CUPS



DIA. (mm)	FITS (oz)	CASE QTY	ITEM NO.
78	10	1000/case	KE-KC78TS
98	12 - 24	1000/case	KE-KC626TS
98	12 - 24	1000/case	KE-KC626TS-NH*
107	32	500/case	KE-KC107TS

*No Hole

PLA FLAT LIDS for PLA COLD CUPS
“GREEN”



DIA. (mm)	FITS (oz)	CASE QTY	ITEM NO.
98	12 - 24	1000/case	KE-KC626TS-G
107	32	500/case	KE-KC107TS-G

ECO-FRIENDLY PLA CUPS & LIDS

PLA STRAWLESS SIPPER LIDS
for PLA COLD CUPS



DIA. (mm)	FITS (oz)	CASE QTY	ITEM NO.
98	12 - 24	1000/case	KE-KC626TS-SHNE

PLA DOME LIDS WIDE OPENING
for PLA COLD CUPS



DIA. (mm)	FITS (oz)	CASE QTY	ITEM NO.
98	12 - 24	1000/case	KE-KDL626-WH

PLA DOME LIDS for PLA COLD CUPS



DIA. (mm)	FITS (oz)	CASE QTY	ITEM NO.
78	10	1000/case	KE-KDL78
98	12 - 24	1000/case	KE-KDL626
98	12 - 24	1000/case	KE-KDL626-NH*

*No Hole

PLA DOME LIDS for PLA COLD CUPS
"GREEN"



DIA. (mm)	FITS (oz)	CASE QTY	ITEM NO.
98	12 - 24	1000/case	KE-KDL626-G

ECO-FRIENDLY PAPER COLD CUPS & LIDS

Karat Earth® eco-friendly paper cold cups are lined with PLA on the interior and exterior to keep your beverages cold and protected against condensation. Karat Earth cold cups are perfect for fountain drinks, smoothies and more. They feature our “One Earth” stock print, and are available in 16 oz., 22 oz. and 32 oz. with matching lids.

✓ Key Features

- Made from renewable resources
- Select items are BPI® and/or Cedar Grove® certified
- PLA lined
- Stock design prints
- Compostable in commercial facilities
- Custom printing available

ECO-FRIENDLY PAPER COLD CUPS Stock Print “ONE EARTH”



SIZE	RIM DIA. (mm)	CASE QTY	ITEM NO.
12 oz	90	1000/case	KE-KCP12
16 oz	90	1000/case	KE-KCP16
22 oz	90	1000/case	KE-KCP22
32 oz	104.5	600/case	KE-KCP32

PLA FLAT LIDS for PAPER COLD CUPS



DIA. (mm)	FITS (oz)	CASE QTY	ITEM NO.
90	12 - 22	1000/case	KE-KCL90
104.5	32	600/case	KE-KCL1045
115	44	480/case	KE-KCL115

PLA FLAT LIDS for PAPER COLD CUPS “GREEN”



DIA. (mm)	FITS (oz)	CASE QTY	ITEM NO.
104.5	32	600/case	KE-KCL1045-G

COMPOSTABLE FIBER PAPER FLAT LIDS for PAPER COLD CUPS



DIA. (mm)	FITS (oz)	CASE QTY	ITEM NO.
90	12 - 22	1000/case	KE-KCL90-PPRW
104.5	32	600/case	KE-KCL1045-PPRW

ECO-FRIENDLY PAPER HOT CUPS & LIDS

Karat Earth® eco-friendly paper hot cups are perfect for any hot beverage, including coffee and tea. These cups are available in white or “One Earth” stock print. We have an assortment of sizes ranging from 4 oz. to 20 oz. so you can find the size that is perfect for your needs.

✓ Key Features

- Made from renewable resources
- Select items are BPI® and/or Cedar Grove® certified
- Compostable in commercial facilities
- Stock print design available
- Custom printing available

ECO-FRIENDLY PAPER HOT CUPS “WHITE”



SIZE	RIM DIA. (mm)	CASE QTY	ITEM NO.
4 oz	62	1000/case	KE-K504W
8 oz	80	1000/case	KE-K508W
12 oz	90	1000/case	KE-K512W
16 oz	90	1000/case	KE-K516W
20 oz	90	600/case	KE-K520W

ECO-FRIENDLY PAPER HOT CUPS Stock Print “ONE EARTH”



SIZE	RIM DIA. (mm)	CASE QTY	ITEM NO.
8 oz	80	1000/case	KE-K508
10 oz	90	1000/case	KE-K510
12 oz	90	1000/case	KE-K512
16 oz	90	1000/case	KE-K516
20 oz	90	600/case	KE-K520
24 oz	90	500/case	KE-K524

ECO-FRIENDLY PAPER INSULATED HOT CUPS Stock Print “ONE EARTH”



SIZE	RIM DIA. (mm)	CASE QTY	ITEM NO.
8 oz	80	500/case	KE-KIC508
12 oz	90	500/case	KE-KIC512
16 oz	90	500/case	KE-KIC516

PLA SIPPER DOME LIDS for PAPER HOT CUPS



DIA. (mm)	FITS (oz)	CASE QTY	ITEM NO.
80	8	1000/case	KE-KDL508
90	10 - 24	1000/case	KE-KDL516

BAGASSE SIPPER DOME LIDS for
PAPER HOT CUPS “PFAS FREE”



DIA. (mm)	FITS (oz)	COLOR	CASE QTY	ITEM NO.
80	8	Natural	500/case	KE-BDL508N
90	10 - 24	Natural	500/case	KE-BDL516N
80	8	White	500/case	KE-BDL508W
90	10 - 24	White	500/case	KE-BDL516W

ECO-FRIENDLY STIRRERS

Mix up your favorite, crafted beverages with our Karat Earth® Wooden Stirrers. Each stirrer is made from high-quality wood, a renewable resource that many eco-conscious customers would appreciate. Simply add all your favorite ingredients to your drink and stir!

✓ Key Features

- Made from wood, a renewable resource
- Easy to use
- Unwrapped and paper-wrapped available

WOODEN STIR STICKS “COFFEE SUPPLIES”



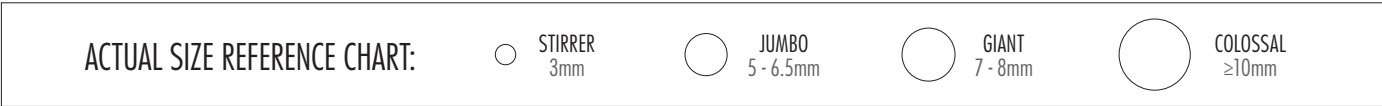
LENGTH (in)	WRAPPER	CASE QTY	ITEM NO.
5.5"	-	5000 (10x500)	KE-C9900
7.5"	-	5000 (10x500)	KE-C9905
5.5"	Paper	5000 (10x500)	KE-C9950
7.5"	Paper	5000 (10x500)	KE-C9955

ECO-FRIENDLY PAPER & PLA STRAWS

Karat Earth® offers a variety of PLA and Paper straws in different lengths and sizes to sip from any cup or beverage. PLA is a renewable resource that can be composted back into the environment. In an effort to be more eco-friendly Karat Earth straws are an eco-friendly alternative to standard plastic straws.

✓ Key Features

- Made from renewable resources
- Compostable in commercial facilities
- Variety of sizes and lengths available



ECO-FRIENDLY PAPER STRAWS



LENGTH (in)	SIZE	WRAPPER	COLOR(S)	CASE QTY	ITEM NO.
5.25"	Stir	-	White	5000 (10x500) pcs/case	KE-C9450W
5.25"	Stir	-	Red/White Spiral	5000 (10x500) pcs/case	KE-C9452
7.75"	Jumbo	Paper	White	2000 (4x500) pcs/case	KE-C9300W
10.25"	Jumbo	Paper	White	1200 (4x300) pcs/case	KE-C9305W
9"	Jumbo	Paper	White	1200 (4x300) pcs/case	KE-C9320W
7.75"	Giant	Paper	White	2000 (4x500) pcs/case	KE-C9330W
9"	Giant	Paper	White	1200 (4x300) pcs/case	KE-C9340W
9"	Giant	Paper	Red/White Spiral	1200 (4x300) pcs/case	KE-C9343
10.25"	Giant	Paper	White	1200 (4x300) pcs/case	KE-C9335W
10.25"	Giant	Paper	Blue/White Spiral	1200 (4x300) pcs/case	KE-C9337
10.25"	Giant	Paper	Red/White Spiral	1200 (4x300) pcs/case	KE-C9338
9"	Colossal	Paper	White	1600 (40x40) pcs/case	KE-C9350W

ECO-FRIENDLY PAPER STRAWS "KRAFT"



LENGTH (in)	SIZE	WRAPPER	COLOR(S)	CASE QTY	ITEM NO.
7.75 "	Jumbo	Paper	Kraft	2000 (4x500) pcs/case	KE-C9300K
10.25 "	Jumbo	Paper	Kraft	1200 (4x300) pcs/case	KE-C9305K
7.75 "	Giant	Paper	Kraft	2000 (4x500) pcs/case	KE-C9330K

ECO-FRIENDLY PLA STRAWS



LENGTH (in)	SIZE	WRAPPER	COLOR(S)	CASE QTY	ITEM NO.
7.75 "	Jumbo	Paper	Clear	2000 (4x500) pcs/case	KE-C9210
7.75 "	Jumbo	-	Clear	2000 (4x500) pcs/case	KE-C9215
9.5 "	Jumbo	Paper	Clear	4800 (16x300) pcs/case	KE-C9200
9.5 "	Jumbo	Paper	Green	4800 (16x300) pcs/case	KE-C9200 (Green)
9.5 "	Jumbo	Paper	Red	4800 (16x300) pcs/case	KE-C9200 (Red)
8.75"	Giant	Paper	Clear	2500 (5x500) pcs/case	KE-C9230
8.75"	Giant	Paper	Green	2500 (5x500) pcs/case	KE-C9230 (Green)
10.25"	Giant	Paper	Clear	1200 (4x300) pcs/case	KE-C9235
7.75 "	Giant	Paper	Clear	2000 (4x500) pcs/case	KE-C9240
9"	Colossal	Paper	Clear	1600 (16x100) pcs/case	KE-C9260
9"	Giant	Paper	Black	2500 (5x500) pcs/case	KE-C9230 (Black)

ECO-FRIENDLY
BAMBOO FIBER STRAWS



LENGTH (in)	CUT	SIZE	WRAPPER	COLOR(S)	CASE QTY	ITEM NO.
9 "	Diagonal	Jumbo	Paper	Natural	4000 (20x200) pcs/case	KE-C9800
9 "	Diagonal	Giant	Paper	Natural	3000 (20x150) pcs/case	KE-C9830
9 "	Diagonal	Colossal	Paper	Natural	1600 (20x80) pcs/case	KE-C9850
9 "	Flat	Jumbo	Paper	Natural	4000 (20x200) pcs/case	KE-C9801
9 "	Flat	Giant	Paper	Natural	3000 (20x150) pcs/case	KE-C9831
5.5"	Flat	Cocktail Straw	Paper	Natural	7000 (28x250) pcs/case	KE-C9875

ECO-FRIENDLY PAPER SCOOP CUPS

Karat Earth® Eco-Friendly Paper Scoop Cup is a perfect way to serve various finger foods such as fries, mozzarella sticks, and onion rings. The round shape and wide opening make serving and carrying accessible for both staff and consumers. This 5.5 oz scoop is ideal for all your snack needs. Not only is this paper scoop convenient, but it's also environmentally friendly resulting in less waste.

✓ Key Features

- Made from renewable and compostable resources
- 100% compostable in commercial facilities
- BPI® Certified

ECO-FRIENDLY PAPER SCOOP CUP “GENERIC ONE EARTH PRINT”



SIZE	CASE QTY	ITEM NO.
5.5 oz	1000/case	KE-PSC550

ECO-FRIENDLY PAPER FOOD CONTAINERS & LIDS

Karat Earth® eco-friendly food containers are made from renewable resources and feature an interior PLA lining to help protect against condensation and heat. These containers are designed to hold hot or cold foods and are perfect for side dishes, pastas, ice cream and more! Choose between white or our “One Earth” stock print.

✓ Key Features

- Made from renewable resources
- BPI® and/or Cedar Grove® certified
- Compostable in commercial facilities
- PLA lined
- Used with hot and cold food

ECO-FRIENDLY PAPER FOOD CONTAINERS “WHITE”



SIZE	RIM DIA. (mm)	CASE QTY	ITEM NO.
4 oz	75.3	1000/case	KE-KDP4W
6 oz	90.8	1000/case	KE-KDP6W
8 oz	90.8	1000/case	KE-KDP8W
10 oz	90.8	1000/case	KE-KDP10W
12 oz	114.6	500/case	KE-KDP12W
16 oz	114.6	500/case	KE-KDP16W

ECO-FRIENDLY PAPER FOOD CONTAINERS “ONE EARTH”



SIZE	RIM DIA. (mm)	CASE QTY	ITEM NO.
4 oz	75.3	1000/case	KE-KDP4
6 oz	90.8	1000/case	KE-KDP6
8 oz	90.8	1000/case	KE-KDP8
10 oz	90.8	1000/case	KE-KDP10
12 oz	114.6	500/case	KE-KDP12
16 oz	114.6	500/case	KE-KDP16
20 oz	126	600/case	KE-KDP20
24 oz	140.6	600/case	KE-KDP24
32 oz	140.5	600/case	KE-KDP32

ECO-FRIENDLY GOURMET PAPER FOOD CONTAINERS “GENERIC”



SIZE	RIM DIA. (mm)	CASE QTY	ITEM NO.
24 oz	114.6	1000/case	KE-GFC24*
32 oz	114.6	1000/case	KE-GFC32*

*Can be used with PLA Food Container lids (KE-KDL114) & Compostable Fiber Paper Flat Lid (KE-KDL115-PPRW)

ECO-FRIENDLY PAPER FOOD CONTAINERS & LIDS

PLA LIDS for PAPER FOOD CONTAINERS



DIA. (mm)	FITS (oz)	CASE QTY	ITEM NO.
90	4	1000/case	KE-KDL75
90.8	8	1000/case	KE-KDL90
114.6	12 - 16 24 - 32*	500/case	KE-KDL114

*Can be used with Gourmet Paper Food Container (KE-GFC24 & KE-GFC32)

COMPOSTABLE FIBER PAPER FLAT LIDS & ECO-FRIENDLY PAPER COLD/HOT FOOD CONTAINER



DIA. (mm)	FITS (oz)	CASE QTY	ITEM NO.
127	20	600/case	KE-KDL127-PPRW
142	24 - 32	600/case	KE-KDL142-PPRW

COMPOSTABLE FIBER PAPER FLAT LIDS & ECO-FRIENDLY PAPER FOOD CONTAINERS



DIA. (mm)	FITS (oz)	CASE QTY	ITEM NO.
75.3	6-10	1000/case	KE-KDL90-PPRW
114.6	12 - 16 24 - 32*	500/case	KE-KDL115-PPRW

*Can be used with Gourmet Paper Food Container (KE-GFC24 & KE-GFC32)

BAMBOO FOOD TRAYS

Karat Earth® Bamboo Food Trays are perfect for appetizers, finger foods, snacks, and side dishes. These trays are also recyclable and compostable in commercial facilities. Available in various sizes for an eco-friendly solution to all food service needs.

✓ Key Features

- Compostable in commercial facilities
- Various sizes available

BAMBOO FOOD TRAY "ONE EARTH"



SIZE	CASE QTY	ITEM NO.
4.7" x 3.2" x 1.2"	1000/case	KE-FT050N
5" x 3.7" x 1.5"	1000/case	KE-FT100N
6" x 4" x 1.5"	1000/case	KE-FT200N
6.7" x 4.7" x 1.7"	500/case	KE-FT250N
7.5" x 5" x 2"	500/case	KE-FT300N
8.5" x 5.8" x 2"	500/case	KE-FT500N

ECO-FRIENDLY PLA HINGED CONTAINERS

Karat Earth® PLA hinged containers will secure your to-go orders and help make a positive impact on the environment. These eco-friendly hinged containers are made out of PLA which is a renewable resource that can be composted back into the earth. Karat Earth hinged containers are available in multiple sizes allowing customers to take any meal to-go. Karat Earth hinged containers are available in multiple sizes allowing customers to take any meal to-go.

✓ Key Features

- One compartment
- Made from renewable resources
- One compartment

PLA HINGED CONTAINERS



SIZE	CASE QTY	ITEM NO.
6" x 6"	500/case	KE-HC66PLA-1C
8" x 8"	250/case	KE-HC88PLA-1C
9" x 5"	250/case	KE-HC95PLA-1C
9" x 9"	200/case	KE-HC99PLA-1C

PLA HINGED CONTAINERS
"GREEN"



SIZE	CASE QTY	ITEM NO.
6" x 6"	500/case	KE-HC66PLA-1CG
8" x 8"	250/case	KE-HC88PLA-1CG
9" x 5"	250/case	KE-HC95PLA-1CG

PLA HINGED DELI CONTAINERS



SIZE	CASE QTY	ITEM NO.
8 oz	200/case	KE-HDC8
12 oz	200/case	KE-HDC12
16 oz	200/case	KE-HDC16
24 oz	200/case	KE-HDC24
32 oz	200/case	KE-HDC32

PLA HINGED DELI CONTAINERS
"GREEN"



SIZE	CASE QTY	ITEM NO.
8 oz	200/case	KE-HDC8-G
12 oz	200/case	KE-HDC12-G
16 oz	200/case	KE-HDC16-G
24 oz	200/case	KE-HDC24-G
32 oz	200/case	KE-HDC32-G

ECO-FRIENDLY PLA SALAD CONTAINERS & LIDS

Karat Earth® PLA salad containers offer an elegant and sustainable solution for serving food items, making them an ideal choice for a wide range of culinary presentations. Crafted from PLA (Polylactic acid), a biodegradable material based from renewable plant-based resources. The quality and style is not compromised, and are perfect for restaurants, catering events or takeout services. Available in a variety of sizes for different portion needs and also a matching lid option to ensure your food stays fresh and secure while on the go.

✓ Key Features

- Durable, high clarity plastic
- Multiple sizes available
- Freezer safe
- Stackable

PLA SALAD CONTAINERS



SIZE	CASE QTY	ITEM NO.
18 oz	300/case	KE-BR18-PLA
24 oz	300/case	KE-BR24-PLA
32 oz	300/case	KE-BR32-PLA
48 oz	300/case	KE-BR48-PLA

PLA SALAD CONTAINERS "GREEN"



SIZE	CASE QTY	ITEM NO.
18 oz	300/case	KE-BR18-PLA-G
24 oz	300/case	KE-BR24-PLA-G
32 oz	300/case	KE-BR32-PLA-G
48 oz	300/case	KE-BR48-PLA-G



PLA DOME LIDS FOR PLA SALAD CONTAINERS



DIA. (mm)	FITS (oz)	CASE QTY	ITEM NO.
175	18-48	300/case	KE-BRL175-PLA

PLA DOME LIDS FOR PLA SALAD CONTAINERS "GREEN"



DIA. (mm)	FITS (oz)	CASE QTY	ITEM NO.
175	18-48	300/case	KE-BRL175-PLA-G



MINERAL FILLED PP MEAT TRAYS & PLATES

Minimize your plastic footprint and maximize your takeout options with Karat Earth® Mineral Filled PP! Made with up to 50% mineral content, our microwave-safe, heat-resistant hinged containers feature secure click closures, stack for easy storage, and its soak-proof build ensures mess-free transport. Explore our versatile meat trays and black & white round plates (1 or 3 compartments) for even more presentation possibilities!

✓ Key Features

- Available in multiple sizes and styles
- Stackable, soak-resistant, and microwaveable
- Multi-functional options for varied presentations

MINERAL FILLED PP MEAT TRAYS



SIZE	COMPARTMENT	COLOR	CASE QTY	ITEM NO.
8.5" x 6"	1	White	500/case	KE-MT8506MFPP-W

MINERAL FILLED PP ROUND PLATES



SIZE	COMPARTMENT	COLOR	CASE QTY	ITEM NO.
9"	1	White	500/case	KE-PR09MFPP-1CW
10.25"	1	White	500/case	KE-PR1025MFPP-1CW
9"	1	Black	500/case	KE-PR09MFPP-1CB
10.25"	1	Black	500/case	KE-PR1025MFPP-1CB

MINERAL FILLED PP ROUND PLATES



SIZE	COMPARTMENT	COLOR	CASE QTY	ITEM NO.
9"	3	White	500/case	KE-PR09MFPP-3CW
10.25"	3	White	500/case	KE-PR1025MFPP-3CW
9"	3	Black	500/case	KE-PR09MFPP-3CB
10.25"	3	Black	500/case	KE-PR1025MFPP-3CB

MINERAL FILLED PP HINGED CONTAINERS

MINERAL FILLED PP HINGED CONTAINERS “WHITE”



SIZE	COMPARTMENT	CASE QTY	ITEM NO.
6"x 6"	1	400/case	KE-HC66MFPP-1CW
8"x 8"	1	200/case	KE-HC88MFPP-1CW
9"x 6"	1	250/case	KE-HC96MFPP-1CW
9"x 9"	1	120/case	KE-HC99MFPP-1CW
8"x 8"	3	200/case	KE-HC88MFPP-3CW
9"x 9"	3	120/case	KE-HC99MFPP-3CW

MINERAL FILLED PP HINGED CONTAINERS “BLACK”



SIZE	COMPARTMENT	CASE QTY	ITEM NO.
6"x 6"	1	400/case	KE-HC66MFPP-1CB
8"x 8"	1	200/case	KE-HC88MFPP-1CB
9"x 6"	1	250/case	KE-HC96MFPP-1CB
9"x 9"	1	120/case	KE-HC99MFPP-1CB
8"x 8"	3	200/case	KE-HC88MFPP-3CB
9"x 9"	3	120/case	KE-HC99MFPP-3CB

ECO-FRIENDLY PLA ROUND DELI CONTAINERS & LIDS

Karat Earth® compostable deli containers are made from PLA plastic, a renewable resource made from the starches of corn, sugarcane, cassava or beetroot plants. PLA plastic is clear allowing for easy visibility of contents and is durable and shatterproof. These containers have a temperature tolerance of 122°F (50°C) and are great for storing salads, noodles, or many other foods. PLA deli containers are a great eco-friendly option for your food packaging needs!

✓ Key Features

- Durable and shatterproof
- Made from renewable resources
- Compostable in commercial facilities

PLA ROUND DELI CONTAINERS



SIZE	RIM DIA. (mm)	CASE QTY	ITEM NO.
8 oz	117	500/case	KE-DC8-PLA
12 oz	117	500/case	KE-DC12-PLA
16 oz	117	500/case	KE-DC16-PLA
24 oz	117	500/case	KE-DC24-PLA
32 oz	117	500/case	KE-DC32-PLA
8-32 oz	117	500/case	KE-DCL117-PLA

ECO-FRIENDLY PORTION CUPS & LIDS

Karat Earth® Paper Paper Portion Cups offer a convenient way to carry sauces, sides, and salsas on-the-go, all while minimizing your ecological footprint. These cups are crafted from compostable, plant-based materials, making them an eco-friendly choice for packaging your favorite condiments and side dishes. To enhance their durability and resistance to grease, the cups are lined with PLA.

✓ Key Features

- Plant-Based Compostable Material
- Sustainable
- Grease-Resistant

PAPER PORTION CUPS



SIZE	RIM DIA. (mm)	CASE QTY	ITEM NO.
2 oz	62	2000/case	KE-P200-PPRW
4 oz	75	1000/case	KE-P400-PPRW

CPLA LIDS for PAPER PORTION CUPS



DIA. (mm)	FITS	CASE QTY	ITEM NO.
62	2 oz	2000/case	KE-KDL62
75.3	4 oz	1000/case	KE-KDL75

BAGASSE HINGED CONTAINERS

Karat Earth® Bagasse products are a sustainable and environmentally-friendly alternative to traditional products that contain PFAS. Made from leftover fibers from the sugar extraction process, bagasse is a durable material that can be used for all types of food packaging. Not only is it safe for your health, but it also helps to preserve the health of the planet.

✓ Key Features

- Eco-Friendly
- Compostable in commercial facilities
- Durable

BAGASSE HINGED CONTAINERS “PFAS FREE”



SIZE	COMPARTMENT	CASE QTY	ITEM NO.
6" x 6"	1	500/case	KE-BHC66-1CFF
8" x 8"	1	200/case	KE-BHC88-1CFF
9" x 6"	1	200/case	KE-BHC96-1CFF
9" x 9"	1	200/case	KE-BHC99-1CFF

BAGASSE HINGED CONTAINERS “PFAS FREE”



SIZE	COMPARTMENT	CASE QTY	ITEM NO.
9" x 6"	2	200/case	KE-BHC96-2CFF

BAGASSE HINGED CONTAINERS “PFAS FREE”



SIZE	COMPARTMENT	CASE QTY	ITEM NO.
8" x 8"	3	200/case	KE-BHC88-3CFF
9" x 9"	3	200/case	KE-BHC99-3CFF

BAGASSE HINGED CONTAINERS NATURAL “PFAS FREE”



SIZE	COMPARTMENT	CASE QTY	ITEM NO.
6" x 6"	1	500/case	KE-BHC66N-1CFF
8" x 8"	1	200/case	KE-BHC88N-1CFF
9" x 6"	1	200/case	KE-BHC96N-1CFF
9" x 9"	1	200/case	KE-BHC99N-1CFF

BAGASSE HINGED CONTAINERS NATURAL “PFAS FREE”



SIZE	COMPARTMENT	CASE QTY	ITEM NO.
9" x 6"	2	200/case	KE-BHC96N-2CFF

BAGASSE HINGED CONTAINERS

BAGASSE HINGED CONTAINERS NATURAL “PFAS FREE”



SIZE	COMPARTMENT	CASE QTY	ITEM NO.
8" x 8"	3	200/case	KE-BHC88N-3CFF
9" x 9"	3	200/case	KE-BHC99N-3CFF

BAGASSE PLATES

BAGASSE ROUND PLATES
NATURAL “PFAS FREE”



SIZE	COMPARTMENT	CASE QTY	ITEM NO.
6"	1	1000/case	KE-BPR06N-1CFF
7"	1	1000/case	KE-BPR07N-1CFF
9"	1	500/case	KE-BPR09N-1CFF
10"	1	500/case	KE-BPR10N-1CFF

BAGASSE ROUND PLATES
NATURAL “PFAS FREE”



SIZE	COMPARTMENT	CASE QTY	ITEM NO.
9"	3	500/case	KE-BPR09N-3CFF
10"	3	500/case	KE-BPR10N-3CFF

BAGASSE SQUARE PLATES
WHITE “PFAS FREE”



SIZE	COMPARTMENT	CASE QTY	ITEM NO.
6" x 6"	1	500/case	KE-BPS06-1CFF
8" x 8"	1	500/case	KE-BPS08-1CFF
10" x 10"	1	500/case	KE-BPS10-1CFF

BAGASSE BOWLS & LIDS

BAGASSE ROUND BOWLS
NATURAL “PFAS FREE”



SIZE	COMPARTMENT	CASE QTY	ITEM NO.
24 oz	1	500/case	KE-BBR24N-FF
28 oz	1	500/case	KE-BBR28N-FF
32 oz	1	500/case	KE-BBR32N-FF
40 oz	1	500/case	KE-BBR40N-FF

BAGASSE ROUND BOWL
WHITE “PFAS FREE”



SIZE	COMPARTMENT	CASE QTY	ITEM NO.
12 oz	1	1000/case	KE-BBR12-1CFF

BAGASSE ROUND RICE/SALAD
BOWL WHITE “PFAS FREE”



SIZE	COMPARTMENT	CASE QTY	ITEM NO.
8 oz	1	1000/case	KE-BRB08-FF
12 oz	1	1000/case	KE-BRB12-FF
16 oz	1	1000/case	KE-BRB16-FF
32 oz	1	500/case	KE-BRB32-FF

BAGASSE SQUARE BOWLS
NATURAL “PFAS FREE”



SIZE	COMPARTMENT	CASE QTY	ITEM NO.
24 oz	1	300/case	KE-BBS24N-FF
32 oz	1	300/case	KE-BBS32N-FF
48 oz	1	300/case	KE-BBS48N-FF

PET DOME LID for
BAGASSE SQUARE BOWLS



FITS	CASE QTY	ITEM NO.
24/32/48 Square Bowl	300/case	FP-KDL221-PET

BAGASSE BURRITO BOWL
“PFAS FREE”



SIZE	COMPARTMENT	CASE QTY	ITEM NO.
28 oz	1	300/case	KE-BBB28-FF

BAGASSE BOWLS & LIDS

PET DOME LIDS for BAGASSE BOWLS



FITS	CASE QTY	ITEM NO.
24/32/40 oz Natural Bowl	200/case	FP-KDL204-PET
24/32 oz Wide Bowl	200/case	FP-KDL211-PET
28 oz Burrito Bowl	300/case	FP-KDL1065-PET
32 oz Bagasse Rice/Salad Bowl	200/case	FP-KDL183-PET

BAGASSE TRAYS

BAGASSE TRAYS
WHITE “PFAS FREE”



SIZE	COMPARTMENT	CASE QTY	ITEM NO.
10" x 8"	5	100/case	KE-BT108-5CFF (100)
10" x 8"	5	400/case	KE-BT108-5CFF (400)

BAGASSE NACHO
TRAYS “PFAS FREE”



SIZE	COMPARTMENT	CASE QTY	ITEM NO.
7.5" x 6.5"	2	600/case	KE-BNT76-2CFF

COMPOSTABLE BAGASSE PLATES & LIDS

Karat Earth® bagasse containers and dinnerware are great for holding all of your delicious foods, including hot and cold items. The containers are made with bagasse, which consists of fibers left over from the sugar extraction process of sugarcane. These fibers are strong, durable, and a great source of sustainable material for food packaging. BPI® Certified hinged containers, plates, and bowls are all available!

✓ Key Features

- Made from renewable resources
- Durable, sturdy, and microwavable
- Select items are BPI® certified
- Compostable in commercial facilities
- Various sizes and designs available

COMPOSTABLE BAGASSE
ROUND PLATES "PFAS FREE"



SIZE	COMPARTMENT	CASE QTY	ITEM NO.
6"	1	1000/case	KE-BPR06-1CFF
7"	1	1000/case	KE-BPR07-1CFF
9"	1	500/case	KE-BPR09-1CFF
10"	1	500/case	KE-BPR10-1CFF

COMPOSTABLE BAGASSE
ROUND PLATES "PFAS FREE"



SIZE	COMPARTMENT	CASE QTY	ITEM NO.
9"	3	500/case	KE-BPR09-3CFF
10"	3	500/case	KE-BPR10-3CFF

COMPOSTABLE BAGASSE
OVAL PLATES



SIZE	COMPARTMENT	CASE QTY	ITEM NO.
10" x 8"	1	500/case	KE-BP0108-1CFF
12.5" x 10"	1	500/case	KE-BP012510-1CFF

PET DOME LIDS for
BAGASSE ROUND PLATES



SIZE	FITS	CASE QTY	ITEM NO.
9"	KE-BPR09-1CFF	200/case	FP-KDL228-PET

BAMBOO SKEWERS & PICKS

Karat Earth® Bamboo Skewers & Picks are made from natural bamboo material and come in a variety of styles and sizes. They are a kitchen essential that can be used to serve bite-sized appetizers, garnish a martini, create mini kebabs and much more! Match the style of your restaurant or event with a selection of rustic loops, lovely hearts, or natural minimalist.

BAMBOO SKEWERS “KNOT”



SIZE	CASE QTY	ITEM NO.
4"	5000/case	KE-U6014
7"	5000/case	KE-U6017

BAMBOO SKEWERS “HEART LOOPED”



SIZE	CASE QTY	ITEM NO.
6"	5000/case	KE-U6026

BAMBOO SKEWERS “PADDLE”



SIZE	CASE QTY	ITEM NO.
3.5"	5000/case	KE-U6033
6"	5000/case	KE-U6036

BAMBOO PICKS



SIZE	CASE QTY	ITEM NO.
3.5"	5000/case	KE-U6113
6"	5000/case	KE-U6116

ECO-FRIENDLY UTENSILS

Karat Earth® eco-friendly utensils are great for hot and cold foods and make a positive impact on our environment. Select from bio-based, PLA or CPLA materials that all provide a sturdy environmentally-friendly option when it comes to cutlery. PLA utensils are compostable in a commercial facility, while our bio-based spoons can be recycled at participating locations.

✓ Key Features

- Select items are BPI® certified
- Made from renewable resources
- Compostable in commercial facilities
- Various colors available

PLA UTENSILS
MEDIUM HEAVY WEIGHT



COLOR	TYPE	CASE QTY	ITEM NO.
Natural	Fork	100pcs/bag, 10bags/case	KE-U4200 (Natural)
Natural	Knife	100pcs/bag, 10bags/case	KE-U4201 (Natural)
Natural	Tea Spoon	100pcs/bag, 10bags/case	KE-U4203 (Natural)

*Not recommended for temperatures over 176°F

PLA UTENSILS
HEAVY WEIGHT



COLOR	TYPE	CASE QTY	ITEM NO.
Natural	Fork	100pcs/bag, 10bags/case	KE-U4510 (Natural)
Natural	Knife	100pcs/bag, 10bags/case	KE-U4511 (Natural)
Natural	Tea Spoon	100pcs/bag, 10bags/case	KE-U4513 (Natural)

*Not recommended for temperatures over 176°F

CPLA COMPOSTABLE UTENSILS
MEDIUM HEAVY WEIGHT “WRAPPED”



COLOR	TYPE	CASE QTY	ITEM NO.
White	Spork	750pcs/case	KE-U3205W

*Not recommended for temperatures over 176°F

CPLA COMPOSTABLE UTENSILS
HEAVY WEIGHT “WRAPPED”



COLOR	TYPE	CASE QTY	ITEM NO.
White	Fork	750pcs/case	KE-U3400W
White	Knife	750pcs/case	KE-U3401W
White	Tea Spoon	750pcs/case	KE-U3403W
White	Cutlery Kits	250 sets/case	KE-U3600W

*Not recommended for temperatures over 176°F

ECO-FRIENDLY UTENSILS

BIO-BASED NATURAL UTENSILS
HEAVY WEIGHT



COLOR	TYPE	CASE QTY	ITEM NO.
Natural	Fork	100pcs/bag, 10bags/case	KE-U2020
Natural	Knife	100pcs/bag, 10bags/case	KE-U2021
Natural	Soup Spoon	100pcs/bag, 10bags/case	KE-U2022
Natural	Tea Spoon	100pcs/bag, 10bags/case	KE-U2023

BIO-BASED NATURAL UTENSILS
HEAVY WEIGHT "WRAPPED"



COLOR	TYPE	CASE QTY	ITEM NO.
Natural	Fork	100pcs/bag, 10bags/case	KE-U2030
Natural	Knife	100pcs/bag, 10bags/case	KE-U2031
Natural	Tea Spoon	100pcs/bag, 10bags/case	KE-U2033

BIO-BASED UTENSILS
HEAVY WEIGHT "BLACK"



COLOR	TYPE	CASE QTY	ITEM NO.
Black	Fork	100pcs/bag, 10bags/case	KE-U2020B
Black	Knife	100pcs/bag, 10bags/case	KE-U2021B
Black	Soup Spoon	100pcs/bag, 10bags/case	KE-U2022B
Black	Tea Spoon	100pcs/bag, 10bags/case	KE-U2023B

BAGASSE UTENSILS
PAPER WRAPPED "PFAS FREE"



COLOR	TYPE	CASE QTY	ITEM NO.
Natural	Spoon	750pcs/case	KE-BU5023
Natural	Cutlery Kits	250 sets/case	KE-BU5100

BIO-BASED COLORED SPOONS
HEAVY WEIGHT



COLOR	TYPE	CASE QTY	ITEM NO.
Red	Spoon	100pcs/bag, 10bags/case	KE-U2300 (Red)
Orange	Spoon	100pcs/bag, 10bags/case	KE-U2300 (Orange)
Green	Spoon	100pcs/bag, 10bags/case	KE-U2300 (Green)
Teal Blue	Spoon	100pcs/bag, 10bags/case	KE-U2300 (Blue)
Lavender Purple	Spoon	100pcs/bag, 10bags/case	KE-U2300 (Purple)
Pink	Spoon	100pcs/bag, 10bags/case	KE-U2300 (Pink)
Mixed	Spoon	100pcs/bag, 10bags/case	KE-U2300 (Rainbow)*

*Not recommended for temperatures over 176°F

WOODEN UTENSILS
HEAVY WEIGHT



COLOR	TYPE	CASE QTY	ITEM NO.
Wood	Fork	100pcs/bag, 10bags/case	KE-U8000
Wood	Knife	100pcs/bag, 10bags/case	KE-U8001
Wood	Spoon	100pcs/bag, 10bags/case	KE-U8003
Wood	Tea Spoon	100pcs/bag, 40bags/case	KE-U8005



**NEED TO BRAND YOUR PRODUCTS?
WE'VE GOT YOU COVERED.**
YOUR CUSTOM PRINTING SOLUTIONS.



- 37** UNDERSTANDING THE DIFFERENT PRINTING METHODS & COLORS
- 38** CUSTOM PRINTING ARTWORK REQUIREMENTS



With fast turnaround times and high-quality printing, you can easily advertise your business by letting your brand be the next conversation starter. Customize all your foodservice products by printing your logo or a design on your paper cups, food containers, and more. Read the details below on our custom printing process and let us help you take your branding and marketing efforts to the next level!

💧 Understanding the Different Printing Methods & Colors

Offset Lithography

- » This is a standard printing process that uses water and/or oil to keep ink out of non printing areas on the plate.
- » The term offset comes from the fact that the ink design is transfered, or offset, onto something else before it goes onto the printed material.
- » Offset Lithography is for paper printing and can print both CMYK and Spot Colors.

VS

Flexography & Dry Offset

- » Flexography printing works very much like a typical rubber stamp.
- » Flexible plates are rolled in ink and then transfered onto the final piece.
- » This printing method can be used for paper, plastic, or any special substrates.
- » Flexography can only use spot colors.
- » Dry Offset works a lot like Flexography but the ink is transfered or onto another roller before it goes onto the final product.

CMYK Printing: (4 color process)

- » This term refers to a printing process that uses a mixture of Cyan, Magenta, Yellow, and Black (CMYK) to reproduce a wide range of colors.
- » A wide range of colors can be printed with just 4 color plates, so the number of colors allowable on each design is much higher.
- » PANTONE® (PMS) color codes can be provided as a final color reference, but not all PANTONE® (PMS) colors can be reproduced accurately.

VS

Spot Color Printing

- » This term refers to a printing process that uses pre-mixed ink for each color. This limits the number of colors but ensures greater color accuracy.
- » The industry standard for spot colors is the PANTONE® Matching System (PMS) and will be used for all spot colors.
- » Due to the use of food-grade inks, not all PANTONE® colors can be achieved.
- » PANTONE® colors will vary on finished products depending on the material and may vary across multiple materials.

CUSTOM PRINTING ARTWORK REQUIREMENTS

Software/File Formats & Requirements



.AI, .EPS, or .PDF (Preferred Formats)

- Shapes and fonts must be outlined
- Artwork elements must be in layers, not merged



Images (if any)

- All images embedded
- Images must be at least 300 dpi or higher
- Images can only be printed on paper products



All Text and Fonts

- Font size must be at least 8 pt
- Font files must be included with submission or outlined

Colors

- Define all colors CMYK or PANTONE® Solid Coated/Uncoated Color Code.

What if I don't have any of these?

If your artwork is designed in another program (e.g. Corel Draw), please save it as a high resolution PDF or EPS file.

What if I don't have any programs?

If there is no way to provide us with artwork, we can provide you with in-house design service. Please contact us for further details. Minimal design fees may be applicable. If there is no way to provide us with artwork, we can provide you with in-house design service. Please contact us for further details. Minimal design fees may be applicable.

Templates/Lines

Templates are available for all stock sizes as well as for custom sizes. Feel free to contact a sales representative for a template to get started or let our talented designers work for you.

Disclaimers

Artwork

Clients take full responsibility in obtaining the copyrights of the design(s) involved in their custom print order.

Color Accuracy

There is a much higher degree of color accuracy when PANTONE® Color codes are provided. When a PANTONE Color code is provided, finished products are expected to be within 2 PANTONE Colors, either up or down (refer to PANTONE Solid Coated or Uncoated color book). Due to food grade inks, not all PANTONE Color codes can be achieved, and any possible replacement is at the manufacturer's discretion.

Ink Odor

Custom printed products can have a lingering odor as a result of printing with food grade inks. A degree of ink odor should be expected in all custom printed products. Any replacement is at the manufacturer's discretion.

Plate Charges

New custom print orders will be subject to plate fees. Plate fees are charged per color, per item. Re-print orders will not be charged plate fees if the existing plates are still in good condition. Customers will be notified if new plates will be necessary for their re-print orders and subsequently billed for the new plates.

Minimum & Lead Times

All stated minimums apply for each size and/or design ordered. Minimums are subject to change at any time. Due to the nature of custom printed products, there may be a +/- 10% over/under run (variance between amount ordered and amount produced). Lead times are estimated and are not guaranteed.

Print Gap

For plastic cups, a small gap is left between the leading edge of the design so that the design does not overlap. For paper cups and food containers, normal printing procedure is to leave a white area around the bottom rim, as indicated on the template. Clients can make a special request to extend artwork to the bottom rim but this can result in the printed design cracking once the paper is folded. If this does occur, it will leave flakes inside the cups once they are stacked.

Karat[®]

BY LOLLICUP[™]

6185 Kimball Ave.
Chino, CA 91708
1.626.965.882

3201 Capital Blvd., Unit A
Rockwall, TX 75032
1.469.421.1400

91-312 B. Komohana St.
Kapolei, HI 96707
1.808.682.4221



WWW.KARATPACKAGING.COM

COPYRIGHT © 2025—2026 KARAT BY LOLLICUP. ALL RIGHTS RESERVED.

