



**LOGO MAT, SIGN MAT
& MESSAGE MAT
COLLECTION**

- WATERHOG IMPRESSIONS HD®
- WATERHOG® LOGO INLAY
- WATERHOG™ ECO ELITE ROLL GOODS LOGO
- BERBER ROLL GOODS LOGO
- LEGACY INLAY
- LEAGACY FASHION INLAY
- WATERHOG® SCULPTURES
- CLASSIC IMPRESSIONS™ HD CUSTOM SHAPE
- CLASSIC IMPRESSIONS™ HD LOGO
- GRAND IMPRESSIONS HD LOGO
- CLASSIC IMPRESSIONS™ LOGO
- SUPERSCAPE IMPRESSIONS™ LOGO



Waterhog Impressions HD with Classic Border



SCRAPER-WIPER/INDOOR-OUTDOOR

the andersen company

WATERHOG IMPRESSIONS HD®

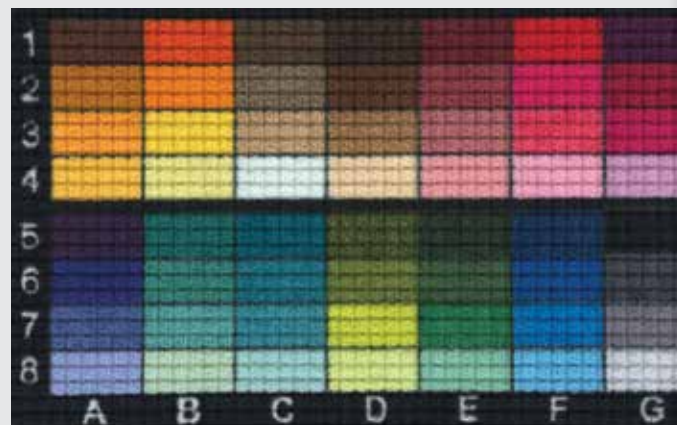
3/8" Classic (Rubber Border) Product No. 2381
3/8" Fashion (Fabric Border) Product No. 2380

- State-of-the-art digital printing system with up to 57 standard color options
- Bi-level surface effectively removes and stores dirt and moisture beneath shoe level until cleaning
- Rubber reinforced face nubs prevent pile from crushing, extending the performance life of the product
- Molded nitrile rubber backing resists curling and cracking in all types of weather. Available in smooth and cleated backing types
- Available with your choice of Classic Rubber border or Fashion Fabric border
- Perfect for high traffic areas
- No set up charge! Free proofs in 24 hrs!

SIZES

2' x 3' 4' x 6'
3' x 4' 4' x 8'
3' x 5' 6' x 8'
3' x 10' 6' x 10'
3' x 12' 6' x 12'
3' x 16' 6' x 16'
3' x 20' 6' x 20'

Sizes are approximate. See price list for all additional sizes.



Color options



Waterhog Logo Inlay red/black Classic border

the andersen company

WATERHOG® LOGO INLAY

3/8" Classic (rubber border) Product No. 234
3/8" Fashion (fabric border) Product No. 235

- 100% UV resistant polypropylene fabric for indoor and outdoor placements
- Molded rubber backing resists curling and cracking in all types of weather. Available in smooth and cleated backing types.
- Earth-friendly rubber backing has 20% post-consumer recycled content
- Designs are created using a unique inlay process that can include up to 19 colors per mat at no additional charge
- Available with your choice of Classic Rubber border or Fashion Fabric border
- **No set up charge! Free proofs in 24 hrs!**
- Perfect for high traffic areas

SIZES

2' x 3' 4' x 10'
3' x 4' 4' x 12'
3' x 5' 4' x 16'
3' x 10' 4' x 20'
3' x 12' 6' x 8'
3' x 16' 6' x 12'
3' x 20' 6' x 16'
4' x 6' 6' x 20'
4' x 8'

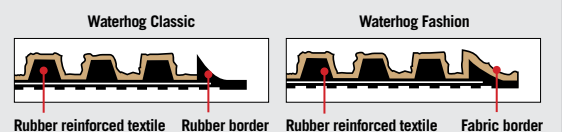
Sizes are approximate. See price list for all additional sizes.



ENTRANCE/SCRAPER-WIPER/INDOOR-OUTDOOR



Waterhog Logo Inlay red/black



Rubber reinforced textile Rubber border Rubber reinforced textile Fabric border



150 camel 151 medium brown 152 dark brown 153 light green* 154 charcoal 155 red/black 156 medium blue 157 medium grey 158 bluestone 159 evergreen



160 bordeaux 161 navy 162 white* 163 aquamarine* 164 gold* 165 solid red* 166 yellow* 167 orange* 168 purple*

*These colors are ONLY available in 3' and 4' widths.





Waterhog Eco Elite Logo
sothern pine

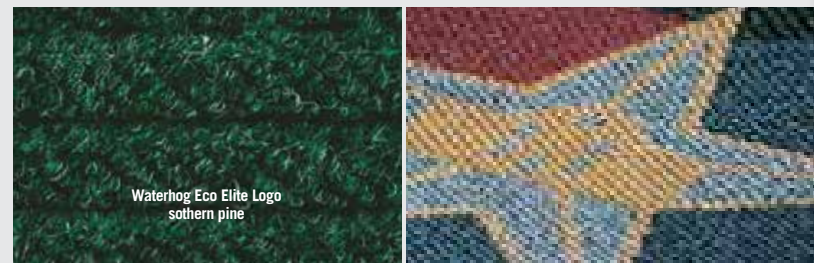
the andersen company

WATERHOG® ECO ELITE ROLL GOODS LOGO

3/8" Product No. 2268



ENTRANCE/SCRAPER-WIPER/
INDOOR-OUTDOOR



BACKGROUND COLORS

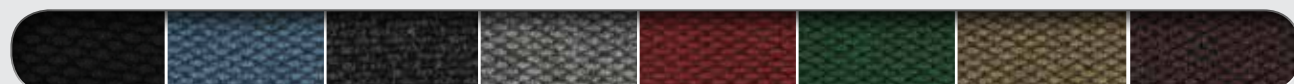


170 black smoke 171 indigo 172 southern pine 173 grey ash 174 maroon 175 chestnut brown 176 khaki 177 regal red

LOGO COLORS



gold dark brown bright red dark green orange dark blue purple light yellow white



solid black light blue charcoal grey solid red emerald green sand burgandy

- No set up charge! Free proofs in 24 hrs!

- 17 logo colors and 8 background colors to choose from

- Designed to be installed like carpeting or loose laid like mats

- Custom sizes over 6' wide are seamed together

- Custom sizes available with or without edging up to 12' x 50'

CUSTOM SIZES available in 3' to 12' widths in sizes up to 12' x 50'. See price list for additional information. Sizes are approximate.



Berber Roll Goods Logo
Black

the andersen company

BERBER ROLL GOODS LOGO

3/8" Product No. 2283



ENTRANCE/SCRAPER-WIPER/INDOOR-OUTDOOR

- Heavy needle punched fabric has 52 oz/sq yd face weight
- High performance rubber backing
- Polypropylene fabric is naturally stain resistant and easy to clean
- Solution dyed for excellent light & wet fastness
- 17 colors to choose from
- No setup charges
- Great for large entrance area installations and custom size applications

CUSTOM SIZES available in 3' to 12' widths in sizes up to 12' x 50'. See price list for additional information. Sizes are approximate.

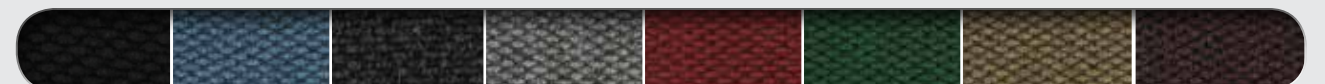
Widths over 6' will be seamed.



Berber Roll Goods Logo



gold dark brown bright red dark green orange dark blue purple light yellow white



solid black light blue charcoal grey solid red emerald green sand burgandy

100%
customer satisfaction
GUARANTEED

NFSI
HIGH-TRACTION



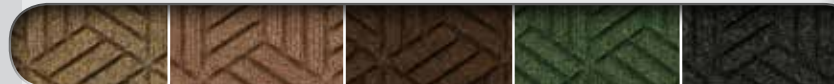
MADE
IN THE
USA

100%
customer satisfaction
GUARANTEED

MADE
IN THE
USA



Legacy Inlay charcoal



*These colors are ONLY available in 3' and 4' widths.

WATERHOG® SCULPTURES

3/8"	Classic Border	ProductNo. 355
3/8"	Fashion Border	ProductNo. 350

- 100% polypropylene fabric
- Earth-friendly rubber backing has 20% post-consumer recycled content. Resists curling and cracking.
- Solution dyed for excellent colorfastness
- Logo is permanently molded into the material and will not crush
- Affordable logo option when larger quantities of mats are required
- Perfect for home builders, real estate companies, apartment communities and large corporate accounts

SIZES
2' x 3'
3' x 4'
3' x 5'

Sizes are approximate.
Minimum Order Quantity on 1st Order: 100 units.
Order Quantity on 2nd Order of a Design: 1 unit



Waterhog Sculptures fashion border red/black



*These colors are ONLY available in 3' and 4' widths.

- Same features as Waterhog Logo and Logo Fashion Inlay (page 41), only with a unique geometric pattern
- Recommended for commercial buildings, hotels, restaurants, healthcare facilities, office buildings and more



SIZES
2' x 3'
3' x 4'
3' x 5'
3' x 8'
3' x 10'
3' x 12'
3' x 16'
3' x 20'
4' x 4'
4' x 6'
4' x 8'

Sizes are approximate.



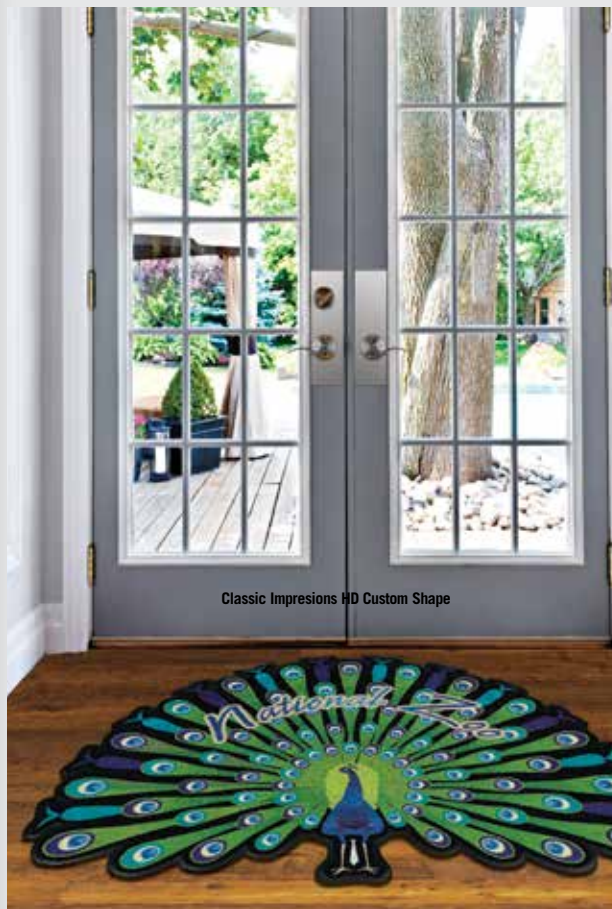
Classic Impressions HD Custom Shape

CLASSIC IMPRESSIONS™ HD CUSTOM SHAPE

3/8"	Product No. 733
------	-----------------

- Heavy 32 oz/sq yd high twist heat-set nylon face fabric
- Heavy 90 mil rubber backing for added support and durability
- Rubber backing contains 20% recycled rubber from car tires
- Logos are printed onto carpet face; fine details and 3-D images are achievable
- 4 color process provides unlimited color options. PMS color matching is available with an upcharge.
- No set up charges, art proofs returned in 24 hours and fast ship times
- Certified slip resistant by National Floor Safety Institute

23' maximum length.
3', 4', 5' widths available in cleated and smooth backing. 6' in smooth backing only.
See color chart on page 46 for color availability.
PMS custom color available at an additional charge.



Classic Impressions HD Custom Shape



Classic Impressions HD Custom Shape



Classic Impressions HD Logo



CLASSIC IMPRESSIONS™ HD LOGO

3/8" SBR rubber border and backing
3/8" vinyl border and backing

Product No. 73
Product No. 73

GRAND IMPRESSIONS™ HD LOGO

3/8" serged border, recycled crumb rubber backing

Product No. 64

- Heavy 32 oz/sq yd high twist, heat-set nylon face fabric
- SBR rubber backing contains 20% recycled rubber from car tires
- Logos are printed onto carpet face; fine details, shading and 3-D images are achievable utilizing a state-of-the-art digital printer
- 4-color process- 150 color options and photographic quality designs
- No set up charges, art proofs in 24 hours and fast ship times (3-5 business days)
- Available with cleated backing (3', 4' and 5' widths only) for placement on carpet or smooth backing for hard floor surfaces
- Certified slip resistant by National Floor Safety Institute
- Recommended for commercial buildings, hotels, restaurants, healthcare facilities, office buildings and more

SIZES

2' x 3'
3' x 4'
3' x 5'
3' x 10'
4' x 6'
4' x 8'
5' x 8'
5' x 10'
6' x 10'
6' x 12'

Sizes are approximate. See price list for all additional sizes. PMS custom color available at an additional charge.



Classic Impressions HD Logo



WIPER/INDOOR

CLASSIC IMPRESSIONS™ LOGO

3/8" SBR or vinyl backing

Product No. 70

- Long-wearing, 26 oz/sq yd, static-dissipative nylon carpet
- Earth-friendly rubber backing contains 20% post-consumer recycled content resists curling and cracking
- Available with cleated backing (3', 4' and 5' widths only) for placement on carpet or smooth backing for hard floor surfaces
- No set up charge! Fast Service!
- Recommended for commercial buildings, hotels, restaurants, health care facilities, office buildings and more
- Search over a million designs in our logo database at www.andersenco.com

SIZES

2' x 3'
3' x 4'
3' x 5'
3' x 10'
4' x 6'
4' x 8'
5' x 8'
5' x 10'
6' x 10'
6' x 12'

Sizes are approximate. See price list for all additional sizes. PMS custom color available at an additional charge.



WIPER/INDOOR



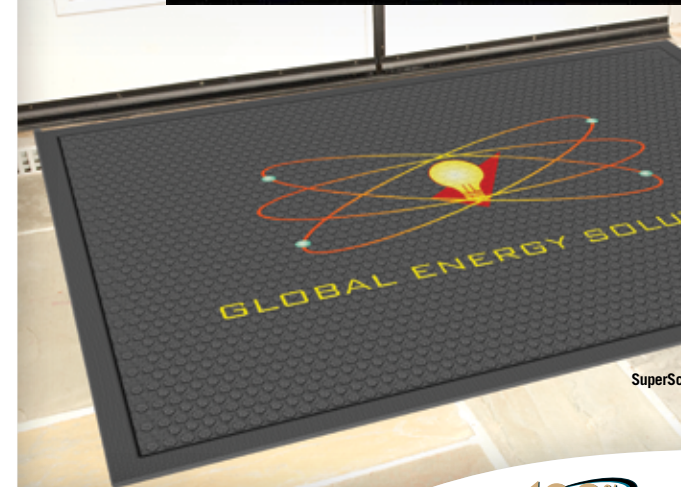
Classic Impressions forest green



401 black 402 white silver 403 royal blue 404 hot pink 405 moss green 406 red 407 purple 408 blush
409 rose 410 light blue 411 pearl white 413 sandalwood 414 turquoise 415 aquamarine 417 navy 418 silver
419 dark grey 421 emerald green 422 forest green 423 gold 425 yellow 426 suede 427 dark gold 429 orange 430 burgundy 431 chocolate



ENTRANCE/SCRAPER/INDOOR-OUTDOOR



SuperScape Impressions logo



SUPERSCAPE IMPRESSIONS™ LOGO

3/16" Product No. 3559

- SuperScape Impressions Logo Mats offer a superior printing surface for your company logo or promotional message
- Multi-color images are created by molding a digitally printed polymeric material into durable nitrile rubber
- These long-lasting logo mats perform beautifully in all types of environments
- The high-traction surface effectively removes and traps tough dirt, grime and water from shoes
- 150 color options available. Photo-realistic images, print ready artwork, tones and shades are all produced with unparalleled detail and clarity.
- SuperScape Impressions™ are perfect for any application where colorful logo mats or message mats are needed
- Resistant to oils and chemicals

SIZES

2.5' x 3'
3' x 4'
3' x 5'
3' x 10'
4' x 6'
4' x 8'
6' x 6'
6' x 8'

Sizes are approximate. PMS custom color available at an additional charge.

